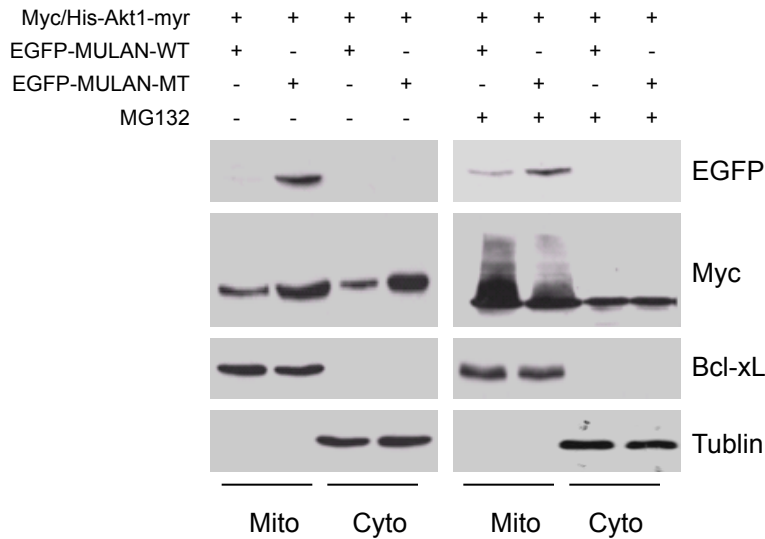
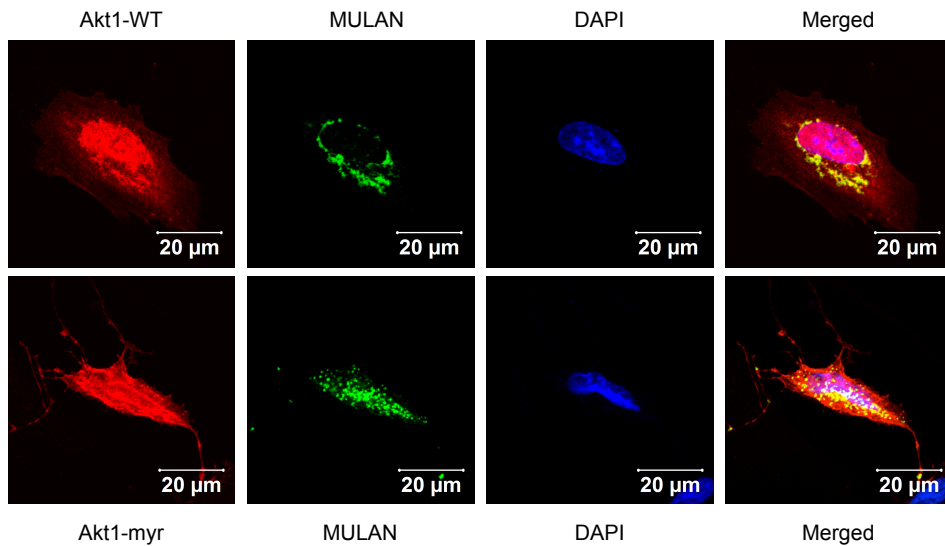


Supplementary Fig. S2

A



B



Supplementary information, Figure S2 MULAN induced Akt1 degradation and colocalized with Akt1 in mitochondria. (A) MULAN induced Akt1 degradation in both the cytosol and mitochondria. HeLa cells were cotransfected with the indicated plasmids, and cytosolic and mitochondrial fractionations were isolated. Immunoblots with the indicated antibodies determined the effects of Akt1 degradation by MULAN in the cytosolic and mitochondrial fractions. Tubulin and Bcl-xL were used as cytosolic and mitochondrial markers, respectively. (B) The colocalization of MULAN and Akt1-WT (top) and Akt1-myr (bottom) was investigated in HeLa cells. HeLa cells were cotransfected with the indicated plasmid, and the cells were incubated in the presence of MG132 (10 μ M) for 4 h, fixed, and visualized by confocal microscopy. DAPI staining was used to reveal nuclei. Abbreviation: cyto, cytosol; mito, mitochondria.