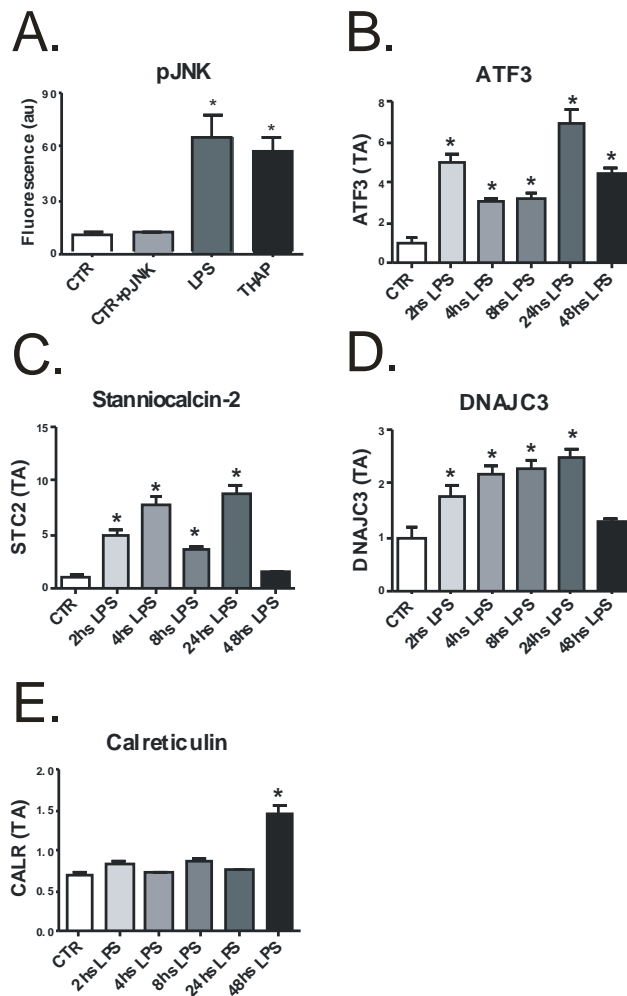


Supplementary Figure



Supplementary Figure 1. *LPS induces ERS in THP-1 cells.* In all experiments, cells were exposed to 0.5 $\mu\text{g/ml}$ LPS and harvested after 24h (A) or at times depicted in the panels (B-E). In A, the expression of pJNK, was evaluated by flow-cytometry. Controls were labeled or not with the specific antibodies, CTR+pJNK, or CTR, respectively. For the flow-cytometry evaluation some groups of cells were treated with thapsigargin (THAP). In B-E, real-time PCR was used to determine the expressions of ATF3 (B), stanniocalcin-2 (C), DNAJC3 (D) and calreticulin (E). In all experiments, $n = 6$. * $p < 0.05$ vs. CTR.