

FIGURE S1. *In vitro* SUMOylation of the E1. (A) SUMOylation of SAE2 is enhanced by Ubc9, and this enhancement is dependent on Ubc9's catalytic activity. (B) SUMOylation of E1 *in vitro* does not show paralogue specificity.

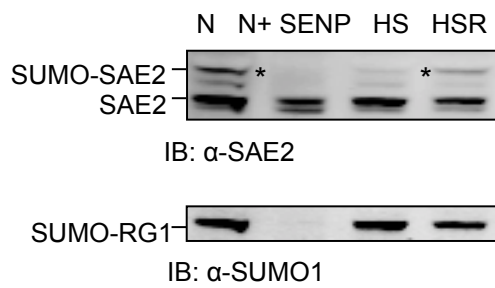


FIGURE S2. A control experiment showing that heat shock reduced the intensity of the same band as that removed by SENP1/2. SUMOylated RanGAP1 band is shown as a control for the SENP1/2 activity.