

Legends to supplemental figures

FIG. S1. Phylogenetic analysis of the two *Glomus intraradices* s. l. isolates based on exon sequences of the large subunit of mitochondrial ribosomal DNA (mtLSU). The majority rule consensus tree of 900 most parsimonious trees is presented. Bootstrap supports higher than 50 are indicated by numbers above the branches. Accession number and the respective isolate name are provided for all analysed sequences. The two isolates from the present study (Chomutov, PH5) are in blue, the mtLSU sequences of the isolates recognised as *G. irregulare* according to Stockinger et al. (36) are in red and those recognised as *G. intraradices* in green. Sequences of yet unclassified isolates are black and those belonging to other *Glomus* species are purple. The applicability of the mtLSU based qPCR assays for the analysed isolates is indicated: ^a Universal assay, ^b PH5 assay, ^c Chomutov assay. Note that mismatches in priming sites were recorded for some of the isolates other than Chomutov or PH5.

FIG. S2. Sequence alignment of the large subunit of nuclear ribosomal DNA of *G. intraradices* s. l. The sequences obtained from the cultures used as inocula in the present study are marked as 'PH5' and 'Chomutov'. Each ribotype is represented by one sequence. All other sequences were retrieved from GenBank.

FIG. S3. Schematic representation of the positions of the mtLSU primers used in this study. The structure of the mtLSU region as amplified by the primers RNL29 (Börstler et al. 2008) and GI_{mt}4510R is depicted for the two studied isolates of *G. intraradices* s. l. (PH5 – isolate PH5; CH – isolate Chomutov). Insertions specific to only one of the two isolates are marked by dashed lines. The positions of the qPCR assays are marked by black arrows, the newly developed amplification and sequencing primers by blue and red arrows, respectively.

FIG. S1

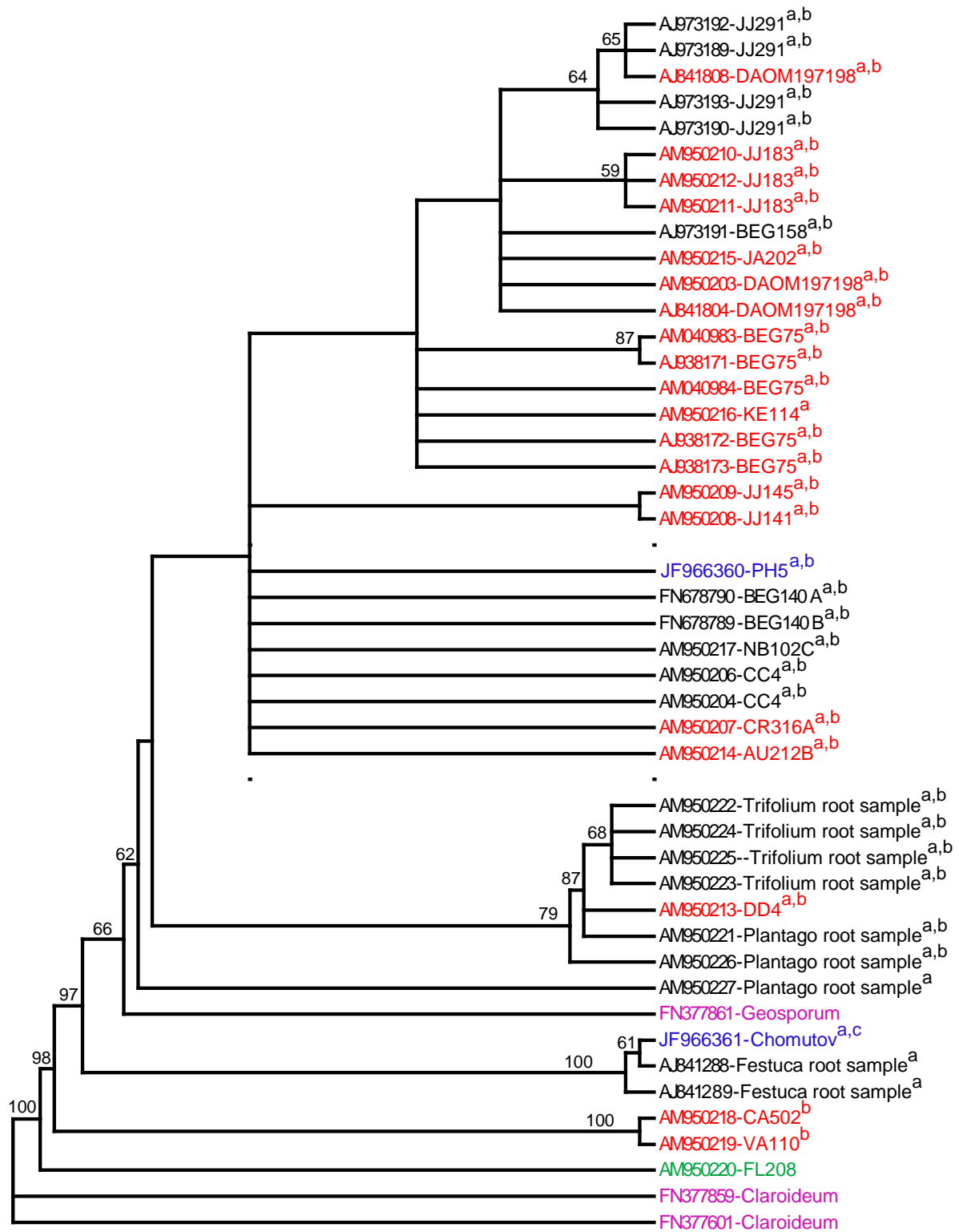


FIG. S2

	5	15	25	35	45	55
Chomutov_15_JF966369	GGCGAGAGAC	CGATAGCGAA	CAAGTACCGT	GAGGGAAAAGA	TGAAAAGAAC	TTTGAAAAGA
25INTR gi 6169692	GGCGAGAGAC	CGATAGCGAA	CAAGTACCGT	GAGGGAAAAGA	TGAAAAGAAC	TTTGAAAAGA
23INTR gi 14669703	??????????	??????????	??????????	?????AAAGA	TGAAAAGAAC	TTTGAAAAGA
24INTR gi 61696928	GGCGAGAGAC	CGATAGCGAA	CAAGTACCGT	GAGGGAAAAGA	TGAAAAGAAC	TTTGAAAAGA
28INTR gi 61696924	GGCGAGAGAC	CGATAGCGAA	CAAGTACCGT	GAGGGAAAAGA	TGAAAAGAAC	TTTGAAAAGA
27INTR gi 159139348	GGCGAGAGAC	CGATAGCGAA	CAAGTACCGT	GAGGGAAAAGA	TGAAAAGAAC	TTTGAAAAGA
26INTR gi 159139353	GGCGAGAGAC	CGATAGCGAA	CAAGTACCGT	GAGGGAAAAGA	TGAAAAGAAC	TTTGAAAAGA
PH5_7_JF966365	GGCGAGAGAC	CGATAGCGAA	CAAGTACCGT	GAGGGAAAAGA	TGAAAAGAAC	TTTGAAAAGA
PH5_15_JF966362	GGCGAGAGAC	CGATAGCGAA	CAAGTACCGT	GAGGGAA-GA	TGAAAAG-AC	TTTGAAAAGA
PH5_19_JF966363	GGCGAGAGAC	CGATAGCGAA	CAAGTACCGT	GAGGGAAAAGA	TGAAAAGAAC	TTTGAAAAGA
PH5_24_JF966364	GGCGAGAGAC	CGATAGCGAA	CAAGTACCGT	GAGGGAAAAGA	TGAAAAGAAC	TTTGAAAAGA
20INTR gi 61696929	GGCGAGAGAC	CGATAGCGAA	CAAGTACCGT	GAGGGAAAAGA	TGAAAAGAAC	TTTGAAAAGA
14INTR gi 184152616	GGCGAGAGAC	CGATAGCGAA	CAAGTACCGT	GAGGGAAAAGA	TGAAAAGAAC	TTTGAAAAGA
11INTR gi 62183614	GGCGAGAGAC	CGATAGCGAA	CAAGTACCGT	GAGGGAAAAGA	TGAAAAGAAC	TTTGAAAAGA
13INTR gi 62183610	GGCGAGAGAC	CGATAGCGAA	CAAGTACCGT	GAGGGAAAAGA	TGAAAAGAAC	TTTGAAAAGA
21INTR gi 18140768	GGCGAGAGAC	CGATAGCGAA	CAAGTACCGT	GAGGGAAAAGA	TGAAAAGAAC	TTTGAAAAGA
22INTR gi 82398570	GGCGAGAGAC	CGATAGCGAA	CAAGTACCGT	GAGGGAAAAGA	TGAAAAGAAC	TTTGAAAAGA
3INTR gi 56791312	GGCGAGAGAC	CGATAGCGAA	CAAGTACCGT	GAGGGAAAAGA	TGAAAAGAAC	TTTGAAAAGA
5INTR gi 18140788	??????????	??????????	??????????	??????????	??????????	??????????
19INTR gi 121488330	GGCGAGAGAC	CGATAGCGAA	CAAGTACCGT	GAGGGAAAAGA	TGAAAAGAAC	TTTGAAAAGA
1INTR gi 164612220	GGCGAGAGAC	CGATAGCGAA	CAAGTACCGT	GAGGGAAAAGA	TGAAAAGAAC	TTTGAAAAGA
2INTR gi 56791310	GGCGAGAGAC	CGATAGCGAA	CAAGTACCGT	GAGGGAAAAGA	TGAAAAGAAC	TTTGAAAAGA
PH5_30_JF966366	GGCGAGAGAC	CGATAGCGAA	CAAGTACCGT	GAGGGAAAAGA	TGAAAAGAAC	TTTGAAAAGA
Chomutov_27_JF966370	GGCGAGAGAC	CGATAGCGAA	CAAGTACCGT	GAGGGAAAAGA	TGAAAAGAAC	TTTGAAAAGA
15INTR gi 184152620	GGCGAGAGAC	CGATAGCGAA	CAAGTACCGT	GAGGGAAAAGA	TGAAAAGAAC	TTTGAAAAGA
10INTR gi 184152619	GGCGAGAGAC	CGATAGCGAA	CAAGTACCGT	GAGGGAAAAGA	TGAAAAGAAC	TTTGAAAAGA
Chomutov_6_JF966367	GGCGAGAGAC	CGATAGCGAA	CAAGTACCGT	GAGGGAAAAGA	TGAAAAGAAC	TTTGAAAAGA
Chomutov_12_JF966368	GACGAGAGAC	CGATAGCGAA	CAAGTACCGT	GAGGGAAAAGA	TGAAAAGAAC	TTTGAAAAGA
18INTR gi 44889794	??????????	??????????	??????????	???GGAAAAGA	TGAAAAGAAC	TTTGAAAAGA
8INTR gi 44889843	??????????	??????????	??????????	???GGAAAAGA	TGAAAAGAAC	TTTGAAAAGA
24CLA gi 6966953	GGCGAGAGAC	CGATAGCGAA	CAAGTACCGT	GAGGGAAAAGA	TGAAAAGAAC	TTTGAAAAGA
4ETUN gi 44889774	??????????	??????????	??????????	???GGAAAAGA	TGAAAAGAAC	TTTGAAAAGA
13MOS gi 49246000	GGCGAGAGAC	CGATAGCGAA	CAAGTACCGT	GAGGGAAAAGA	TGAAAAGAAC	TTTGAAAAGA
12GEO gi 197215938	??????????	??????????	??????????	???GGAAAAGA	TGAAAAGAAC	TTTGAAAAGA
6MOS gi 49246116	GGCGAGAGAC	CGATAGCAA	CAAGTACCGT	GAGGGAAAAGA	TGAAAAGAAC	TTTGAAAAGA

FIG. S2

	65	75	85	95	105	115
Chomutov_15_JF966369	GAGTTAAACA	GTACGTGAAA	TT-GTTGAAA	GGGAAACGAT	TGAAGCCAGT	CGTACCGGCG
25INTR gi 6169692	GAGTTAAACA	GTACGTGAAA	TT-GTTGAAA	GGGAAACGAT	TGAAGCCAGT	CGTACCTTCG
23INTR gi 14669703	GAGTTAAACA	GTACGTGAAA	TT-GTTGAAA	GGGAAACGAT	TGAAGCCAGT	CGTACCTTCG
24INTR gi 61696928	GAGTTAAACA	GTACGTGAAA	TT-GTTGAAA	GGGAAACGAT	TGAAGCCAGT	CGTACCTTCG
28INTR gi 61696924	GAGTTAAACA	GTACGTGAAA	TT-GTTGAAA	GGGAAACGAT	TGAAGCCAGT	CGTACCTTCG
27INTR gi 159139348	GAGTTAAACA	GTACGTGAAA	TT-GTTGAAA	GGGAAACGAT	TGAAGCCAGT	CGTACCTTCG
26INTR gi 159139353	GAGTTAAACA	GTACGTGAAA	TT-GTTGAAA	GGGAAACGAT	TGAAGCCAGT	CGTACCTTCG
PH5_7_JF966365	GAGTTAAACA	GTACGTGAAA	TT-GTTGAAA	GGGAAACGAT	TGAAGCCAGT	CGTACCTTCG
PH5_15_JF966362	GWGTTAAACA	GTACGTGAAA	TY-GTTGAAA	GGGAAACGAT	YGAAGCCAGT	CGTACCTTCG
PH5_19_JF966363	GAGTTAAACA	GTACGTGAAA	TT-GTTGAAA	GGGAAACGAT	TGAAGCCAGT	CGTACCTTCG
PH5_24_JF966364	GAGTTAAACA	GTACGTGAAA	TT-GTTGAAA	GGGAAACGAT	TGAAGCCAGT	CGTACCTTCG
20INTR gi 61696929	GAGTTAAACA	GTACGTGAAA	TT-GTTGAAA	GGGAAACGAT	TGAAGCCAGT	CGTACCTTCG
14INTR gi 184152616	GAGTTAAACA	GTACGTGAAA	TT-GTTGAAA	GGGAAACGAT	TGAAGCCAGT	CGTACCTTCG
11INTR gi 62183614	GAGTTAAACA	GTACGTGAAA	TT-GTTGAAA	GGGAAACGAT	TGAAGCCAGT	CGTACCTTCG
13INTR gi 62183610	GAGTTAAACA	GTACGTGAAA	TT-GTTGAAA	GGGAAACGAT	TGAAGCCAGT	CGTACCTTCG
21INTR gi 18140768	GAGTTAAACA	GTACGTGAAA	TT-GTTGAAA	GGGAAACGAT	TGAAGCCAGT	CGTACCTTCG
22INTR gi 82398570	GAGTTAAACA	GTACGTGAAA	TT-GTTGAAA	GGGAAACGAT	TGAAGCCAGT	CGTACCTTCG
3INTR gi 56791312	GAGTTAAATA	GTACGTGAAA	TT-GTTGAAA	GGGAAACGAT	TGAAGCCAGT	CGTACCTTCG
5INTR gi 18140788	??????????	??????????	??-???????	??????????	??????????	??????????
19INTR gi 121488330	GAGTTAAACA	GTACGTGAAA	TT-GTTGAAA	GGGAAACGAT	TGAAGCCAGT	CGTACCTTCG
1INTR gi 164612220	GAGTTAAACA	GTACGTGAAA	TT-GTTGAAA	GGGAAACGAT	TGAAGCCAGT	CGTACCTTCG
2INTR gi 56791310	GAGTTAAACA	GTACGTGAAA	TT-GTTGAAA	GGGAAACGAT	TGAAGCCAGT	CGTACCTTCG
PH5_30_JF966366	GAGTTAAACA	GTACGTGAAA	TT-GTTGAAA	GGGAAACGAT	TGAAGCCAGT	CGTACCTTCG
Chomutov_27_JF966370	GAGTTAAATA	GTACGTGAAA	TT-GTTGAAA	GGGAAACGAT	TGAAGTCAGT	CGTACCTGCG
15INTR gi 184152620	GAGTTAAATA	GTACGTGAAA	TT-GTTGAAA	GGGAAACGAT	TGAAGTCAGT	CGTACCTGCG
10INTR gi 184152619	GAGTTAAATA	GTACGTGAAA	TT-GTTGAAA	GGGAAACGAT	TGAAGCCAGT	CGTACCTGCG
Chomutov_6_JF966367	GAGTTAAATA	GTACGTGAAA	TT-GTTGAAA	GGGAAACGAT	TGAAGCCAGT	CGTACCTGCG
Chomutov_12_JF966368	GAGTTAAATA	GTACGTGAAA	TT-GTTGAAA	GGGAAACGAT	TGAAGCCAGT	CGTACCTGCG
18INTR gi 44889794	GAGTTAAACA	GTACGTGAAA	TT-GTTGAAA	GGGAAACGAT	TGAAGCCAGT	CGTACCGGCG
8INTR gi 44889843	GAGTTAAACA	GTACGTGAAA	TT-GTTGAAA	GGGAAACGAT	TGAAGCCAGT	CGTACCGGCG
24CLA gi 6966953	GAGTTAAACA	GTACGTGAAA	TT-GTTGAAA	GGGAAACGAT	TGAAGTCAGT	CGTGCTGGCG
4ETUN gi 44889774	GAGTTAAACA	GTACGTGAAA	TT-GTTGAAA	GGGAAACGAT	TGAAGTCAGT	CGTGCTGGCG
13MOS gi 49246000	GAGTTAAACA	GTACGTGAAA	TT-GTTGAAA	GGGAAACGAT	TGAAGTCAGT	CATACCAACG
12GEO gi 197215938	GAGTTAAACA	GTACGTGAAA	TT-GTTGAAA	GGGAAACGAT	TGAAGTCAGT	CATACCAACG
6MOS gi 49246116	GAGTTAAATA	GTACGTGAAA	TT-GTTGGAA	AGGAAACGAT	TAAAGTCAGT	CATATCAACG

FIG. S2

	125	135	145	155	165	175
Chomutov_15_JF966369	GGTAATCAGC	CTTTTCGGGTA	TGATTCTGTG	GAGCGTGAGG	AG-TTAAACG	CCTTCATGCC
25INTR gi 6169692	GGTAATCAGC	CTTTTCGGGTG	CGATTCTGTG	GAGTGTGATG	AGCTT-AACA	CCTTCATGCT
23INTR gi 14669703	GGTAATCAGC	CTTTTCGGGTG	CGATTCTGTG	GAGTGTGATG	AGCTT-AACA	CCTTCATGCT
24INTR gi 61696928	GGTAATCAGC	CTTTTCGGGTG	CGATTCTGTG	GAGTGTGATG	AGCTT-AACA	CCTTCATGCT
28INTR gi 61696924	GGTAATCAGC	CTTTTCGGGTG	CAATTCTGTG	GAGTGTGAGG	AGCTT-AACA	CCTTCATGCT
27INTR gi 159139348	GGTAATCAGC	CTTTTCGGGTG	CGATTCTGTG	GAGTGTGAGG	AGCTT-AACA	CCTTCATGCT
26INTR gi 159139353	GGTAATCAGC	CTTTTCGGGTG	CGATTCTGTG	GAGTGTGAGG	AGCTT-AACA	CCTTCATGCT
PH5_7_JF966365	GGTAATCAGC	CTTTTCGGGTG	CGATTCTGTG	GAGTGTGAGG	AGCTT-AACA	CCTTCATGCT
PH5_15_JF966362	GGTAATCAGC	CTTTTCGGGTG	CGATTCTGTG	GAGTGTGAGG	AGCTT-AACA	CCTTCATGCT
PH5_19_JF966363	GGTAATCAGC	CTTTTCGGGTG	CGATTCTGTG	GAGTGTGAGG	AGCTT-AACA	CCTTCATGCT
PH5_24_JF966364	GGTAATCAGC	CTTTTCGGGTG	CGATTCTGTG	GAGTGTGAGG	AGCTT-AACA	CCTTCATGCT
20INTR gi 61696929	GGTAATCAGC	CTTTTCGGGTG	CGATTCTGTG	GGGTGTGAGG	AGCTT-AACA	CCTTCATGCT
14INTR gi 184152616	GGTAATCAGC	CTTTTCGGGTG	CGATTCTGTG	GAGTGTGAGG	AGCTTAAACA	CCTTCATGTT
11INTR gi 62183614	GGTAATCAGC	CTTTTCGGGTG	CGATTATGTG	GAGTGTGAGG	AGCTTAAACA	CCTTCATGTT
13INTR gi 62183610	GGTAATCAGC	CTTTTCGGGTG	CGATTATGTG	GAGTGTGAGG	AGCTTAAACA	CCTTCATGTT
21INTR gi 18140768	GGTAATCAGC	CTTTTCGGGTG	CGATTCTGTG	GAGTGTGAGG	AG-TTAAACA	CCTTCATGTT
22INTR gi 82398570	GGTAATCAGC	CTTTTCGGGTG	CGATTCTGTG	GAGTGTGAGG	AGCTTAAACA	CCTTCATGTT
3INTR gi 56791312	GGTAATCAGC	CTTTTCGGGTG	CGATTCTGTG	GAGTGTGAGG	AGCTTAAACA	CCTTCATGTT
5INTR gi 18140788	??????????	??????????G	CGATTCTGTG	GAGTGT-AGG	AGCTTTAACA	CCTTCATGCT
19INTR gi 121488330	GGTAATCAGC	CTTTTCGGGTG	CGATTCTGTG	GAGTTTGAGG	AGCTTTAACA	CCTTCATGCT
1INTR gi 164612220	GGTAATCAGC	CTTTTGGGTG	TGATTCTGTG	GAGCGTGAGG	AGTTTTAACA	CCTTCATGCT
2INTR gi 56791310	GGTAATCAGC	CTTTTGGGTG	TGATTTTGTG	GAGCGTGAAG	AG-TTAAACG	CCTTCATGCT
PH5_30_JF966366	GGTAATCAGC	CTTTTGGGTG	TGATTTTGTG	GAGTGTGAAG	AG-TTAAACG	CCTTCATGCC
Chomutov_27_JF966370	GATAATCAGC	CTTTTAGGATG	CGATTTTGTG	GAGTGTGAGG	AGCT-AATCG	CCTTCATGCC
15INTR gi 184152620	GATAATCAGC	CTTTTAGGATG	CGATTTTGTG	GAGTGTGAGG	AGCT-AATCG	CCTTCATGCC
10INTR gi 184152619	GGTAATCAGC	CTTTTGGGCA	TGATTCTGTG	GAGCGTGAGG	AG-TTAAACG	CCTTCATGCC
Chomutov_6_JF966367	GGTAATCAGC	CTTTTGGGCA	TGATTCTGTG	GAGCGTGAGG	AG-TTAAACG	CCTTCATGCC
Chomutov_12_JF966368	GGTAATCAGC	CTTTTGGGCA	TGATTCTGTG	GAGCGTGAGG	AG-TTAAACG	CCTTCATGCC
18INTR gi 44889794	GGTAATCAGC	CTTTTCGGGTA	TGATTCTGTG	GAGCGTGAGG	AG-TTAAACG	CCTTCATGCC
8INTR gi 44889843	GGTAATCAGC	CTTTTGGAGCG	TGATTATGTG	GAGCGTGAGG	AG-TTAAACG	CCTTCATGCC
24CLA gi 6966953	CGAAATCAAC	CCTCTCGTCG	AGAGGACACA	TGGCGTGGCG	AGCCTCAAAA	CCGTCACGAA
4ETUN gi 44889774	CGAAATCAAC	CATCTCGTCT	TGAGGTCGCA	TGGCGCGACG	AGCCTCAAAA	CCGTCACGAA
13MOS gi 49246000	GGAAATCAAC	CTTTTCGAGCT	TGGTCTCGTG	GGTTTTGAAG	AGTTTCAAAG	CCTTC-GGAT
12GEO gi 197215938	GGAAATCAAC	CTTTTGGAGTT	CGTTCCTTGTG	GGTTTCGAGG	AGTTTAAAAG	CCTTC-TAAT
6MOS gi 49246116	GGAAATCAAC	CTTTTGGAGTT	CGGTCTTGTG	GGTTT-GAAG	AGTTTCAAAG	CCTTC-GGAT

FIG. S2

	185	195	205	215	225	235
Chomutov_15_JF966369	C-GCAT---A	TTTCGTGCTCT	T-GGGTGTAC	TTGCTCGTGT	GGTTGGTTAA	CATCAATTTT
25INTR gi 6169692	TTGCAT---A	TTTGTGCTCT	T-GGGTGTAC	TTGCCCGTGT	GGTTGGTTAA	CATCAATTTT
23INTR gi 14669703	TTGCAT---A	TTTGTGCTCT	T-GGGTGTAC	TTGCCCGTGT	GGTTGGTTAA	CATCAATTTT
24INTR gi 61696928	TTGCAT---A	TTTGTGCTCT	T-GGGTGTAC	TTGCCCGTGT	GGTAGGTTAA	CATCAATTTT
28INTR gi 61696924	TTGCAT---A	TTTGTGCTCT	T-GGGTGTAC	TTGCCCGTGT	GGTTGGTTAA	CATCAATTTT
27INTR gi 159139348	TTGCAT---A	TTTGTGCTCT	T-GGGTGTAC	TTGCCCGTGT	GGTTGGTTAA	CATCAATTTT
26INTR gi 159139353	TTGCAT---A	TTTGTGCTCT	T-GGGTGTAC	TTGCCCGTGT	GGTTGGTTAA	CATCAATTTT
PH5_7_JF966365	TTGCAT---A	TTTGTGCTCT	T-GGGTGTAC	TTGCTCGTGT	GGTTGGTTAA	CATCAATTTT
PH5_15_JF966362	TTGCAT---A	TTYGTGCTCT	C-GGGTGTAC	TTGCCCGTGT	GGTTGGTTAA	CATCAATTTT
PH5_19_JF966363	TTGCAT---A	TTTGTGCTCT	T-GGGTGTAC	TTGCCCGTGT	GGTTGGTTAA	CATCAATTTT
PH5_24_JF966364	TTGCAT---A	TTTGTGCTCT	T-GGGTGTAC	TTGCCCGTGT	GGTTGGTTAA	CATCAATTTT
20INTR gi 61696929	TTGCAT---A	TTTGTGCTCT	T-GGGTGTAC	TTGCCCGTGT	GGTTGGTTAA	CATCAATTTT
14INTR gi 184152616	TTGCAT---A	TTTCGTACTCT	T-GGGTGTAC	TTGCCCGTGT	GGTTGGTTAA	CATCAATTTT
11INTR gi 62183614	TTGCAT---A	TTTCGTACTCT	T-GGGTGTAC	TTGCCCGTGT	GGTTGGTTAA	CATCAATTTT
13INTR gi 62183610	TTGCAT---A	TTTCGTACTCT	T-GGGTGTAC	TTGCCCGTAT	GGTTGGTTAA	CATCAATTTT
21INTR gi 18140768	TTGCAT---A	TTTCGTACTCT	T-GGGTGTAC	TTGCCCGTGT	GGTTGGTTAA	CATCAATTTT
22INTR gi 82398570	TTGCAT---A	TTTCGTACTCT	T-GGGTGTAC	TTGCCCGTGT	GGTTGGTTAA	CATCAATTTT
3INTR gi 56791312	TTGCAT---A	TTTCGTACTCT	T-GGGTGTAC	TTGCCCGTGT	GGTTGGTTAA	CATCAATTTT
5INTR gi 18140788	TTGCAT---A	TTTCGTGCTCT	T-GGGTGTAC	TTGCCCGTGT	GGTTGGTTAA	CATCAATTTT
19INTR gi 121488330	TTGCAT---A	TTTCGTGCTCT	T-GGGTGTAC	TTGCCCGTGT	GGTTGGTTAA	CATCAATTTT
1INTR gi 164612220	TTGCAT---A	TTTCGTGCTCT	T-GGGTGTAC	TTGCCCGTGT	GGTTGGTTAA	CATCAATTTT
2INTR gi 56791310	T-GCAT---A	TTTCGTGCACT	TTGGGTGTAC	TTGCCCGTGT	GGTTGGTTAA	CATCAATTTT
PH5_30_JF966366	T-GCAT---A	TTTCGTGCACT	TTGGGTGTAC	TTGCCCGTGT	GGTTGGTTAA	CATCAATTTT
Chomutov_27_JF966370	T-GTAT---A	TTTCGTGTACT	TGGGGTGTAC	TTATTCGTGT	GGTAAGTTAA	CATCAATTTT
15INTR gi 184152620	T-GTAT---A	TTTCGTGTACT	TGGGGTGTAC	TTATTCGTGT	GGTAAGTTAA	CATCAATTTT
10INTR gi 184152619	T-GCAT---A	TTTCGTGTACT	TTGGGTGTAC	TTGCCTGTGT	GGTTAGTTAA	CATCAATTTT
Chomutov_6_JF966367	T-GCAT---A	TTTCGTGTACT	TTGGGTGTAC	TTGCCTGTGT	GGTTAGTTAA	CATCAATTTT
Chomutov_12_JF966368	T-GCAT---A	TTTCGTGTACT	TTGGGTGTAC	TTGCCTGTGT	GGTTAGTTAA	CATCAATTTT
18INTR gi 44889794	T-GCAT---A	TTTCGTGCTCT	T-GGGTGTAC	TTGCTCGTGT	GGTTGGTTAA	CATCAATTTT
8INTR gi 44889843	T-TCAT---A	TTTCGTGCTCT	TTGGGTGTAC	TTGCTCGTGT	GGTAGGTTAA	CATCAATTTT
24CLA gi 6966953	GCGTG---AA	CTCTTGCCGA	AAAGGAGCAC	TTTCGTGTCC	G-CTGGTTAA	CATCAATTTT
4ETUN gi 44889774	GCGTG---AA	CTCTTGACGA	AAAGGTGCAC	TTTCGTGTCC	G-CTGGTTAA	CATCAATTTT
13MOS gi 49246000	TCGCGGG---A	TT-GGGATCT	CTTGGTGTAC	TTTTTTCGTAC	GGTTAGTCAA	CATCGGTTTT
12GEO gi 197215938	TTGTGAGG-A	TT-GGGCTCT	TTTGGTGTAC	TTTTTTCGTAC	GGTTAGTCAA	CATCGGTTTT
6MOS gi 49246116	TTGTGAG--A	TT-GGGATCT	CTTGGTGCAC	TTTTTTCGTAC	GGTTAGTCAA	CATCGGTTTT

FIG. S2

	245	255	265	275	285	295
Chomutov_15_JF966369	GGTTATCATA	AAATGGCTGG	AGGAATGTAG	CTTCGATTTTC	G-ATCGAAGT	GTT-ATAGCC
25INTR gi 6169692	GGTTATCATA	AAATGATTGG	AGGAATGTAG	CTTCGATCTC	GTATTGAAGT	GTT-ATAGCC
23INTR gi 14669703	GGTTATCATA	AAATGACTGG	AGGAATGTAG	CTTCGATCTC	GTATTGAAGT	GTTTATAGCC
24INTR gi 61696928	GGTTATCATA	AAATGATTGG	AGGAATGTAG	CTTCGATCTC	GTATTGAAGT	GTT-ATAGCC
28INTR gi 61696924	GGTTATCATA	AAATGATTGG	AGGAATGTAG	CTTCGATCTC	GTATTGAAGT	GTT-ATAGCC
27INTR gi 159139348	GGTTATCATA	AAATGATTGG	AGGAATGTAG	CTTCGATCTC	GTATTGAAGT	GTT-ATAGCC
26INTR gi 159139353	GGTTATCATA	AAATGATTGG	AGGAATGTAG	CTTCGATCTC	GTATTGAAGT	GTT-ATAGCC
PH5_7_JF966365	GATTATCATA	AAATGATTGG	AGGAATGTAG	CTTCGATCTC	GTATTGAAGT	GTT-ATAGCC
PH5_15_JF966362	AATTATCATA	AAATGACTGG	AGGAATGTAG	CTTCGATCTC	GTATTGAAGT	GTT-ATAGCC
PH5_19_JF966363	GATTATCATA	AAATGACTGG	AGGAATGTAG	CTTCGATCTC	GTATTGAAGT	GTT-ATAGCC
PH5_24_JF966364	GATTATCATA	AAATGACTGG	AGGAATGTAG	CTTCGATCTC	GTATTGAAGT	GTT-ATAGCC
20INTR gi 61696929	GGTTATCATA	AAATGACTGG	AGGAATGTAG	CTTCGATCTC	GTATTGAAGT	GTTTATAGCC
14INTR gi 184152616	GGTGGTCATA	AAATGACTGG	GGGAATGTAG	CTTCGATCTT	GTATTGAAGT	GTT-ATAGCC
11INTR gi 62183614	GGTGGTCATA	AAATGACTGG	AGGAATGTAG	CTTCGATCTC	GTATTGAAGT	GTT-ATAGCC
13INTR gi 62183610	GGTGGTCATA	AAATGACTGG	AGGAATGTAG	CTTCGATCTC	GTATTGAAGT	GTT-ATAGCC
21INTR gi 18140768	GGTGGTCATA	AAATGACTGG	AGGAATGTAG	CTTCGATCTC	GTATTGAAGT	GTT-ATAGCC
22INTR gi 82398570	GGTGGTCATA	AAATGACTGG	AGGAATGTAG	CTTCGATCTC	GTATTGAAGT	GTT-ATAGCC
3INTR gi 56791312	GGTGGTCATA	AAATGACTGG	GGGAATGTAG	CTTCGATCTT	GTATTGAAGT	GTT-ATAGCC
5INTR gi 18140788	GGGTACCATA	AAATGGCTGG	AGGAATGTAG	CTTCGATCTT	GTATTGAAGT	GTT-ATAGCC
19INTR gi 121488330	GGGCACCATA	AAATGGCTGG	AGGAATGTAG	CTTCGATCTT	GTATTGAAGT	GTT-ATAGCC
1INTR gi 164612220	GTGCACCATA	AAATGGCTGG	AGGAATGTAG	CTTCGATCTT	GTATTGAAGT	GTT-ATAGCC
2INTR gi 56791310	GGTGGTCATA	AAATGACTGG	GGGAATGTAG	CTTCGATCTT	GTATTGAAGT	GTT-ATAGCC
PH5_30_JF966366	GGTTATCATA	AAATGACTGG	AGGAATGTAG	CTTCGATCTC	GTATTGAAGT	GTT-ATAGCC
Chomutov_27_JF966370	GGTTGTCATA	AAATGACTGG	AGGAATGTAG	CTTCGATCTC	GTATTGAAGT	GTT-ATAGCC
15INTR gi 184152620	GGTTGTCATA	AAATGACTGG	AGGAATGTAG	CTTCGATCTC	GTATTGAAGT	GTT-ATAGCC
10INTR gi 184152619	GGTTATCATA	AAATGGTCCG	AGGAATGTAG	CTTCGATTTTC	G-ATTGAAGT	GTT-ATAGCC
Chomutov_6_JF966367	GGTTATCATA	AAATGGCTGG	AGGAATGTAG	CTTCGATTTTC	G-ATTGAAGT	GTT-ATAGCC
Chomutov_12_JF966368	GGTTATCATA	AAATGGCTGG	AGGAATGTAG	CTTCGATTTTC	G-ATTGAAGT	GTT-ATAGCC
18INTR gi 44889794	GGTTATCATA	AAATGGCTGG	AGGAATGTAG	CTTCGATCTC	GTATTGAAGT	GTT-ATAGCC
8INTR gi 44889843	GATCATCATA	AAATGGTTGG	AGGAATGTAG	CTTCGATCTC	GTATTGAAGT	GTT-ATAGCC
24CLA gi 6966953	GAACGCATA	AAAAGCTGG	AGGGATGTGG	CTCC---TTC	G----GGAGT	GTT-ATAACC
4ETUN gi 44889774	GATCGTCATA	AAAAGCTGG	AGGGATGTGG	CTCC---TTC	G----GGAGT	GTT-ATAACC
13MOS gi 49246000	GAATGTCATA	AAATGACTGG	AGGAATGTAG	CTTCGATCTC	GTATTGAAGT	GTT-ATAGCC
12GEO gi 197215938	GAATGTCATA	AAATGACTGG	AGGAATGTGG	CTTCGATCTC	GTATCGAAGT	GTT-ATAACC
6MOS gi 49246116	AATCATTATA	AAATGGTTGA	AGGAATGTAA	CTTTGATTTTC	G-ATCGAGGT	ATT-ATAGCC

FIG. S2

	305	315	325	335	345	355
Chomutov_15_JF966369	TTTGGCAGA-	TGTGATGATC	GGGATTGAGG	ATTGCAACGG	ATACCCTTCG	GGGCTACTTG
25INTR gi 6169692	TTCGGTAGA-	TGTGATGAAC	GAGATTGAGG	ATTGCAACGG	ATACCCTTCG	GGGCTACCTG
23INTR gi 14669703	TTCGGTAGA-	TGTGATGAAC	GAGATTGAGG	ATTGCAACGG	ATACCCTTCG	GGGCTACCTG
24INTR gi 61696928	TTCGGTAGA-	TGTGATGAAC	GAGATTGAGG	ATTGCAACGG	ATACCCTTCG	GGGCTACCTG
28INTR gi 61696924	TTCGGTAGA-	TGTGATGAAC	GAGATTGAGG	ATTGCAACGG	ATACCCTTCG	GGGCTACCTG
27INTR gi 159139348	TTCGGTAGA-	TGTGATGATC	GAGATTGAGG	ATTGCAACGG	ATACCCTTCG	GGGCTACCTG
26INTR gi 159139353	TTCGGTAGA-	TGTGATGATC	GAGATTGAGG	ATTGCAACGG	ATACCCTTCG	GGGCTACCTG
PH5_7_JF966365	TTCGGTAGA-	TGTGATGATC	GAGATTGAGG	ATTGCAACGG	ATACCCTTCG	GGGCTACCTG
PH5_15_JF966362	TTTGGTAGA-	TGTGATGATC	GAGATTGAGG	ATTGCAACGG	ATACCCTTCG	GGGCTACCTG
PH5_19_JF966363	TTTGGTAGA-	TGTGATGATC	GAGATTGAGG	ATTGCAACGG	ATACCCTTCG	GGGCTACCTG
PH5_24_JF966364	TTCGGTAGA-	TGTGATGATC	GAGATTGAGG	ATTGCAACGG	ATACCCTTCG	GGGCTACCTG
20INTR gi 61696929	TTCGGTAGA-	TGTGATGAAC	GAGATTGAGG	ATTGCAACGG	ATACCCTTCG	GGGCTACCTG
14INTR gi 184152616	TTCGGTAGA-	TGTGATGATC	GAGATTGAGG	ATTGCAACGG	ATACCCTTTG	GGGCTACCTG
11INTR gi 62183614	TTCGGTAGA-	TGTGATGATC	GAGATTGAGG	ATTGCAACGG	ATACCCTTTG	GGGCTACCTG
13INTR gi 62183610	TTCGGTAGA-	TGTGATGATC	GAGATTGAGG	ATTGCAACGG	ATACCCTTCG	GGGCTACCTG
21INTR gi 18140768	TTCGGTAGA-	TGTGATGATC	GAGATTGAGG	ATTGCAACGG	ATACCCTTCG	GGGCTACCTG
22INTR gi 82398570	TTCGGTAGA-	TGTGATGATC	GAGATTGAGG	ATTGCAACGG	ATACCCTTCG	GGGCTACCTG
3INTR gi 56791312	TTCGGTAGA-	TGTGATGATC	GAGATTGAGG	ATTGCAACGG	ATACCCTTCG	GGGCTACCTG
5INTR gi 18140788	TTCGGTAGA-	TGTGGTGATC	GAGATTGAGG	ATTGCAACGG	ATACCCTTCG	GGGCTACCTG
19INTR gi 121488330	TTCGGTAGA-	TGTGGTGATC	GAGATTGAGG	ATTGCAACGG	ATACCCTTCG	GGGCTACCTG
1INTR gi 164612220	TTCGGTAGA-	TGTGGTGATC	GAGATTGAGG	ATTGCAACGG	ATACCCTTCG	GGGCTACCAG
2INTR gi 56791310	TTCGGTAGA-	TGTGATGATC	GAGATTGAGG	ATTGCAACGG	ATACCCTTCG	GGGCTACCTG
PH5_30_JF966366	TTCGGTAGA-	TGTGATGATC	GAGATTGAGG	ATTGCAACGG	ATACCCTTCG	GGGCTACCTG
Chomutov_27_JF966370	TTCGGTAGA-	TGTGATTATC	GGGATTGAGG	ATCGCAACGG	ATACCCTTCG	GGGCTACTTG
15INTR gi 184152620	TTTGGTAGA-	TGTGATTATC	GGGATTGAGG	ATTGCAACGG	ATACCCTTCG	GGGCTACTTG
10INTR gi 184152619	TTCGGCAGA-	TGTGATGATC	GGGATTGAGG	ATTGCAACGG	ATACCCTTCG	GGGCTACCTG
Chomutov_6_JF966367	TTCGGCAGA-	TGTGATGATC	GGGATTGAGG	ATTGCAACGG	ATACCCTTCG	GGGCTACCTG
Chomutov_12_JF966368	TTCGGCAGA-	TGTGATGATC	GGGATTGAGG	ATTGCAACGG	ATACCCTTCG	GGGCTACCTG
18INTR gi 44889794	TTCGGCAGA-	TGTGATGATT	GGGATTGAGG	ATTGCAACGG	ATACCCTTCG	GGGCTACCTG
8INTR gi 44889843	TTTAGCAGA-	TGTGATGATT	GGGATTGAGG	ATTGCAACGG	ATACCCTTCG	GGGCTACCCG
24CLA gi 6966953	TTTAGCGGAA	TGTGGTGGTC	GGGATTGAGG	ATTGCAACGA	ATACC-TTTA	GGGCTGTTCC
4ETUN gi 44889774	TTTAGCGGAA	TGTGGTGGTC	GGGATTGAGG	ATTGCAACGA	ATACC-TTCA	GGGCTGTTCC
13MOS gi 49246000	TTTGGTAGA-	TGTGATGTTT	GAGACCGAGG	ATTGCAACGG	ATACCCTTCA	GGGCTATTCC
12GEO gi 197215938	TTTGGTAGA-	TGTGATGTTT	GAGACCGAGG	ATTGCAACGG	ATACCCTTCC-	AGGCTATTCC
6MOS gi 49246116	TTTGACAGA-	TGTAATGATC	AAGACCGAGG	ATTGCAACGG	ATACCCTTCA	GGGCTATTCC

FIG. S2

	365	375	385	395	405	415
Chomutov_15_JF966369	TC-TGATCTC	TGAT-CGTTG	CTCTGGTGCC	GAAAGCTTGC	TTACGGTTAT	CAAAGTCGA-
25INTR gi 6169692	TC-TGGTCTC	TGAT-CGTTG	CTCTGGTGCC	GAAAGCTTGC	TTACGGTCAT	CAAAGTCGA-
23INTR gi 14669703	TC-TGGTCTC	TGAT-CGTTG	CTCTGGTGCC	GAAAGCTTGC	TTACGGTCAT	CAAAGTCGA-
24INTR gi 61696928	TC-TGGTCTC	TGAT-CGTTG	CTCTGGTGCC	GAAAGCTTGC	TTACGGTCAT	CAAAGTCGA-
28INTR gi 61696924	TC-TGGTCTC	TGAT-TGTTG	CTCTGGTGCC	GAAAGCTTGC	TTACGGTTAT	CAAAGTCGA-
27INTR gi 159139348	TC-TGGTCTC	TGAT-CGTTG	CTCTGGTGCC	GAAAGCTTGC	TTACGGTTAT	CAAAGTCGA-
26INTR gi 159139353	TC-TGGTCTC	TGAT-CGTTG	CTCTGGTGCC	GAAAGCTTGC	TTACGGTTAT	CAAAGTCAA-
PH5_7_JF966365	TC-TGGTCTC	TGAT-CGTTG	CTCTGGTGCC	GAAAGCGTGC	TTACGGTTAT	CAAAGTCGA-
PH5_15_JF966362	TC-TGGTCTC	TGAT-CGTTG	CTCTGGTGCC	GAAAGCTTGC	TTACGGTTAT	CAAAGTCGA-
PH5_19_JF966363	CC-TGGTCTC	TGAT-CGTTG	CTCTGGTGCC	GAAAGCGTGC	TTACGGTTAT	CAAAGTCGA-
PH5_24_JF966364	TC-TGGTCTC	TGAT-CGTTG	CTCTGGTGCC	GAAAGCGTGC	TTACGGTTAT	CAAAGTCGA-
20INTR gi 61696929	TC-TGGTCTC	TGAT-CGTTG	CTCTGGTGCT	GAAAGCTTGC	TTACAGTTAT	CAAAGTTGA-
14INTR gi 184152616	TC-TGATCTC	TGAT-CGTTG	CTTTGGTGCC	GAAAGCTTGC	TTACGGTTAT	CAAAGTCGA-
11INTR gi 62183614	TC-TGATCTC	TGAT-CGTTG	CTTTGGTGCC	GAAAGCTTGC	TTACGGTTAT	CAAAGTCGA-
13INTR gi 62183610	TC-TGATCTC	TGAT-CGTTG	TTCTGGTGCC	GAAAGCTTGC	TTACGGTTAT	CAAGGTCGA-
21INTR gi 18140768	TC-TGATCTC	TGAT-CGTTG	CTCTGGTGCC	GAAAGCTTGC	TTACGGTTAT	CAAAGTCGA-
22INTR gi 82398570	TC-TGATCTC	TGAT-CGTTG	CTCTGGTGCC	GAAAGCTTGC	TTACGGTTAT	CAAAGTCGA-
3INTR gi 56791312	TC-TGGTCTC	TGAT-CGTTG	CTCTGGTGCC	GAAAGCTTGC	TTACGGTTAT	CAAAGTCGA-
5INTR gi 18140788	TC-TGATCTC	TGAT-CGTTG	CTCTGGTGCC	GAAAGCTTGC?	??????????	??????????
19INTR gi 121488330	TC-TGATCTC	TGAT-CGTTG	CTTTGGTGCT	GAAAGCGTGC	TTATAGTTAT	CAAAGTCGA-
1INTR gi 164612220	TC-TGATCTC	TGAT-CGTTG	CTTTGGTGCT	GAAAGCGTGC	TTATAGTTAT	CAAAGTCGA-
2INTR gi 56791310	TC-TGGTCTC	TGAT-CGTTG	CTCTGGTGCC	GAAAGCTTGC	TTACAGTTAT	CAAAGTCGA-
PH5_30_JF966366	TC-TGGTCTC	TGAT-CGTTG	CTCTGGTGCC	GAAAGCTTGC	TTACGGTTAT	CAAAGTCGA-
Chomutov_27_JF966370	TC-TGATCTC	TGAT-CGTTG	CTCTGGTGCC	GAAAGCGTGC	TTACGGTTAT	CAAAGTCGA-
15INTR gi 184152620	TC-TGATCTC	TGAT-CGTTG	CTCTGGTGCC	GAAAGCGTGC	TTACGGTTAT	CAAAGTCGA-
10INTR gi 184152619	TC-TGGTCTC	TGAT-CGTTG	CTCTGGTGCC	GAAAGCGTGC	TTACGGTTAT	CAAAGTCGA-
Chomutov_6_JF966367	TC-TGGTCTC	TGAT-CGTTG	CTCTGGTGCC	GAAAGCGTGC	TTACGGTTAT	CAAAGTCGA-
Chomutov_12_JF966368	TC-TGGTCTC	TGAT-CGTTG	CTCTGGTGCC	GAAAGCGTGC	TTACGGTTAT	CAAAGTCGA-
18INTR gi 44889794	TC-TGGTCTC	TGAT-CGTTG	CTTTGGTGCC	GAAAGCGTGC	TTACGGTTAT	CAAAGTCGA-
8INTR gi 44889843	TC-TGATCTC	TGAA-AGTTA	CTCTGGTGCC	GAAAGCTTGC	TTACGGT-AT	CAAAGTTAA-
24CLA gi 6966953	ACCTGGCTTC	TCTT-TGGCA	TCCTGGTGAC	GACAGCTTGC	TGAC-GTTGT	TAGGAATC-G
4ETUN gi 44889774	ACCTGGCTTC	TCAT-TGGTA	TCCTGGTGAC	GACAGCTTGC	TGAC-TTTGC	TAGGATTC-G
13MOS gi 49246000	TC-TGATCTC	TGATACGTTG	CCTTGATGTT	GAAAGCTTGC	TTATGAT-GT	TAGGGTATTA
12GEO gi 197215938	TC-TGATCTC	TGATACGTTG	CCTTGATGTC	GAAAGCGTGC	TTATGAT-GT	TAGGGTATTA
6MOS gi 49246116	TC-TGATCTT	TGGTACTTGT	CTTTAGTATC	GGAAGCTTGC	TAACGAT-AT	TAGGGTTC-A

FIG. S2

	425	435	445
Chomutov_15_JF966369	-TGGTCAACA	GGTTAGAACG	-GGTTAAA
25INTR gi 6169692	-TGGTCAATA	GGTTAGAACG	-GGTTAAA
23INTR gi 14669703	-TGGTCAATA	GGTTAGAACG	-GGTTAAA
24INTR gi 61696928	-TGGTCAATA	GGTTAGAACG	-GGTTAAA
28INTR gi 61696924	-TGGTCAATA	GGTTAGAACG	-GGTTAAA
27INTR gi 159139348	-TGGTCAATA	GGTTAGAACG	-GGTTAAA
26INTR gi 159139353	-TGGTCAATA	GGTTANAACG	-GGTTAAA
PH5_7_JF966365	-TGGTCAATA	GGTTAGAACG	-GGTTAAA
PH5_15_JF966362	-TGGTCAATA	GGTTAGAACG	-GGTT???
PH5_19_JF966363	-TGGTCAATA	GGTTAGAACG	-GGTTAAA
PH5_24_JF966364	-TGGTCAATA	GGTTAGAACG	-GGTTAAA
20INTR gi 61696929	-TGGTCAATA	GGTTAGAACG	-GGTTAAA
14INTR gi 184152616	-TGGT?????	???????????	???????????
11INTR gi 62183614	-TGGTCAATA	GGTTAGAATG	-GGTTAAA
13INTR gi 62183610	-TGGTCAATA	GGTTAGAACG	-GGTTAAA
21INTR gi 18140768	-TGGTCAATA	GGTTAGAACG	-GGTTAAA
22INTR gi 82398570	-TGGTCAATA	GGTTAGAACG	-GGTTAAA
3INTR gi 56791312	-TGGTCAATA	GGTTAGAACG	-GGTTAAA
5INTR gi 18140788	???????????	???????????	???????????
19INTR gi 121488330	-TGGTTAATA	GGTTAGAATG	-GGTTAAA
1INTR gi 164612220	-TGGTTAATA	GGTTAGAATG	-GGTTAAA
2INTR gi 56791310	-TGGTCAATA	GGTTAGAACG	-GGTTAAA
PH5_30_JF966366	-TGGTCAATA	GGTTAGAACG	-GGTTAAA
Chomutov_27_JF966370	-TGGTCAATA	GGTTAGAACG	-GGTTAAA
15INTR gi 184152620	-TGGT?????	???????????	???????????
10INTR gi 184152619	-TGGT?????	???????????	???????????
Chomutov_6_JF966367	-TGGTCAATA	GGTTAGAACG	-GGTTAAA
Chomutov_12_JF966368	-TGGTCAATA	GGTTAGAACG	-GGTTAAA
18INTR gi 44889794	-TGGTCAATA	GGTTAGAACG	-GGTTAAA
8INTR gi 44889843	-CGTTCAACA	GGTTAGAACG	-GGTTAAA
24CLA gi 6966953	CCTTTGAACA	GGCTAGAGTG	TGA-GCAA
4ETUN gi 44889774	CCTCTGAACA	GGCTAGAGTG	TGA-GCAA
13MOS gi 49246000	C-GGTCAAAA	GGTTAGAACG	-AATTACA
12GEO gi 197215938	C-GGTCAAAA	GGTTAGAACG	-GATTAAA
6MOS gi 49246116	CGGGTC-AAA	GGTTGGAACG	-GATTAAA

FIG. S3

