

TABLE S1. Phenotypic characteristics of *M. osloensis* strains and group A isolates

	<i>M. osloensis</i> Type strain and reference strain <sup>a</sup>	Group A strains (4 isolates) <sup>b</sup>
Gram stain	-	-
Morphology	Rod	Rod
Motility	-	-
Oxygen condition	Aerobic	Aerobic
Growth on SCD agar	+	+
Hemolysis	-	-
Catalase test	+	+
Oxidase	+	+
API-ZYM		
Alkaline phosphatase	+	+
Esterase (C 4)	+	+
Esterase Lipase (C 8)	+	+
Lipase (C 14)	-	-
Leucine arylamidase	+	+
Valine arylamidase	d(1/2)	d(3/4)
Cystine arylamidase	d(1/2)	-
Trypsin	-	-
Chymotrypsin	-	-
Acid phosphatase	+	+
Naphthol-AS-BIphosphohydrolase	+	+
-Galactosidase	-	-
-Galactosidase	-	-
-Glucuronidase	-	-
-Glucosidase	-	-
-Glucosidase	-	-
N-acetyl-b-glucosaminidase	-	-
-Mannosidase	-	-
-Fucosidase	-	-

+, positive; -, negative; d, variable. The numbers in parentheses are the numbers of positive strain(s)/test strains.

<sup>a</sup>, CCUG350T (=ATCC19976T) and NCIMB 10693

<sup>b</sup>, KMC41, KMC43, KMC44, and KMC46

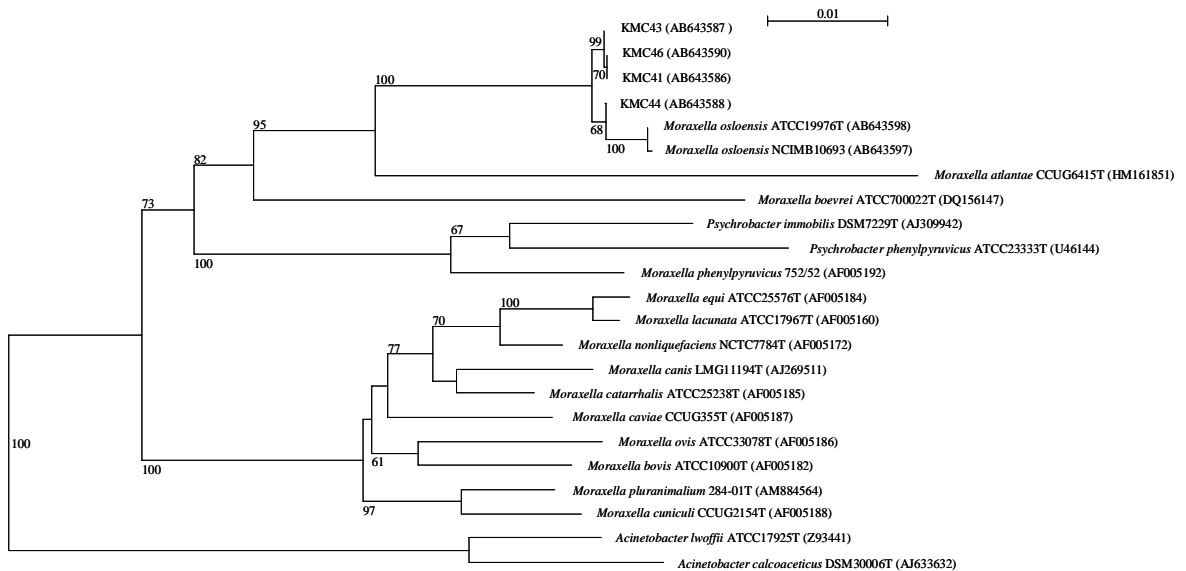


FIG. S1. Phylogenetic tree based on 16S rRNA gene. Sequence comparison by the neighbor-joining algorithm showing the relationships between the four isolates of *Moraxella osloensis* and other reference species of the genus *Moraxella*. Bootstrap values (expressed as a percentage of 1000 replications) are given at the branching points. *Acinetobacter calcoaceticus* DSM30006T was used as an outgroup. Bar shows 0.01% sequence divergence.