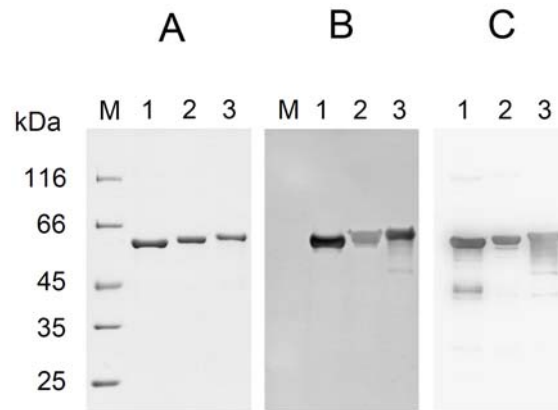


## Supplementary Information



**FIG. S1. The protein electrophoresis analysis of purified PHA synthases.**

(A) Coomassie Brilliant Blue R-250 staining. (B) Activity staining of PHA synthase. (C) Western blotting of PHA synthase. One microgram of purified PHA synthase was loaded on each lane. Lane M: unstained protein molecular weight marker (Fermentas); lane 1: the mesophile PHA synthase (PhaC<sub>H16</sub>) purified from *E. coli* BLR(DE3)/pEH16C; lane 2: the chimeric PHA synthase (PhaC<sub>H16β</sub>) purified from *E. coli* BLR(DE3)/pEH16β; lane 3: the thermophile PHA synthase (PhaC<sub>Csp</sub>) purified from *E. coli* BLR(DE3)/pECspC. Anti-PhaCH16 antiserum is the first antibody for Western blotting analysis.