

Supplemental figures

Figure S1

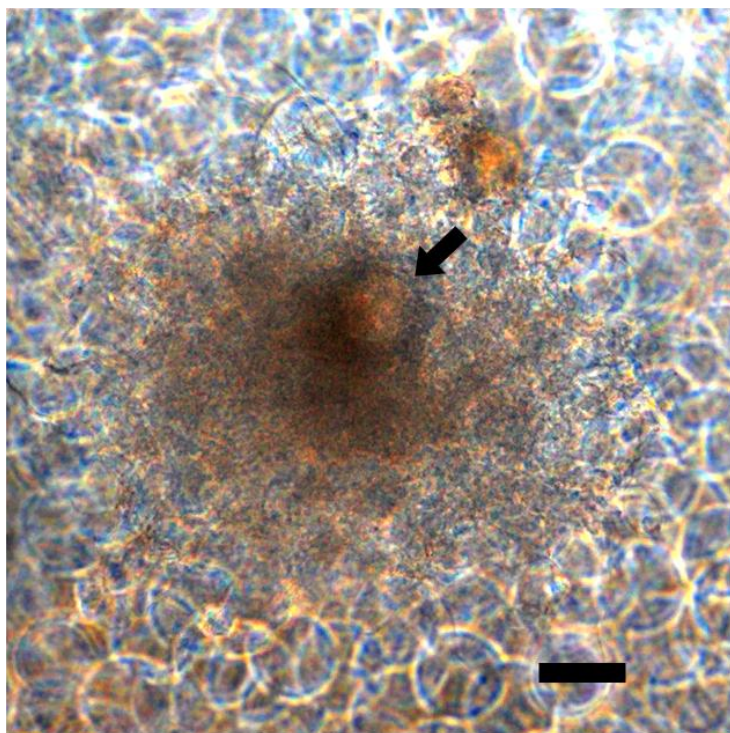


Figure S1. *In situ* microscopy of an exfoliated PD07i cell (arrow) inside a FC. The cell is loosely attached above the BEC-layer and swept in a mesh of filamentous UTI89. Size bar=50 μ m.

Figure S2

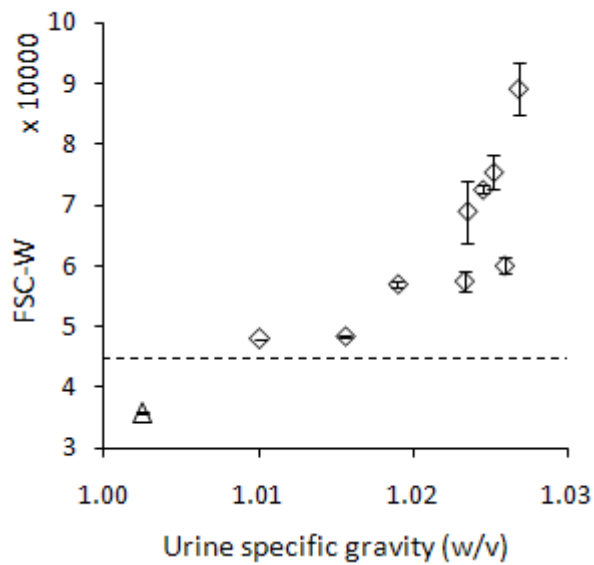


Figure S2. FSC-W values measured for bacteria harvested after secondary surface-colonization in urines of 10 different concentrations. 10^5 counts were collected for each sample and each point in the graph indicates mean value for two independent experiments with ± 1 SD. Dotted line indicates mean FSC-W value for agar-plated UTI89. Samples obtained using the most dilute urine differentiate from the other points in that these samples did not originate from visible surface colonization (see text) and hence are marked with a triangle.

Figure S3

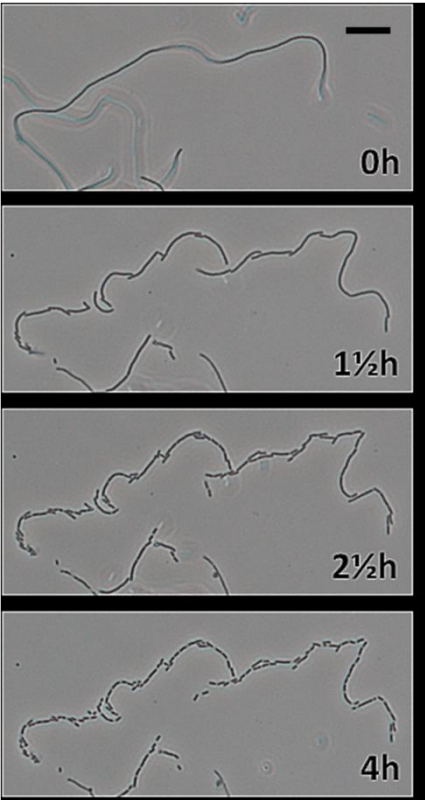


Figure S3. Reversal of a filament several hundred μm in length. Size bar= $20\mu\text{m}$.

Figure S4

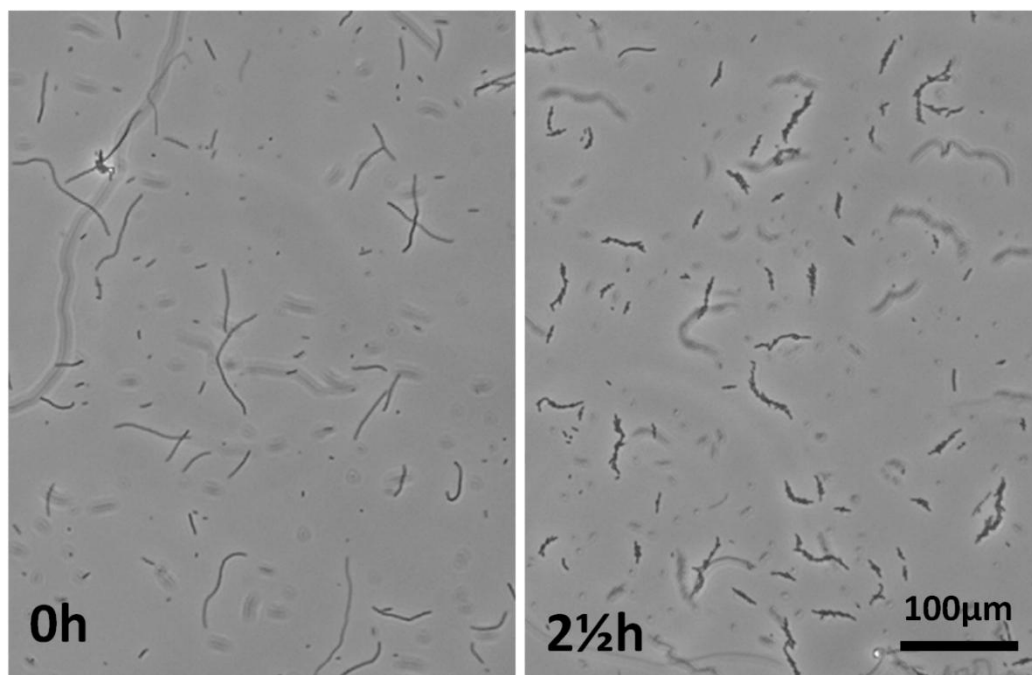


Figure S4. The majority of filaments revert to rods after harvest. Left picture shows a population of harvested filaments and right picture the same sample after 2½ hr at room temperature, with filaments/subfilaments septated into rods.