

Figure S1

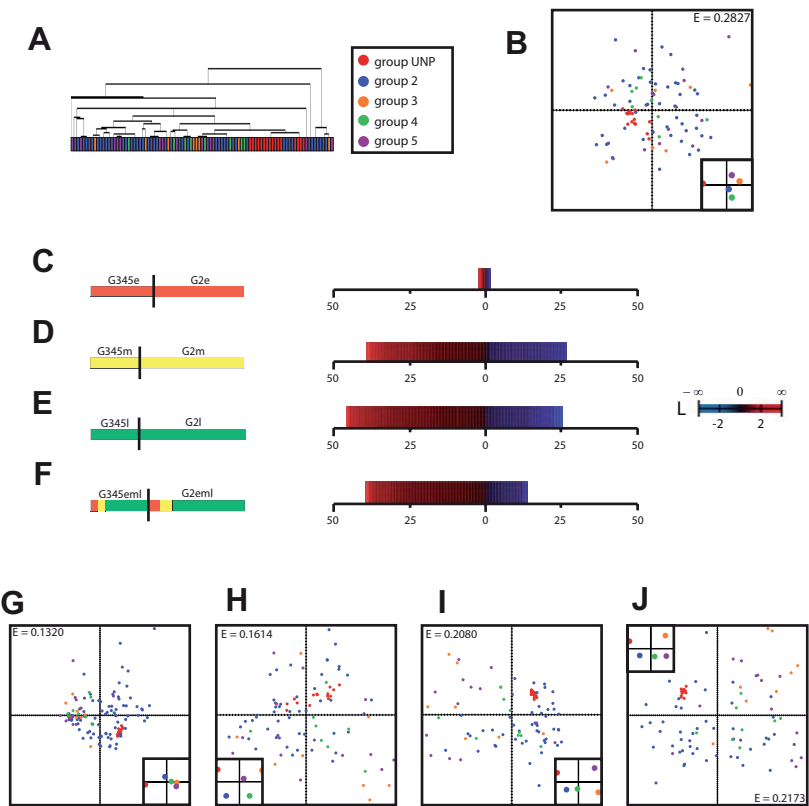


Figure S1. Categorical time-specific profiling of genes differentially expressed when comparing severe forms of liver disease with the corresponding time categories of asymptomatic patient biopsies. (A). Hierarchical clustering of the overall dataset but excluding samples after 24 months in group 2 computed over the entire set of genes. **(B).** SVD-MDS representation of the overall dataset but excluding samples after 24 months computed over the entire set of genes. Inlet shows the centers of gravity for the different groups. Coloring: see legend in (A). **(C).** Heatmap of the statistically significantly differentially expressed genes when comparing the "early" category of groups G3-G5 to the asymptomatic patients (G2). **(D).** Idem as (C) for the "intermediate" category. **(E).** Idem as (C) for the "late" category. **(F).** Idem as (C) for the combined "early", "intermediate", and "late" categories. **(G).** Idem as (F) for the G345e vs. G2e statistically differentially expressed genes (DEG). **(H).** Idem as (F) for the G345m vs. G2e DEG (without sample G5-M012-P038). **(I).** Idem as (F) for the G345l vs. G2e DEG. **(J).** Idem as (F) for the the G345eml vs. G2eml DEG (without sample G5-M012-P038).