

Supplemental Figure 1. Colony-forming units (CFU) analysis of WT and *Nlrc4*^{-/-} mice after *C. rodentium* infection. WT and *Nlrc4*^{-/-} mice were infected with *C. rodentium* at a dose of 4x10⁹ cfu/mouse. *Citrobacter* load in feces was measured by colony assay at day 10, 17 and 21. ** *p*<0.01 versus WT. Data represent means ± SEM (n=8/group) and are representative of two independent experiments.

Supplemental Figure 2. Splenomegaly development of inflammasome-deficient mice after *C. rodentium* infection. WT and *Casp1*^{-/-} mice were orally infected with *C. rodentium* at a dose of 4x10⁹ cfu/mouse. At day 14 and 21, mice were sacrificed and spleens were weighted. (A) Representative photograph of WT and *Casp1*^{-/-} mice spleen at 14 days after *C. rodentium* infection. (B) Spleen weight. **p*<0.05, ** *p*<0.01 versus WT. Data represent means ± SEM (n=8 mice/group) and are representative of three independent experiments.

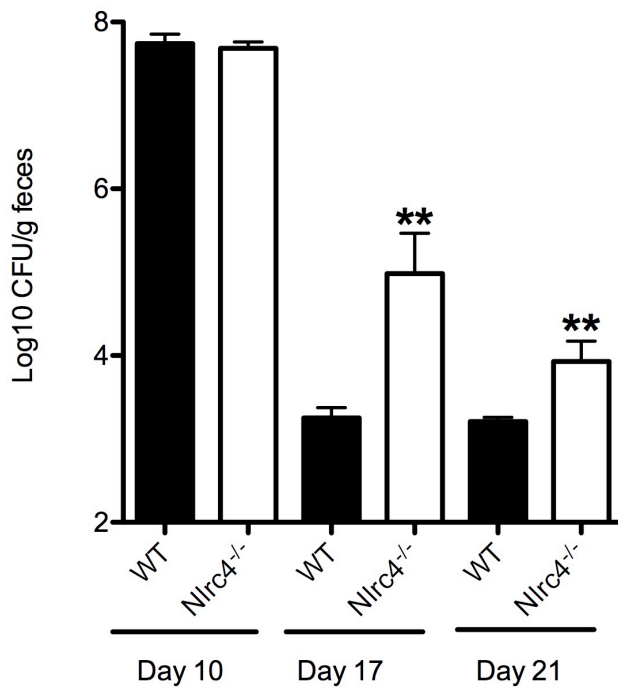


Figure S1

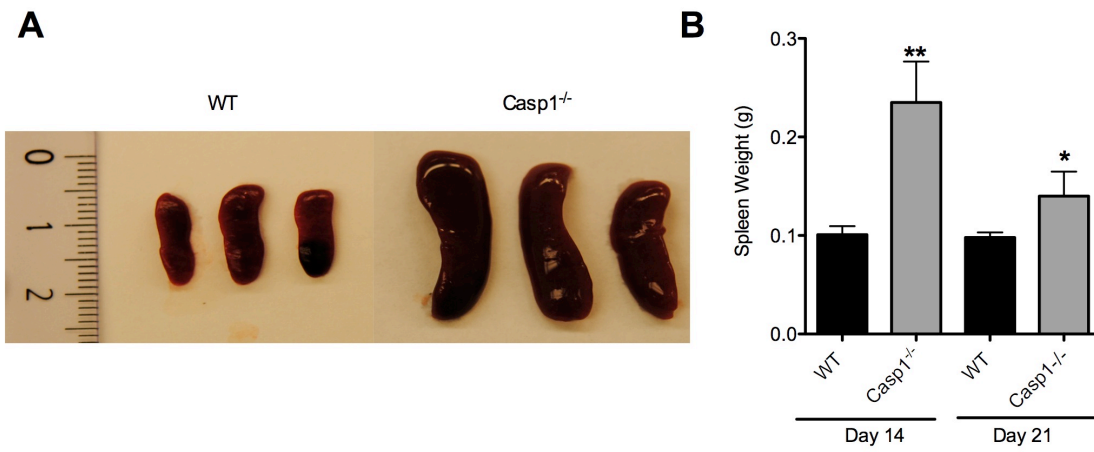


Figure S2