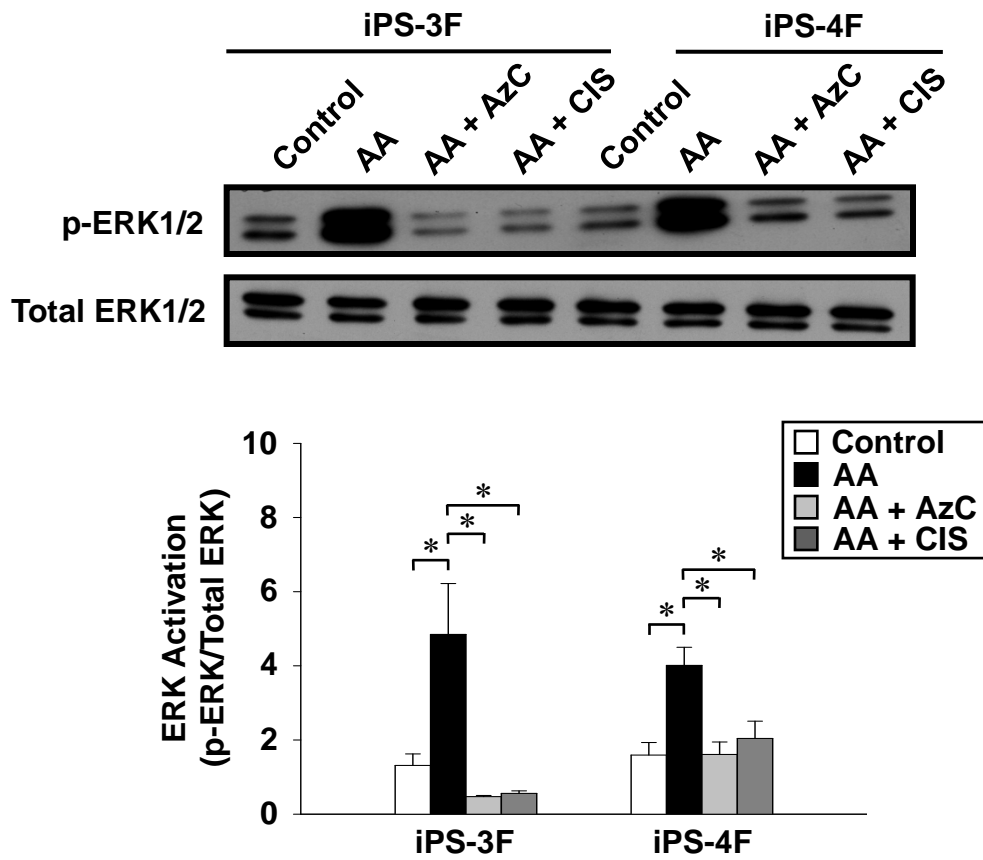


A

Supplementary Figure 10 AA activates ERK signaling in a collagen synthesis-dependent manner. The whole cell extracts at day-5 were analyzed by Western blot with phospho-specific antibodies against ERK1/2 (p-ERK1/2). The amounts of total ERK1/2 was shown as loading control. ERK activation is defined as the ratio of p-ERK/total ERK. Data are quantified from 5 assays and expressed as means \pm SEM. * $P < 0.01$ vs. corresponding values.