

Supplementary figure and figure legends

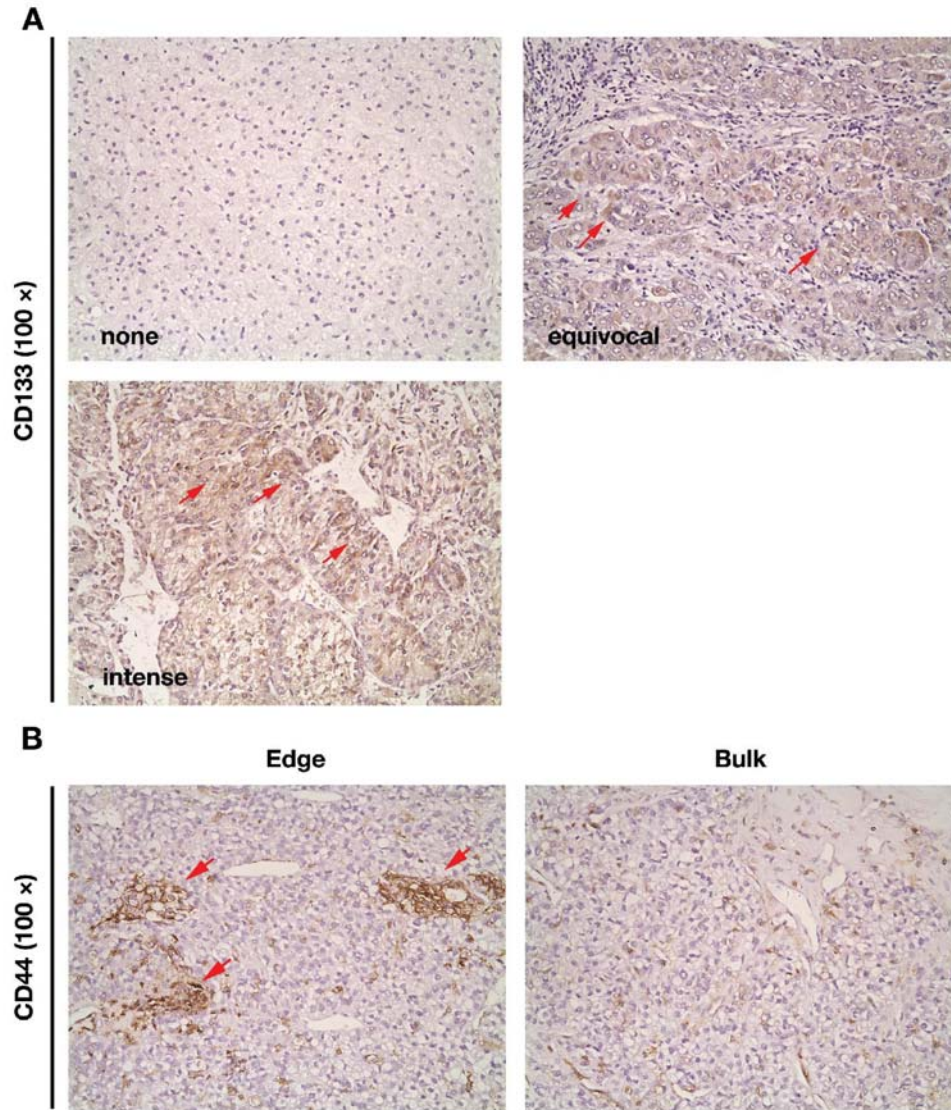


Fig. S1

**Figure S1:**

CD133 and CD44 staining in HCC specimens. (A) Representative images CD133 staining at the grade of none (*upper left*), equivocal (*upper right*), and intense (*lower left*) in HCC specimens ( $\times 100$ ). Arrows indicated CD133<sup>+</sup> tumor cells. (B) CD44 expression in the tumor bulk (*right*) or tumor edge (*left*) of metastatic HCC specimens ( $\times 100$ ). Arrows indicated CD44<sup>+</sup> tumor cells.