

Supplementary information, Figure S2

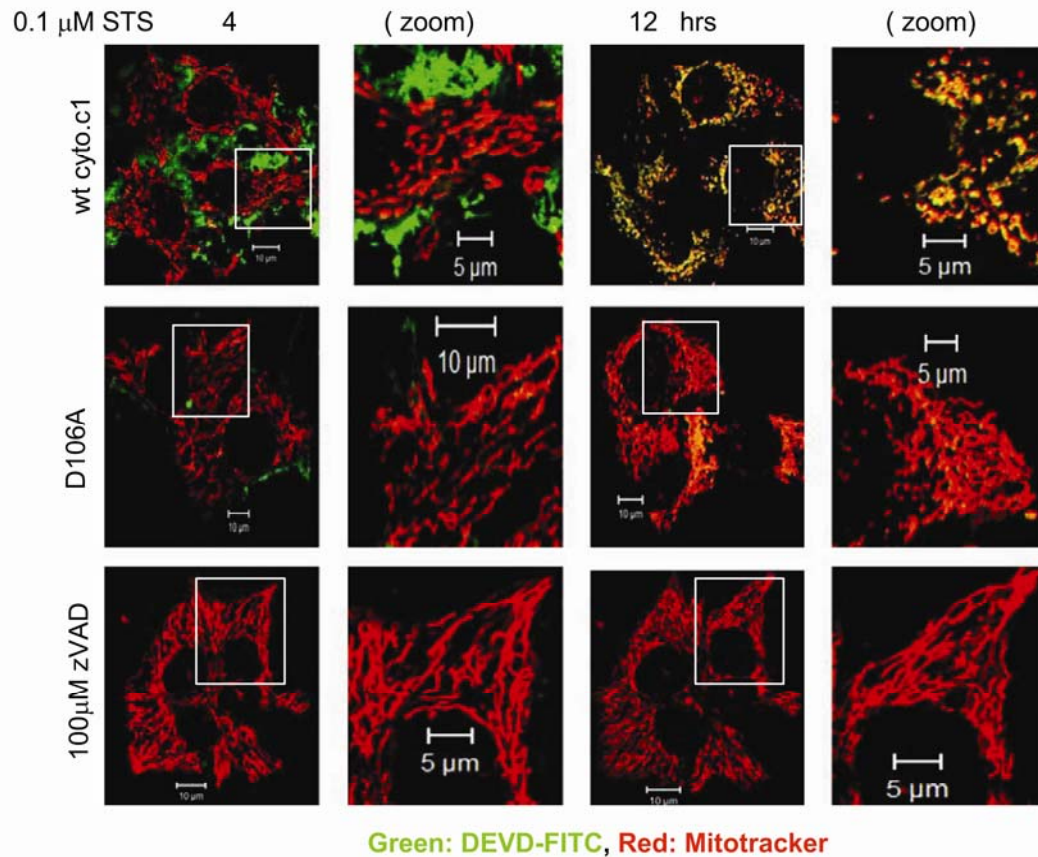


Figure S2 Confocal microscopic images caspase activation and mitochondrial morphology following staurosporine treatment. Cells were transfected with mitoDsRed for 24 h before treatment with staurosporine. Cells were then incubated with 10 mM DEVDase (green) for half an hour before washing with PBS. The simultaneous recording of mitochondrial morphology (red) and fluorescent images of activated caspases (green) by DEVDase (PhiPhiLux™) was carried out by a ZEISS LSM510 laser scanning confocal microscope system. Note that caspase activation (green) was detected in cells expressing wt cyto.c1, and it is significantly reduced in cells expressing non-cleavable cyto.c1 and cells treated with z-VAD. Also note that activated caspase is enriched in mitochondria (as shown by the yellow color in mitochondria) following the exposure to staurosporine, while the mitochondrial network maintained in cells expressing non-cleavable cyto.c1 and cells treated with z-VAD. Also see videos.