

Supplementary information, Figure S4

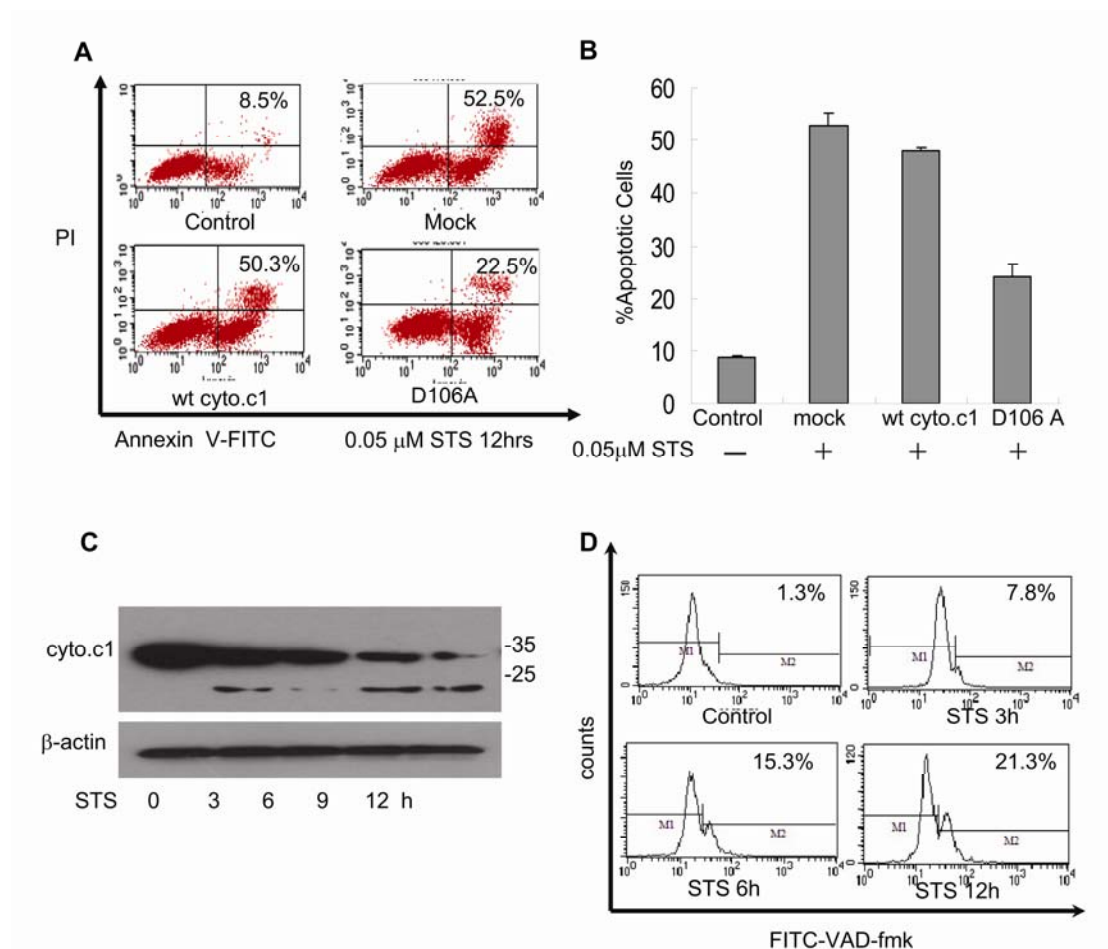


Figure S4 Cyto.c1 cleavage and caspase activation in rho 206 cells. Rho 206 cells were transfected with wt or mutant cyto.c1 and treated with 0.05 μ M staurosporine for the indicated times before flow cytometric analysis of apoptosis and western blotting of the cyto.c1 cleavage. **(A)** Flow cytometric analysis of apoptosis by FITC-annexin V kit. **(B)** Statistical results for staurosporine treatment for the indicated times. **(C, D)** Western blot detected the cyto.c1 cleavage **(C)** and flow cytometric analysis of caspase activity by the CaspACETM FITCVAD-FMK *in situ* Marker kit **(D)**.