

Supplementary information, Figure S5

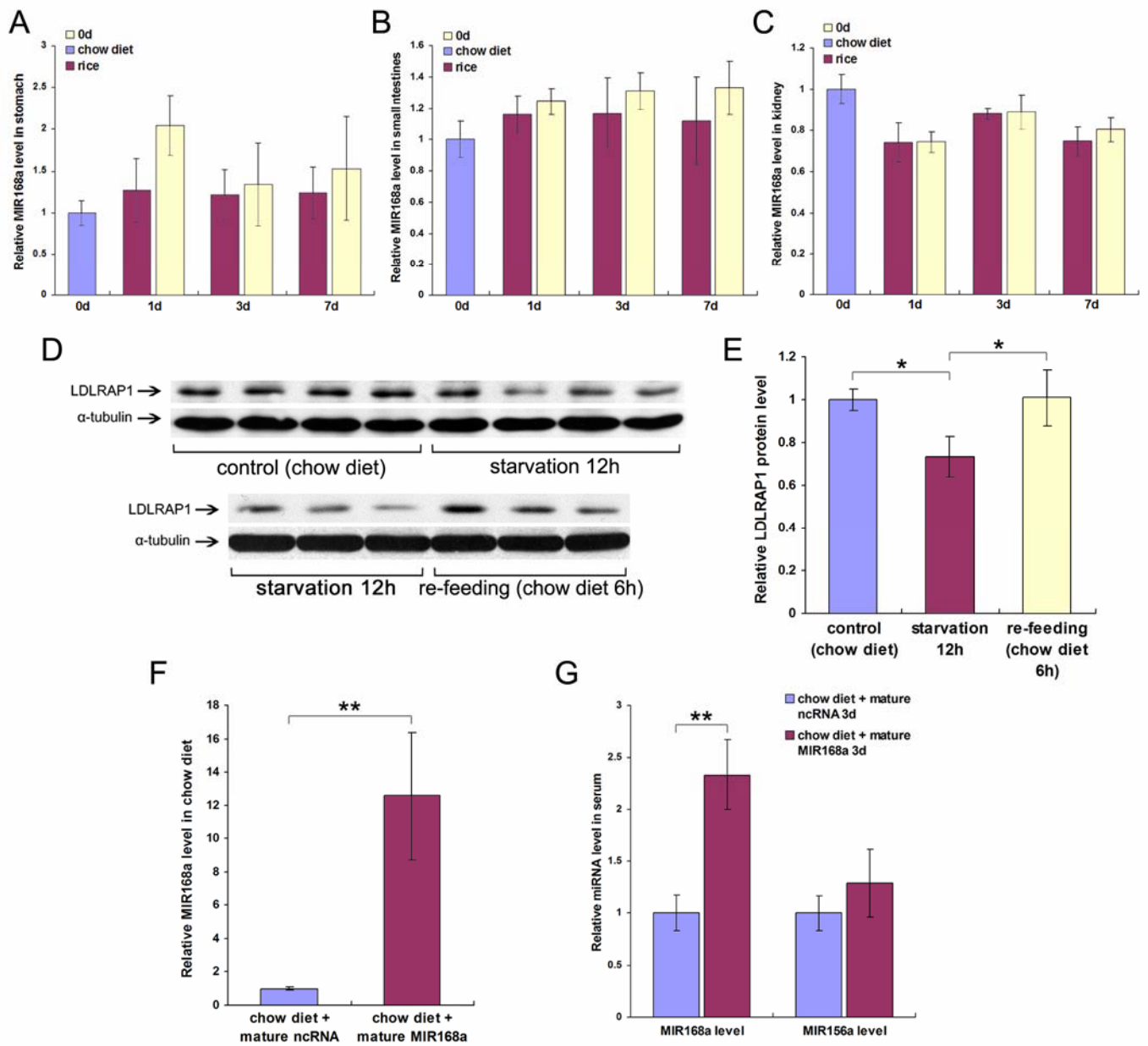


Figure S5 The levels of MIR168a in various mouse organs after chow diet or fresh rice feeding for sustained periods ($n = 8$). **(A)** The level of MIR168a in the stomach. **(B)** The level of MIR168a in the small intestine. **(C)** The level of MIR168a in the kidney. **(D)** The LDLRAP1 protein level in livers from chow diet-fed mice, 12-h fasting mice, and chow diet-re-fed mice. **(E)** The quantification of the LDLRAP1 protein expression in **D**. **(F)** Synthetic MIR168a was added to the chow diet, and qRT-PCR was used to analyze the level of MIR168a in the chow diet with the addition of MIR168a or ncRNA. **(G)** The relative levels of MIR168a or MIR156a in sera from mice fed with chow diet and either mature MIR168a or ncRNA for 3 d ($n = 8$). * $P < 0.05$; ** $P < 0.01$.