

Supplementary information, Figure S7

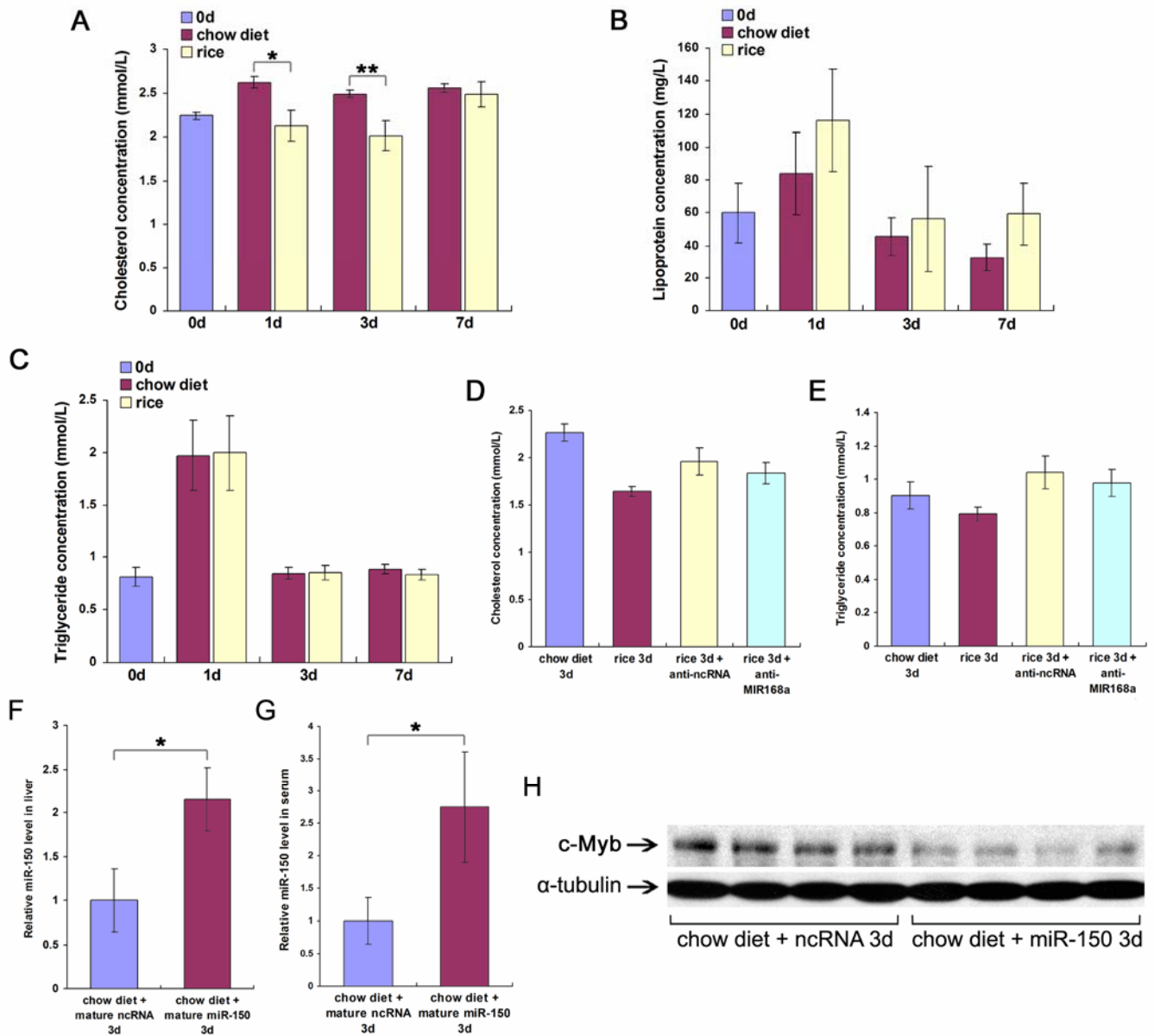


Figure S7 The effects of the rice-derived MIR168a and supplemental mature miR-150 in chow diet on mouse plasma cholesterol, lipoprotein, and triglycerides and liver c-Myb protein levels. **(A-C)** The levels of cholesterol **(A)**, lipoprotein **(B)**, and triglycerides **(C)** in mouse plasma after chow diet or fresh rice feeding ($n = 8$). **(D-E)** The levels of cholesterol **(D)** and triglycerides **(E)** in mouse plasma after 3 days of feeding with chow diet, fresh rice or fresh rice with an injection of anti-ncRNA or anti-MIR168a ($n = 8$). **(F-G)** The relative levels of miR-150 in mouse livers **(F)** and sera **(G)** after 3 days feeding with chow diet and either mature ncRNA or mature miR-150 for 3 days ($n = 8$). **(H)** The c-Myb protein levels in mouse livers after 3 days of feeding with chow diet and either mature ncRNA or mature miR-150 ($n = 8$). * $P < 0.05$; ** $P < 0.01$.