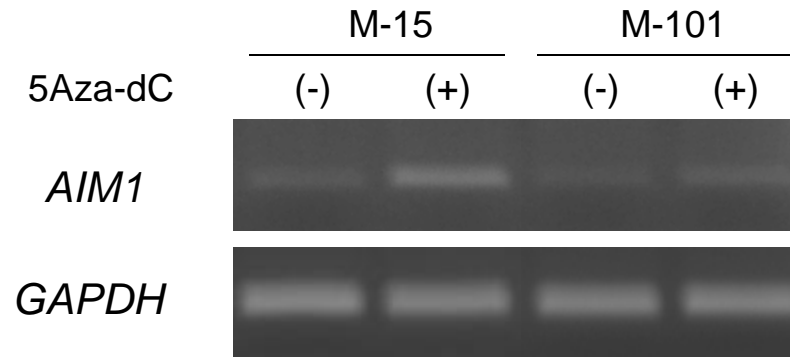
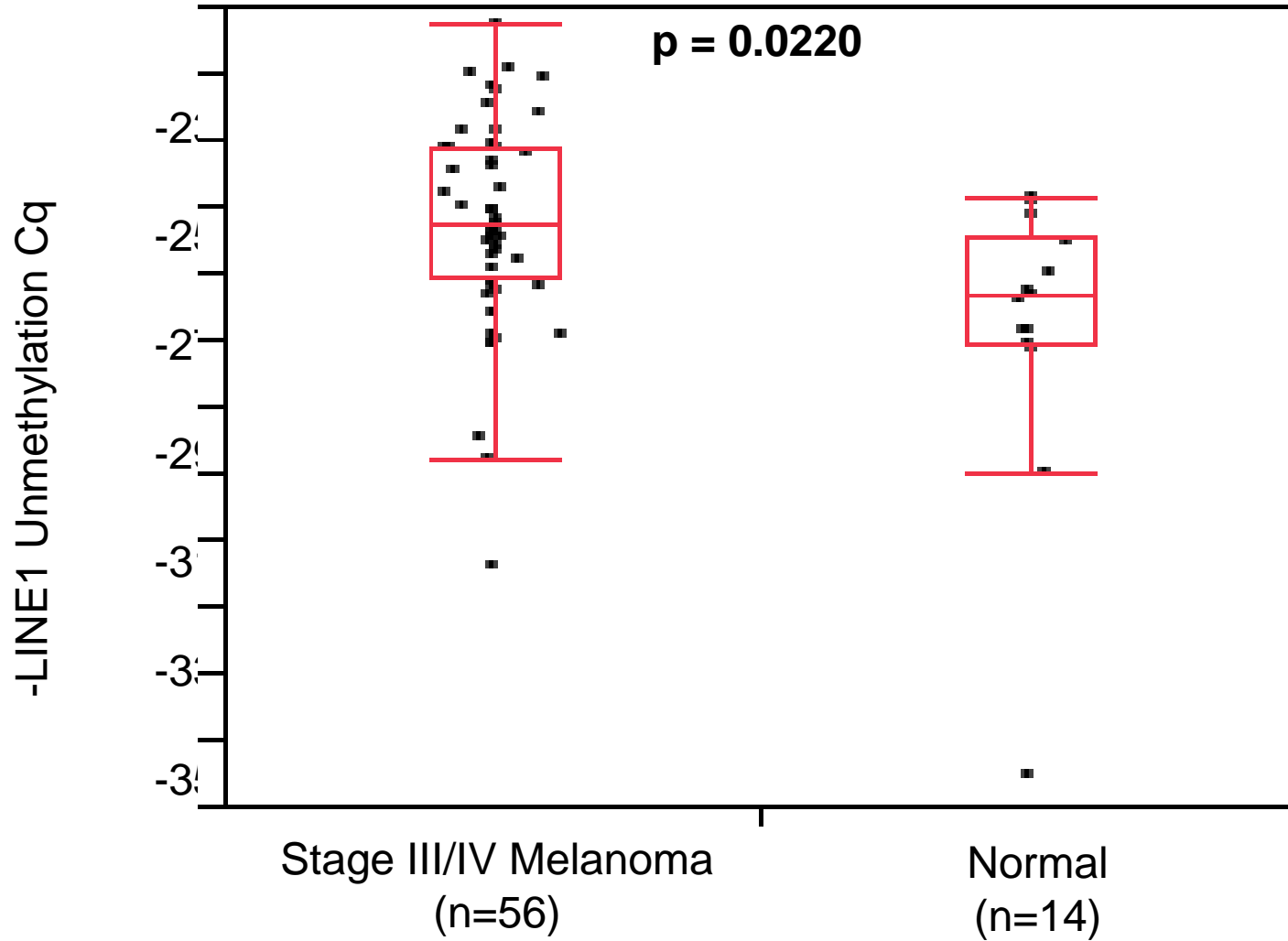


# Supplementary Figure 1

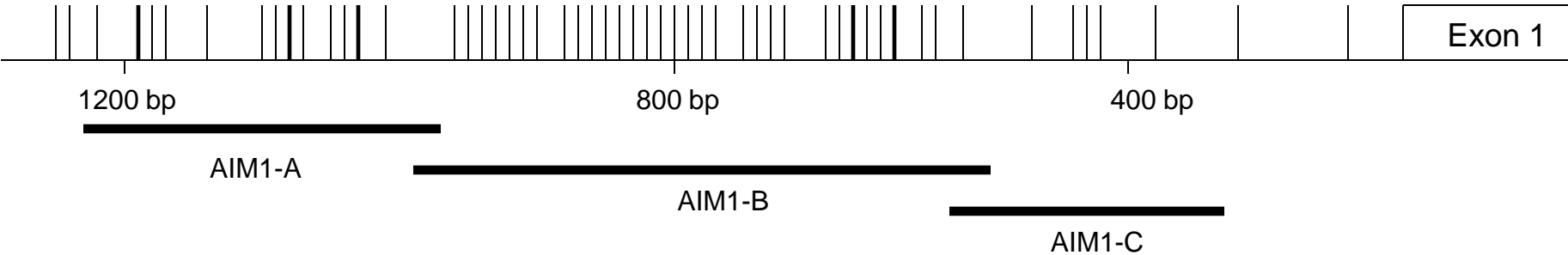




# Supplementary Figure 3



# Supplementary Figure 4



Primer	Forward Primer	Reverse Primer	PCR product (bp)	Covered CpG
AIM1-A	TTGGTTTGGTTTTAGAGGAGTT	AAAAAAAAACCTAAACTTCTTATATCTC	292	13
AIM1-B	TGTTTTAGGAGATATAAGAAGTTTAGG	CTCCAAAACAATAAAAAACCAC	484	34
AIM1-C	ATGTTGAATTTAGGTGGTTTTTTA	AAAATAAATAATTCCTTACCCTCTCT	240	4

## SUPPLEMENTARY FIGURE LEGENDS

**Supplementary Figure 1.** Expression patterns of *AIM1* mRNA in melanoma cell lines, M-15 and M101, treated with 5Aza-dC. (-) is control medium treated only, (+) 5Aza-dC treated.

**Supplementary Figure 2.** *AIM1* mRNA expression in melanoma tissues. Stage I primaries are unmethylated for *AIM1* while the stage IV metastases have high *AIM1* hypermethylation.

**Supplementary Figure 3.** Unmethylated LINE-1 circulating DNA in serum of normal healthy donor and melanoma patients.

**Supplementary Figure 4.** Schematic representation of *AIM1* promoter region showing CpG sites(vertical lines) and three bisulfite converted amplicons for MALDI-TOF MS (*AIM1*-A, B, C). The lower **Table** shows primer sequences.