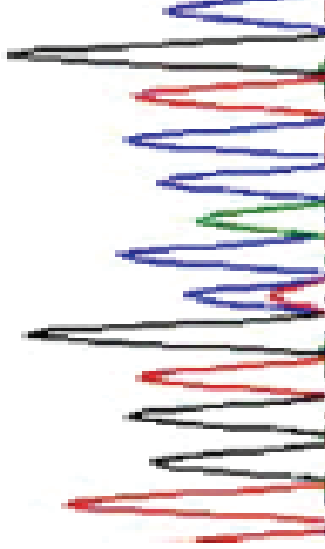


SUPPL. FIGURE 1

**GBM SF268
(EGFR-A289V)**

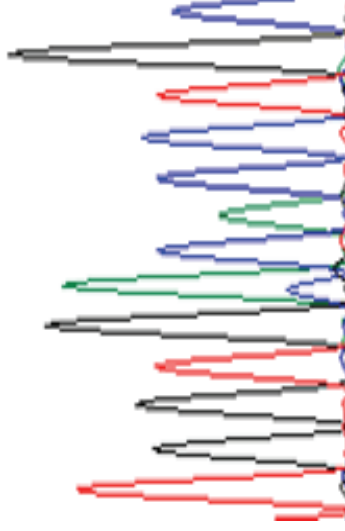
Forward



C/T

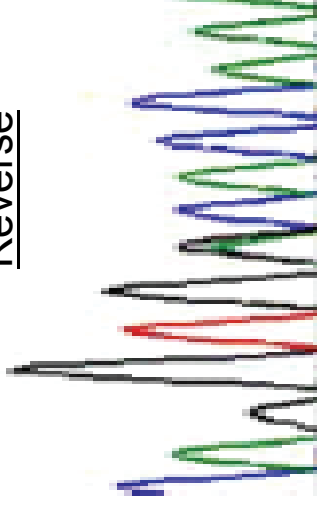
**GBM SKMG3
(EGFR-A289D)**

Forward



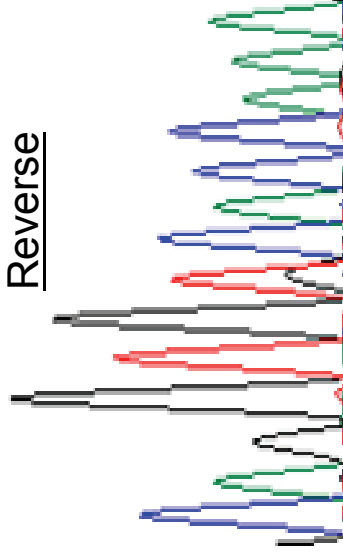
C/A

Reverse



G/A

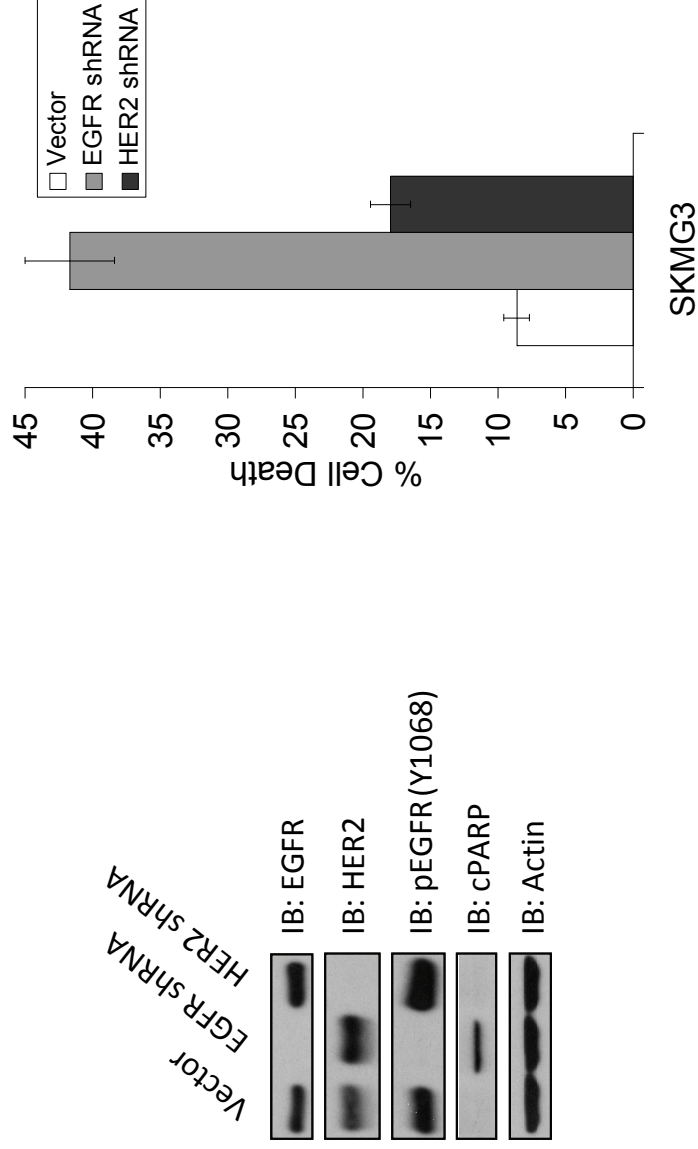
Reverse



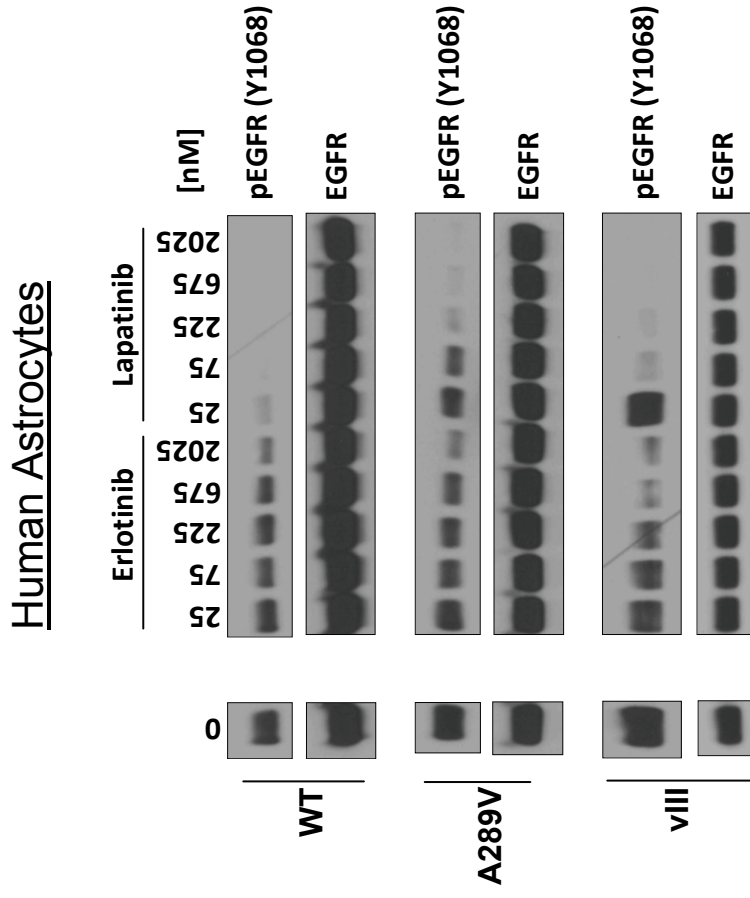
G/T

SUPPL. FIGURE 2

SKMG3 (EGFR A289D)



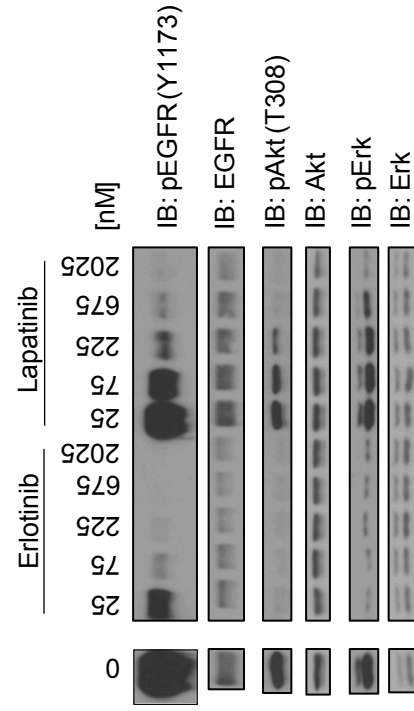
SUPPL. FIGURE 3



SUPPL. FIGURE 4

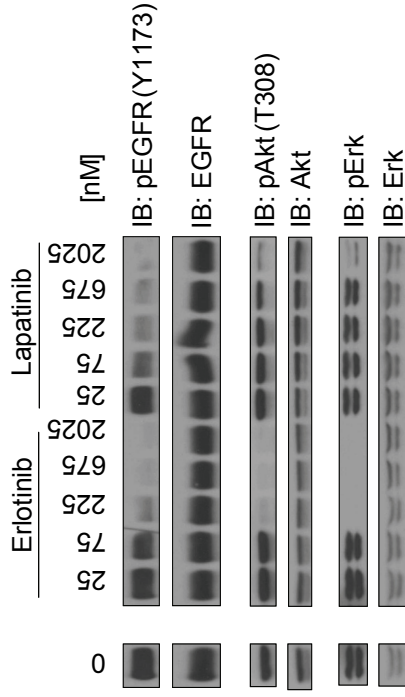
A

L858R EGFR
(H3255 Lung Ca)



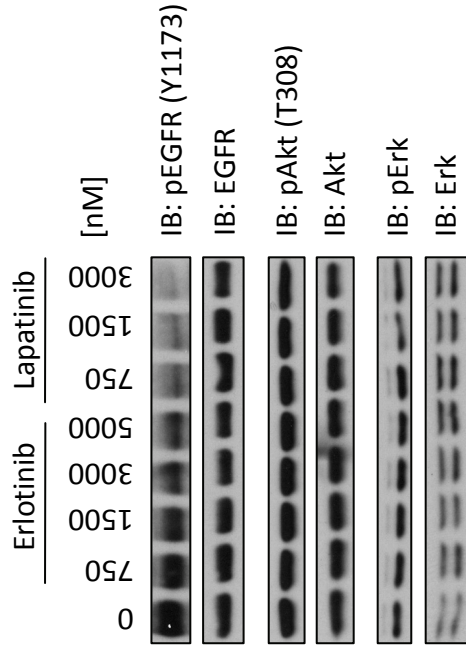
B

EGFR Δ 747-749
(HCC4006 Lung Ca)

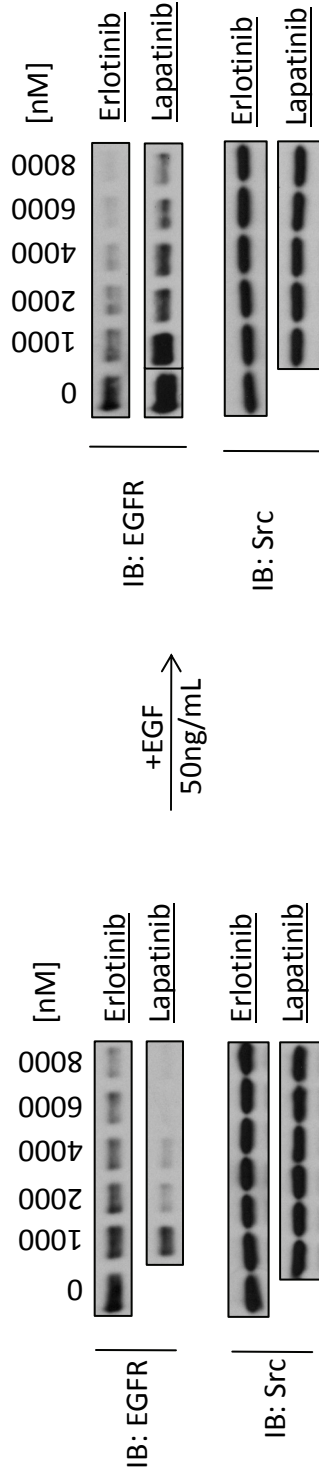


C

A289D EGFR
(SKMG3 GBM)

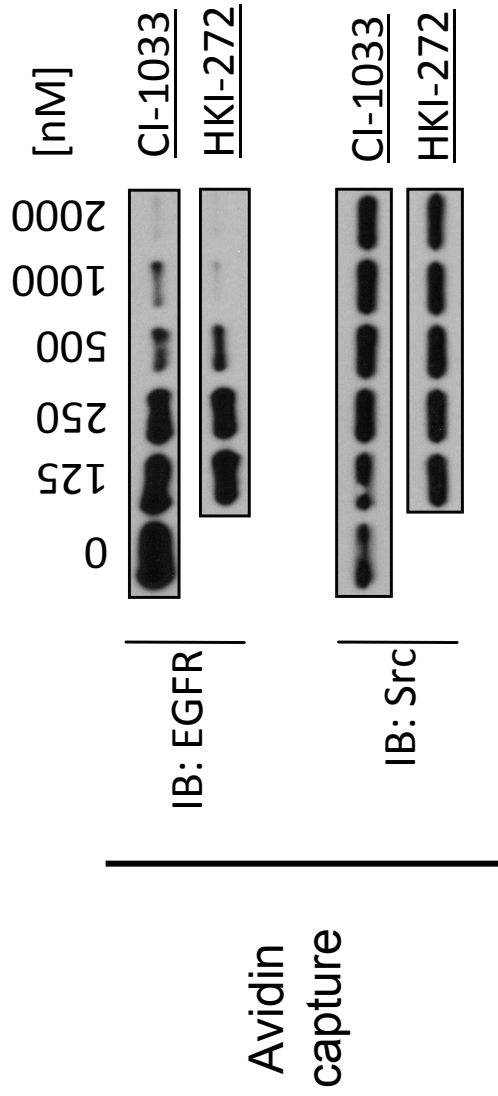


SUPPL. FIGURE 5



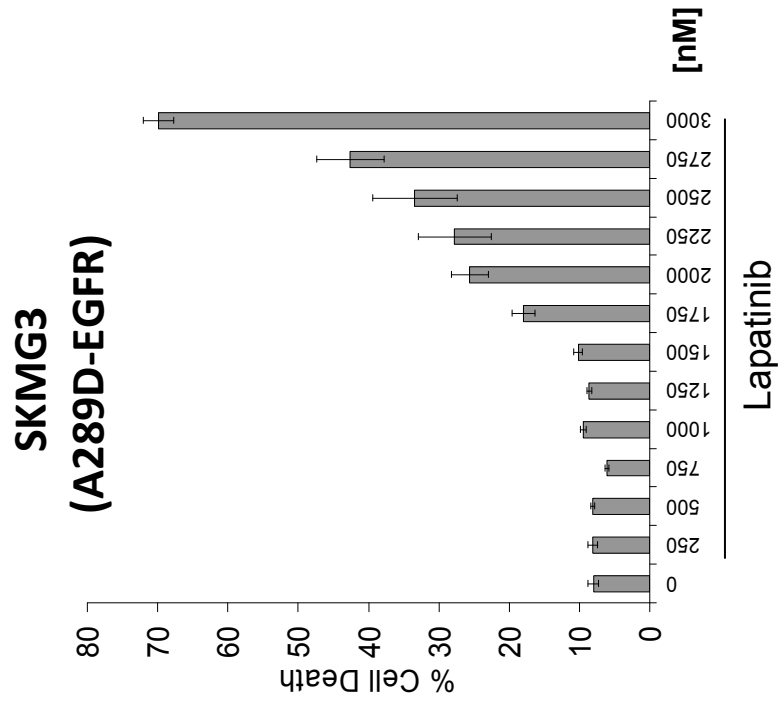
NR6-EGFR-A289D

SUPPL. FIGURE 6

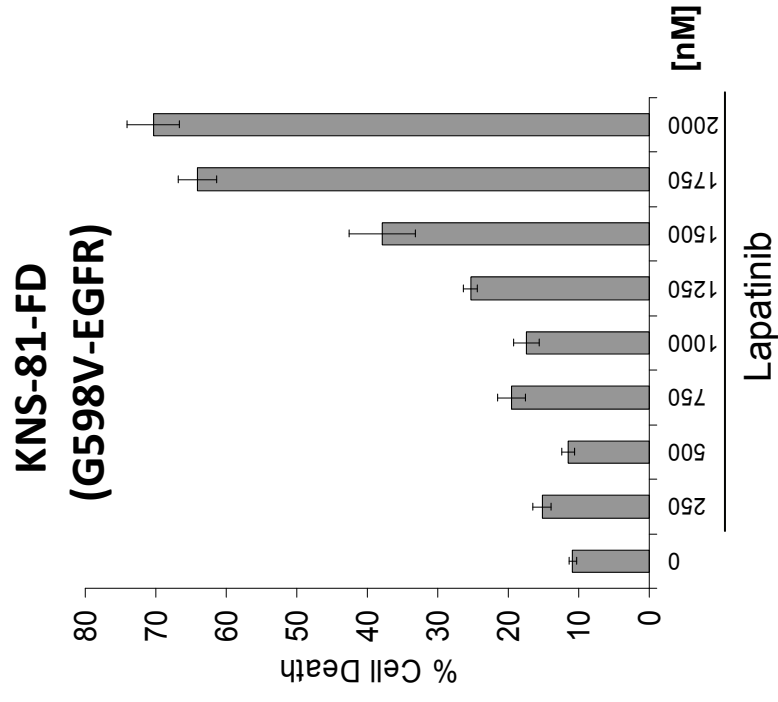


SUPPL. FIGURE 7

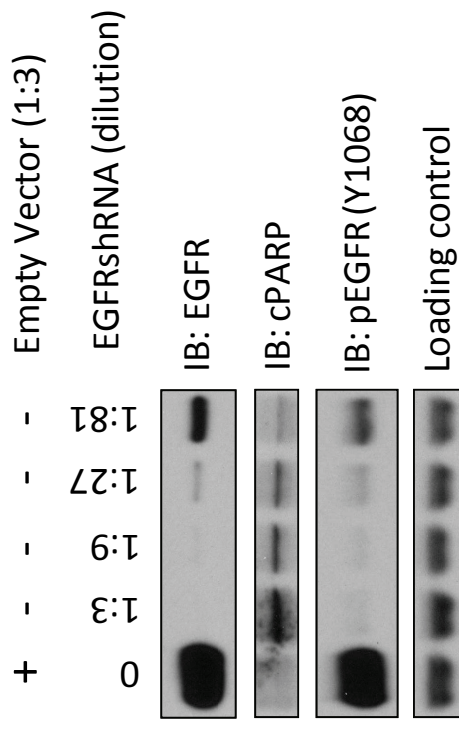
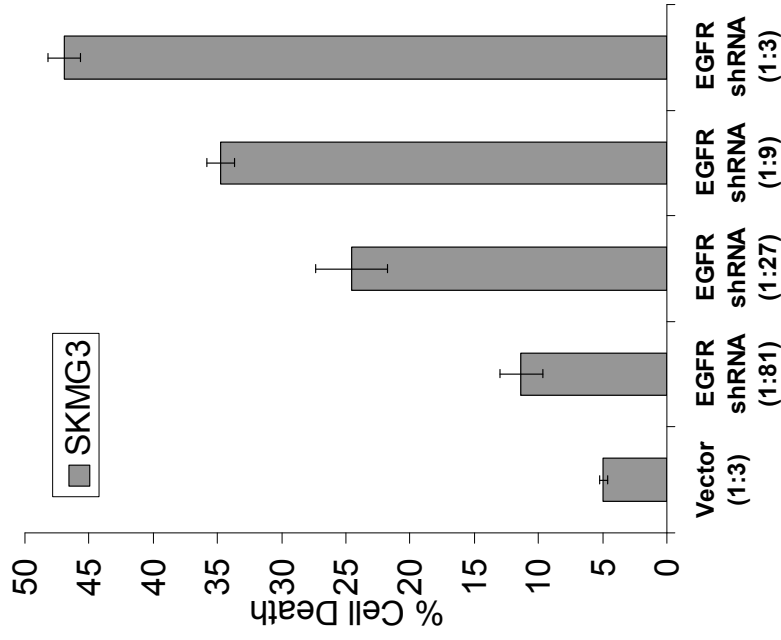
A



B

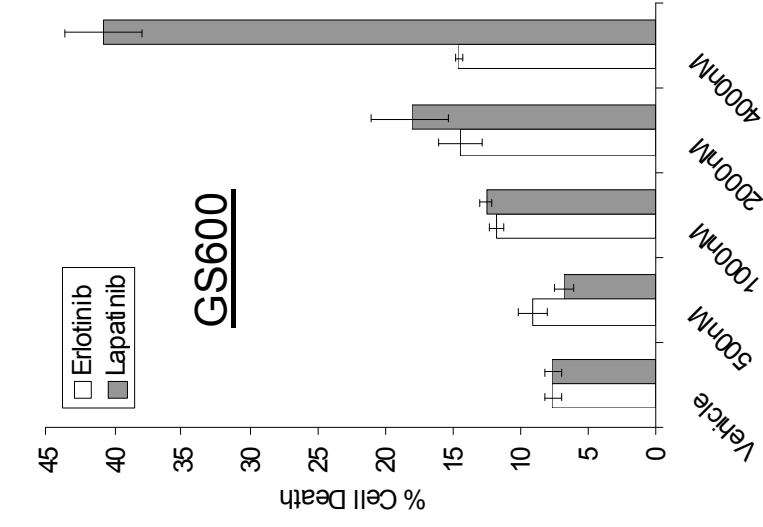
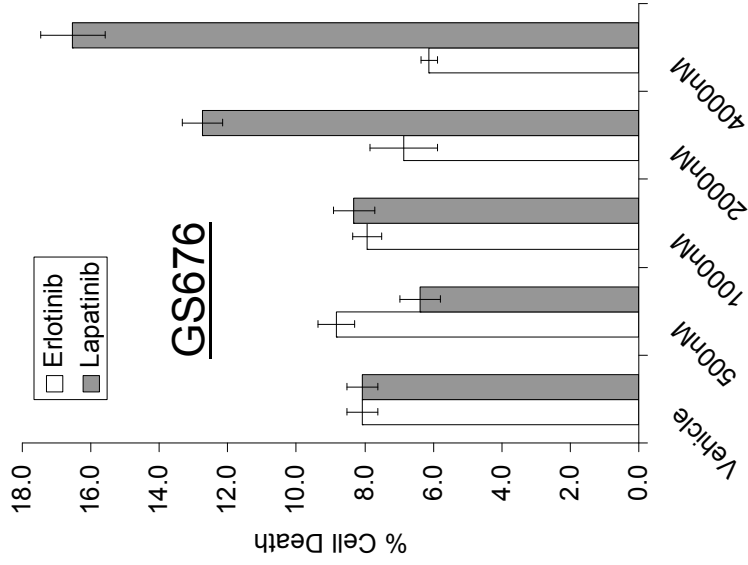


SUPPL. FIGURE 8

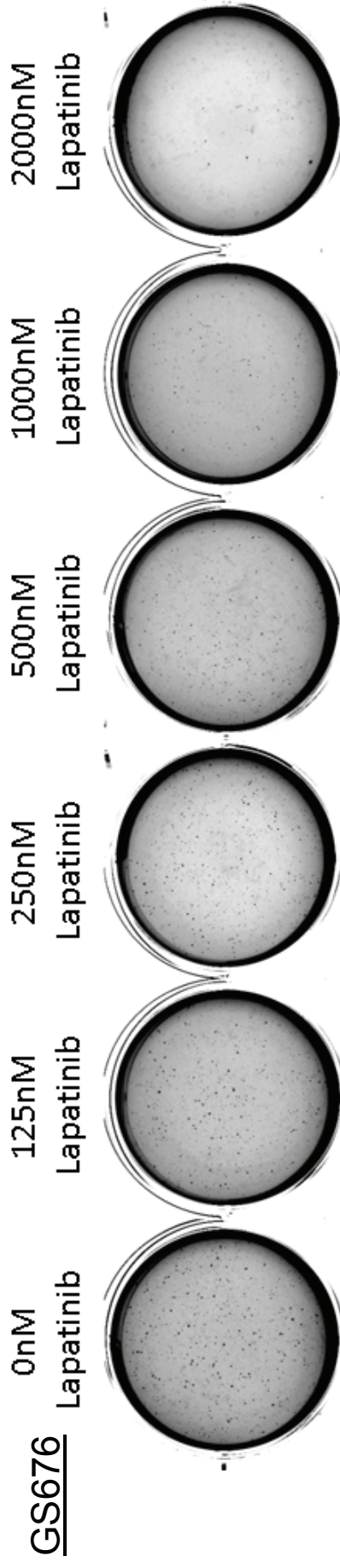


SUPPL. FIGURE 9

A



C



SUPPL. FIGURE 10

