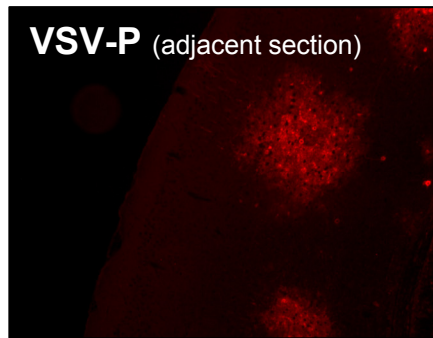
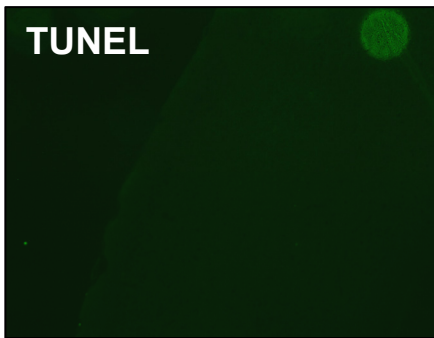
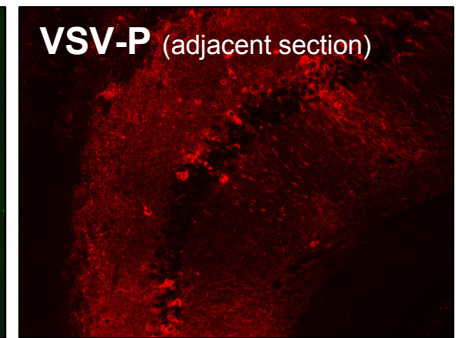
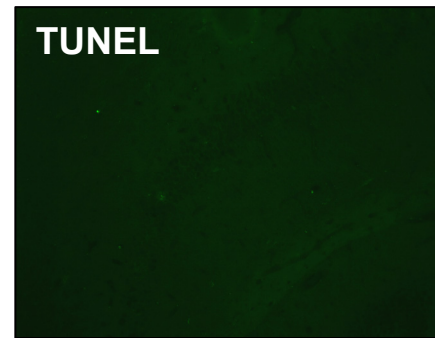


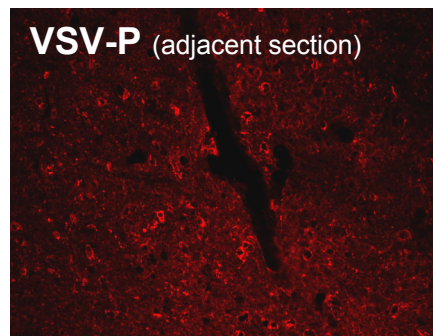
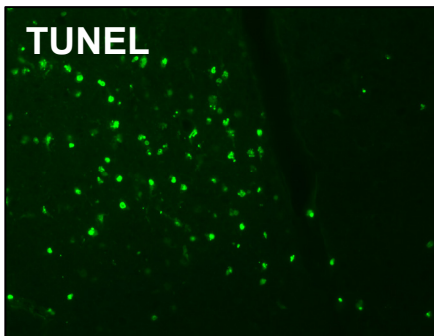
cortex (100x)



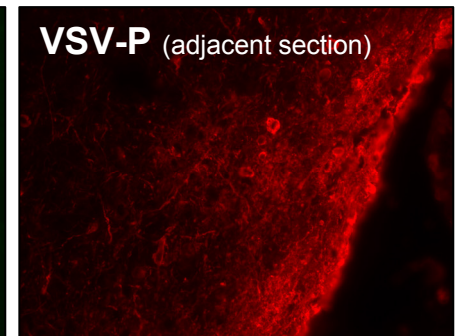
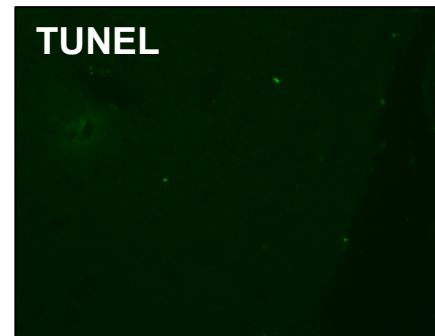
hippocampus (100x)



ventral striatum (200x)



at 4th ventricle (200x)



brain stem (200x)

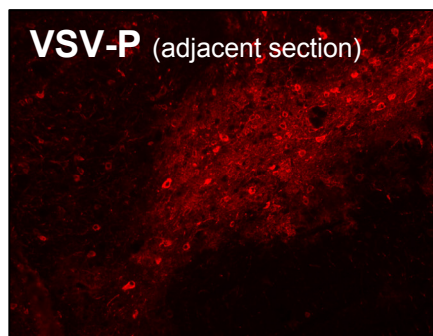
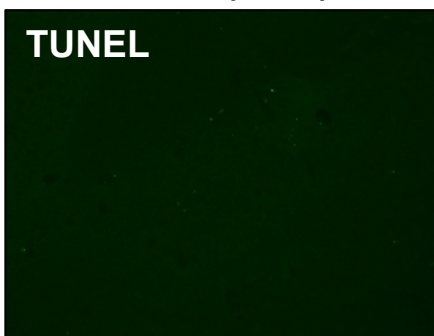


Figure S4. Region-selective induction of apoptosis in brains of intranasally VSV-infected *Ifit2*^{-/-} mice. *Ifit2*^{-/-} mice were i.n. infected with 4×10^2 pfu of VSV; at 6 d.p.i., adjacent sections of fixed brains were labeled to detect apoptotic cells (TUNEL) or VSV P protein (immunohisto-fluorescence), n=2 mice; only few regions such as striatum show positive TUNEL; infected wt brains and uninfected control brains of either genotype did not show appreciable signals, hence data not shown).