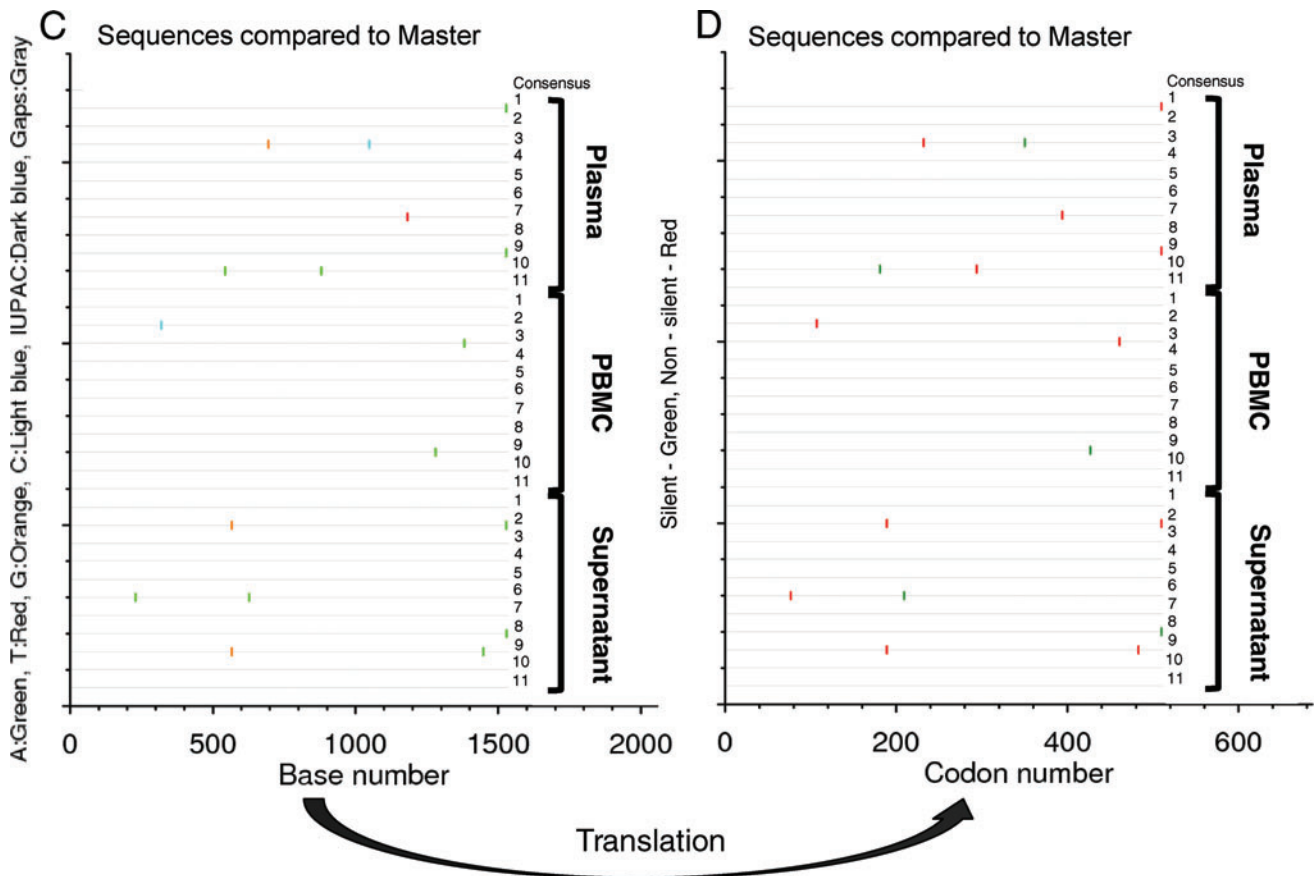
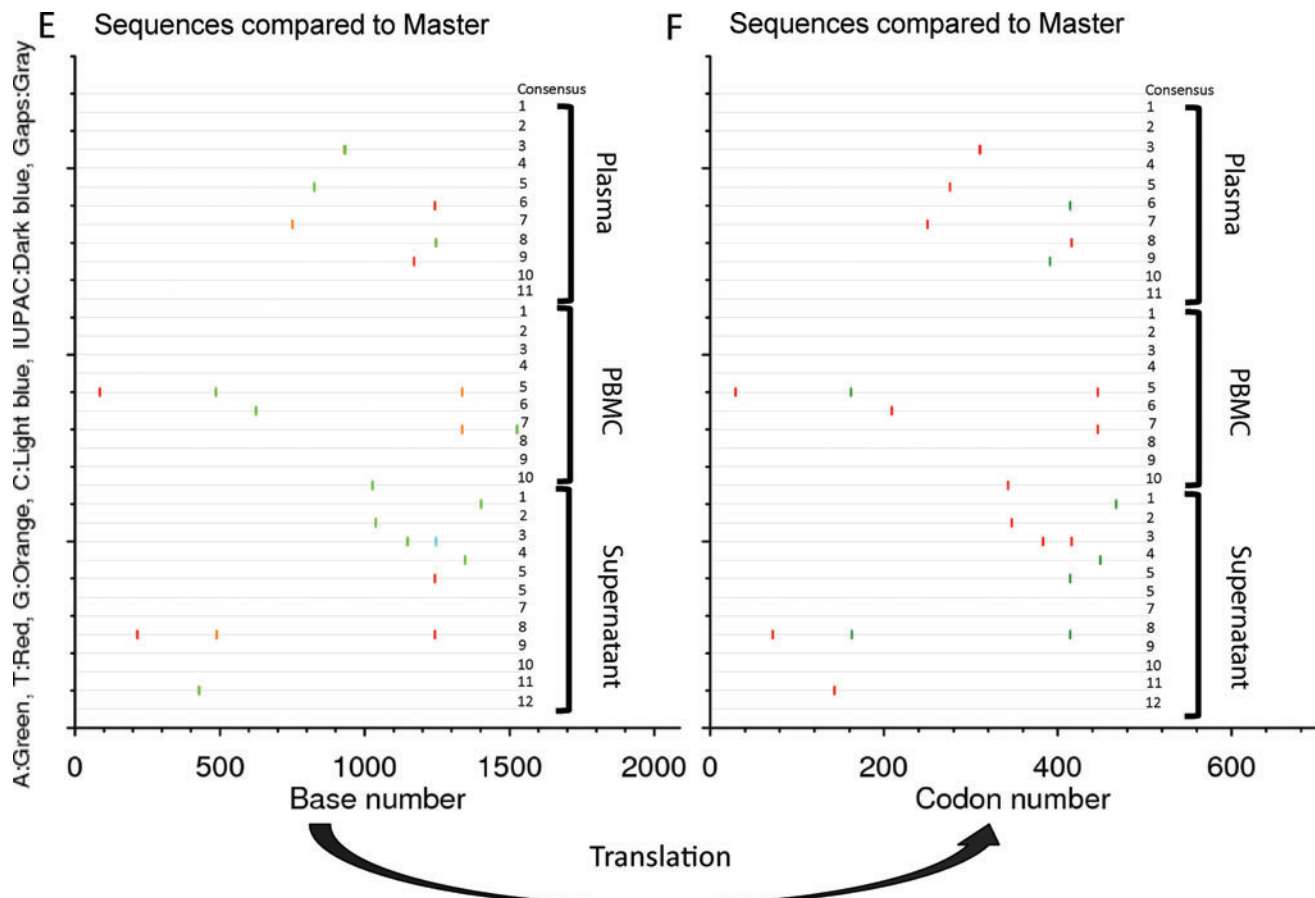


Supplementary Data



SUPPLEMENTARY FIG. S3A. Comparison of viral sequences from plasma and derived cultured virus from a Fiebig Stage V virus isolate (BP00008) from South Africa. The envelope sequence analysis of original plasma and virus cultures from supernatant or PBMC of original isolate as described in Figure 2 was carried out on 10–12 separate sequences of the respective virus preparations. Point mutations in each sequence are designated by a colored marker to indicate specific mutation type (Panel A). The observed mismatches mostly led to codon changes (Panel B).



SUPPLEMENTARY FIG. S3B. Comparison of viral sequences from plasma and derived cultured virus from a Fiebig Stage V virus isolate (BP00067) from the United States. The envelope sequence analysis of original plasma and virus cultures from supernatant or PBMC of original isolate as described in Figure 2 was carried out on 10–12 separate sequences of the respective virus preparations. Point mutations in each sequence are designated by a colored marker to indicate specific mutation type (Panel A). The observed mismatches mostly led to codon changes (Panel B).