

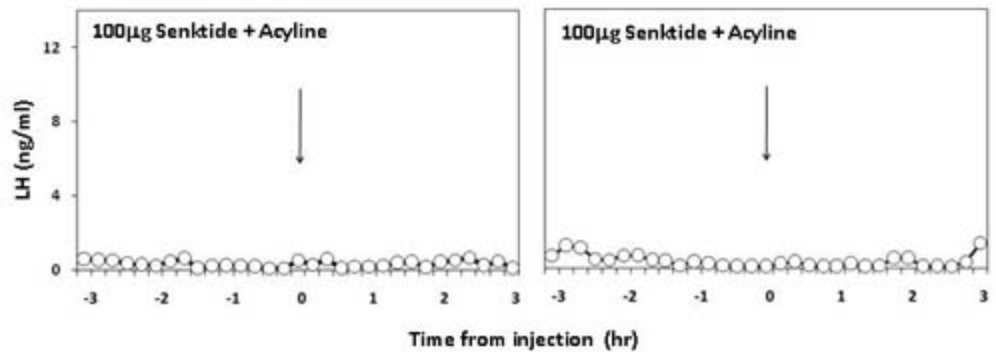
Supplemental Figure Legends:

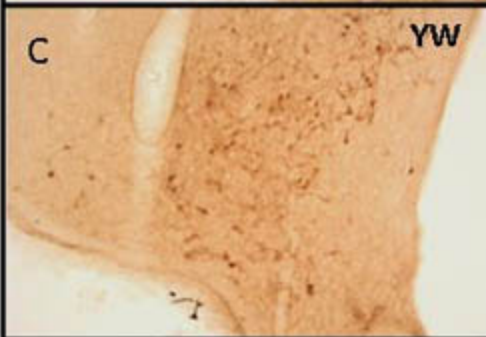
Figure 1. LH profiles from individual prepubertal ewes that were treated with acyline and 100µg senktide. Arrows indicate time of IV injection of senktide.

Figure 2. Photomicrographs of kisspeptin-positive neurons in the caudal portion of the ARC from representative young and older males that were intact (A, B) or gonadectomized (C, D). (young ram [YR]; young wether [YW]; older ram [OR]; older wether [OW]). Bar, 200µm.

Figure 3. Photomicrographs of kisspeptin immunoreactivity in the POA for an older (>3yrs) adult OVX ewe (A, B) and younger (11 months) EF ewe (C, D). 4x magnification (A, C). 10x magnification (B, D). Bar, 200µm.

Figure 4. Photomicrographs of NKB-positive neurons in the caudal portion of the ARC from representative young and older males that were intact (A, B) or gonadectomized (C, D). (young ram [YR]; young wether [YW]; older ram [OR]; older wether [OW]). Bar, 200µm.



A**YR****B****OR****C****YW****D****OW**

A**Adult****B****Adult****C****Young EF****D****Young EF**

9

A**YR****B****OR****C****YW****D****OW**