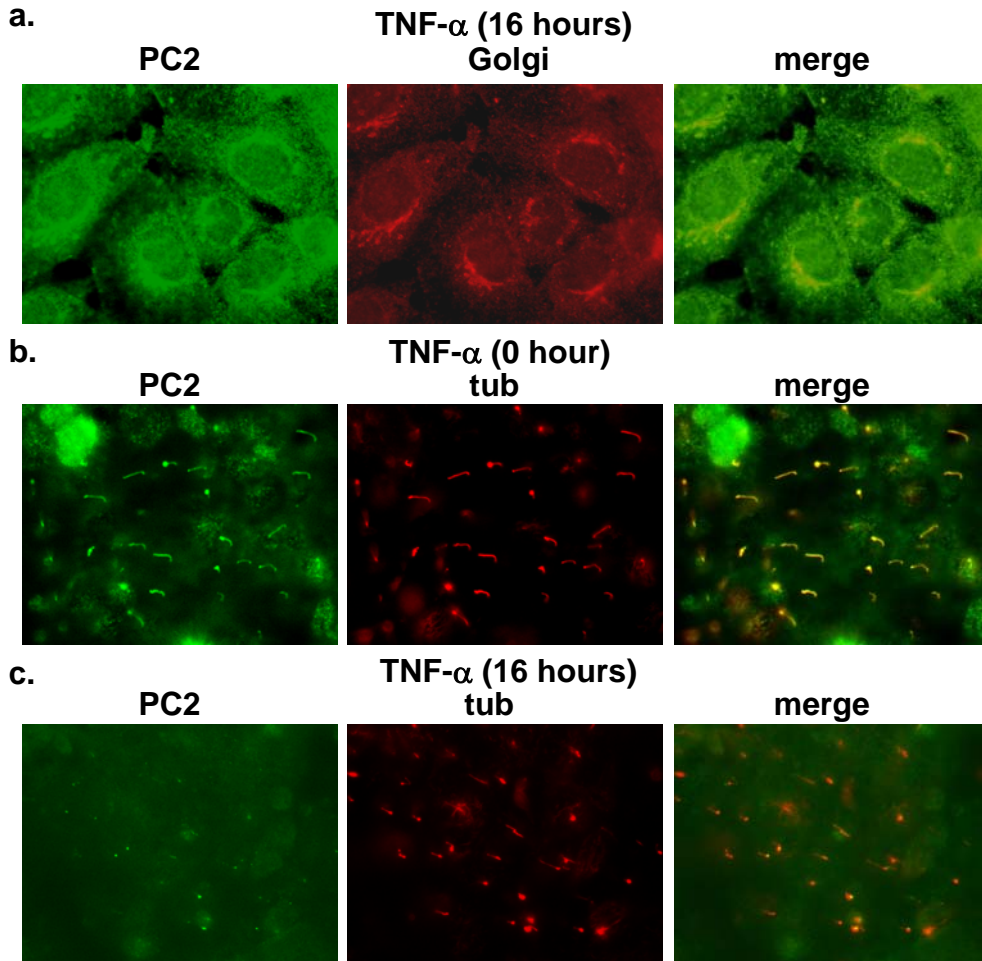


# A Tumor Necrosis Factor-Alpha-Mediated Pathway Promoting Autosomal Dominant Polycystic Kidney Disease.

Xiaogang Li, Brenda S. Magenheimer, Sheng Xia, Teri Johnson, Darren P. Wallace, James P. Calvet and Rong Li



## Supplemental Figure 1. TNF- $\alpha$ signaling disrupts PC2 cilia localization in IMCD cells.

**a**, After TNF- $\alpha$  treatment PC2 was strongly enriched in perinuclear regions that partially overlapped the Golgi marker, GM-130. **b, c**, Double immunofluorescence staining of endogenous PC2 (*green*) using the YCC2 anti-PC2 antibody and acetylated tubulin (*tub*, *red*) before (b) or after (c) treatment with TNF- $\alpha$  for 16 hr, observed with confocal microscopy. TNF- $\alpha$  stimulation results in the loss of PC2 localization along the primary cilia, however, with this antibody PC2 can still be detected in the basal body regions in some of the treated cells.