

Supplementary Figure S3: Amount of infected human neuroblastoma cells seven days after infection. SK-N-SH cells were infected (m.o.i.=0.01) with (a) DUVV-NL07, (b) RABV-PV and (c) SHBRV-18 and stained with anti-NP FITC antibody.

Figure S3a

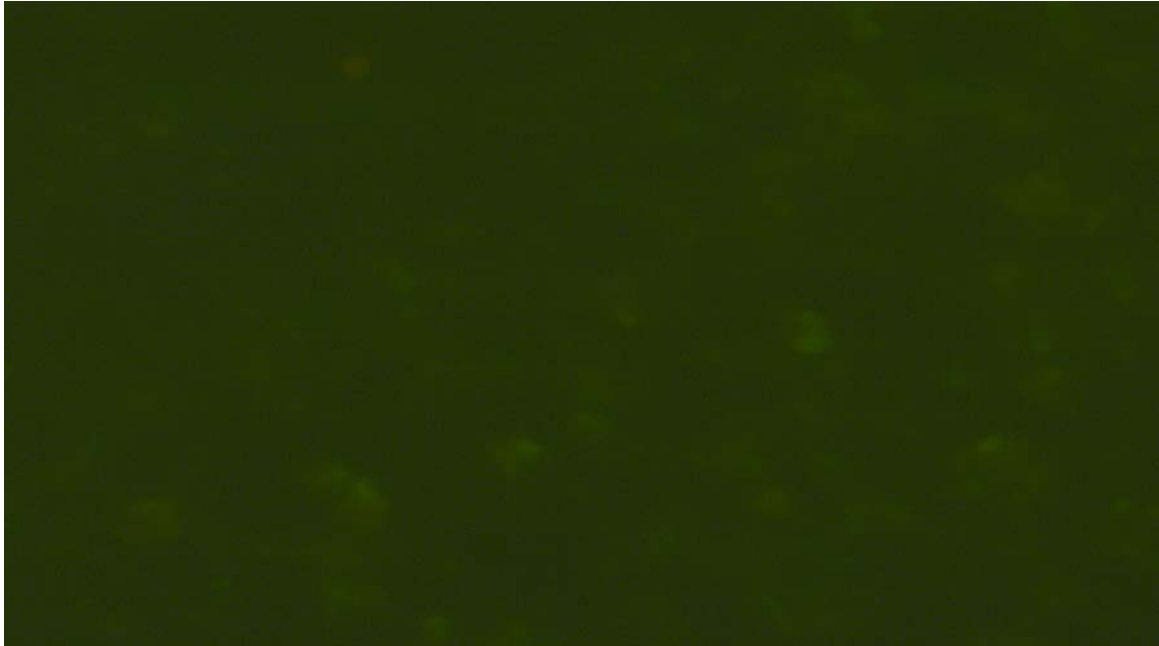


Figure S3b

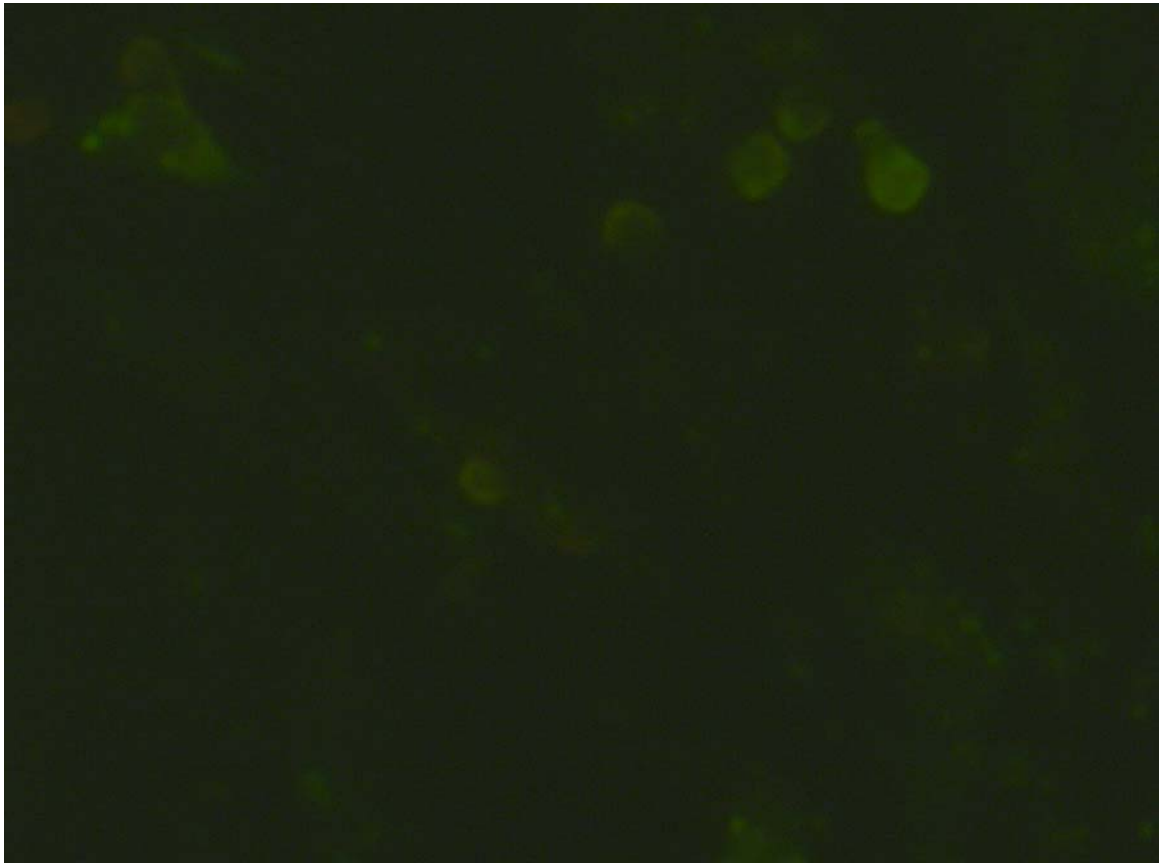


Figure S3c

