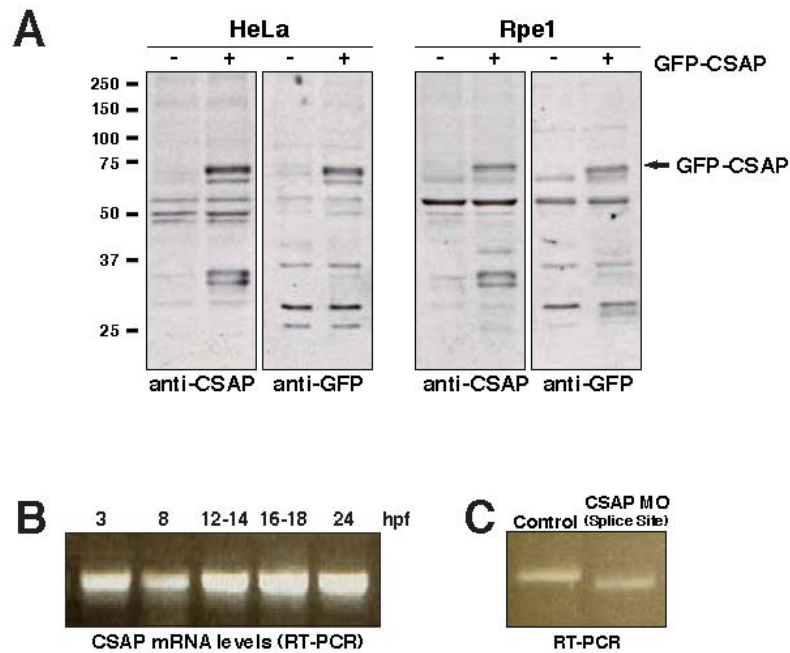


Supplemental Figures

Supplemental Figure 1



Supplemental Figure 1. Analysis of CSAP antibody and morpholino specificity. (A) Western Blot indicating CSAP antibody specificity. HeLa and hTERT-RPE1 cells +/- GFP-CSAP expression were harvested and blotted with anti-CSAP antibodies. Arrow indicated a CSAP specific band from both types of cells stably expressing GFP-CSAP. (B) RT-PCR from wild type embryos assessing RNA levels from 3 to 24 hpf embryos. CSAP is expressed maternally and zygotically. (C) RT-PCR from Control MO with p53 MO and CSAP MO with p53 MO injected embryos. mRNA levels indicate a decreased amplicon size due to an incorrect splicing event.