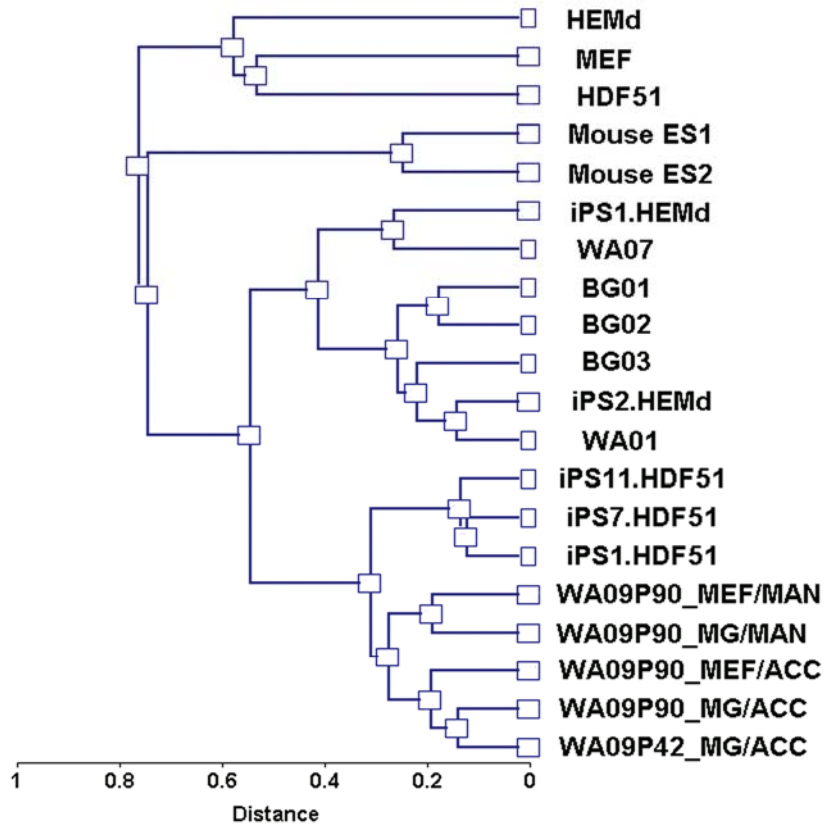
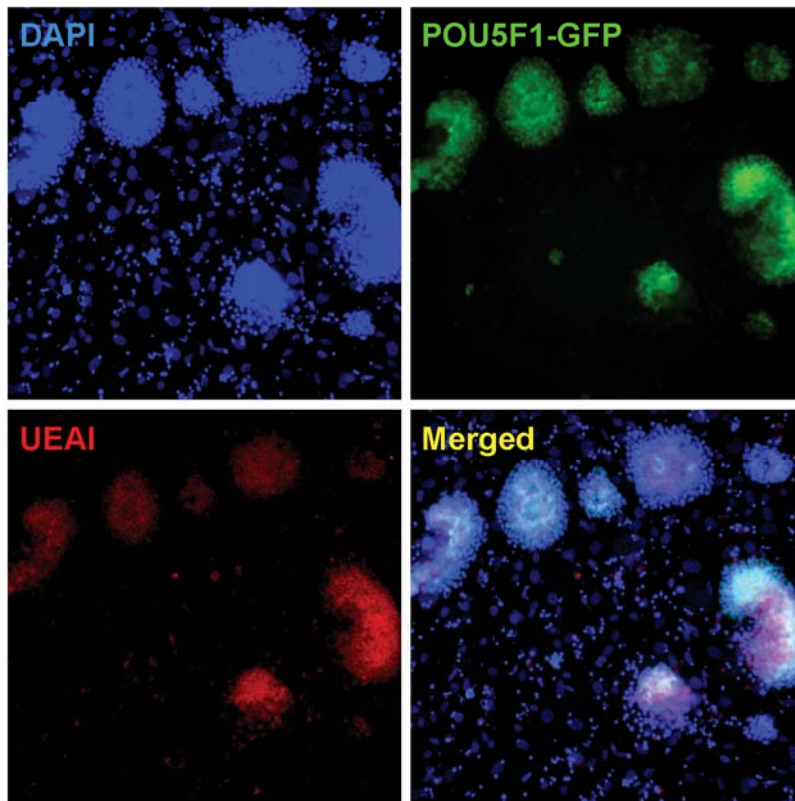


a



b



Supplementary information, Figure S5 Lectin arrays identify pluripotent cells from multiple species.

(a) We used the lectin arrays to determine the glycosylation profiles and lectin-binding patterns for the hydrophobic protein fraction from cells of different species. Hierarchical clustering (NIA Array Analysis Tool) shows that pluripotent mouse ESCs group with human pluripotent cells, separate from non-pluripotent cells. (b) OG2 mESCs expressing GFP under the control of the POU5F1 promoter were labeled with biotinylated UEA-I and streptavidin-AF 555 and analyzed by fluorescence microscopy. GFP positive mESC colonies are also labeled by UEA-I, indicating that UEA-I identifies pluripotent mouse cells as well as pluripotent human cells.