

Reardon et al., Supplemental Data

Supplemental Table S1. Sequences of primers for Real-time RT-PCR.

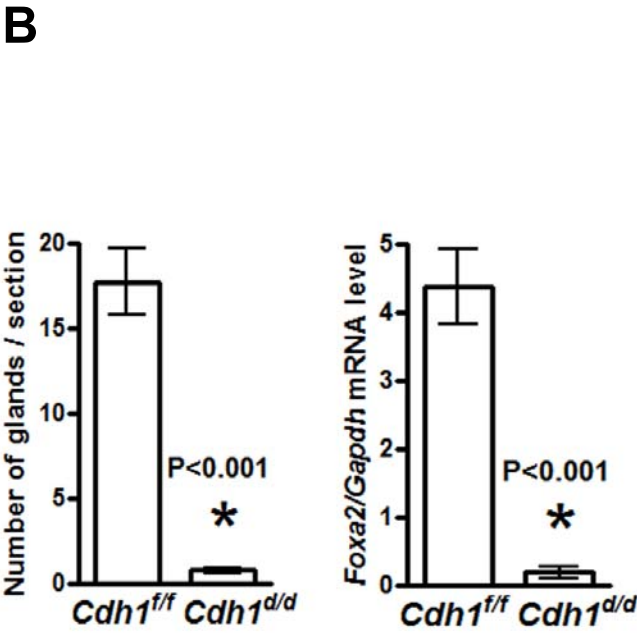
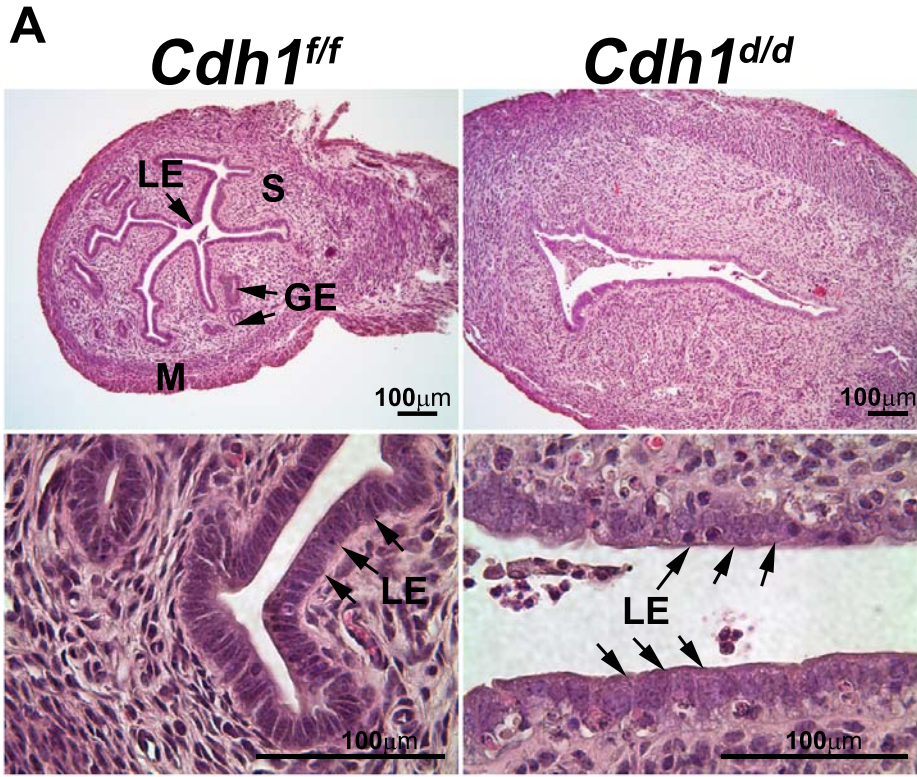
Primer	Sequence of forward and reverse primers 5'-3'
<i>Wnt4</i>	CATCGAGGAGTGCCAATACCA GGAGGGAGTCCAGTGTGGAA
<i>Wnt5a</i>	GGCGAGCTGTCTACCTGTGG GGCGAACGGGTGACCATAGT
<i>Wnt7a</i>	TGAAGAGGACCCAGTGACAGG GGCGTACTGGTGTGTGTTGT
<i>Wnt7b</i>	TGAGGCGGGCAGAAAGG CCTGACACACCGTGACACTTACA
<i>Wnt11</i>	GCCATGAAGGCCTGCCGTAG GATGGTGTGACTGATGGTGG
<i>Wnt16</i>	CCAAGGAGACAGCATTTCATTTATG CTGCATGACCTGGTGACAGAGT
<i>Fzd6</i>	GCGGCGTTTGGCTTCGTT CACAGAGGCAGAAGGACGAAGT
<i>Fzd10</i>	TGCTCTGACCGGCTTCGT GATGAAGGAAGTGCCGATGAC
<i>Hoxa10</i>	TGCCCTTACACGAAGCACCA GCTCCCGGATTCGGTTTTCT
<i>Hoxa11</i>	AGTCGTCTTCCGGCCACACT TTGACGGTCCGGTGAGGTTGA
<i>Msx1</i>	AAGCAGTACCTGTCTATTG GATCTTCACCTGGGTCTC
<i>Msx2</i>	GGTCAAGTCGGAAAATTC GTGGGGCTCATATGTCTG
<i>Vangl2</i>	GGTCGTGCGATCCACAGATG ACGGACTTGGGCAGGTTGAG
<i>Foxa2</i>	ACCTGAGTCCGAGTCTGAGC AGCGTCAGCATCTTGTTGG
<i>Gapdh</i>	CAACTACATGGTCTACATGTTC CTCGCTCCTGGAAGATG

Supplemental Figure Legends

Supplemental Figure S1. Analysis of conditional ablation of *Cdh1* in the mouse uterus at 5-weeks-old. (A) Uterine histology of *Cdh1^{ff}* and *Cdh1^{d/d}* mice. Tissues were stained using hematoxylin and eosin. Legend: GE, glandular epithelium; LE, luminal epithelium; M, myometrium; S, stroma. (B) Gland numbers per section and *Foxa2* mRNA levels in the uteri of *Cdh1^{ff}* and *Cdh1^{d/d}* mice. The results represent the mean \pm SEM (*Cdh1^{ff}* vs *Cdh1^{d/d}* * P<0.001).

Supplemental Figure S2. Analysis of conditional ablation of *Cdh1* in the mouse ovary and oviduct at 5-weeks-old. Tissues were stained using hematoxylin and eosin. No differences in histoarchitecture of the ovary and oviduct were observed between *Cdh1^{ff}* and *Cdh1^{d/d}* mice.

Supplemental Figure 1



Supplemental Figure 2

