

## SUPPLEMENTAL FIGURE LEGEND

Figure S1. **Enforced expression of Cdc6 suppresses anoikis of mouse embryonic fibroblasts constitutively activated for mTORC1.**

Exponentially proliferating MEF, MEF-aRheb and MEF-aRheb-Cdc6 cells were cultured in MC with every 24 h cell sampling for 48 h and analyzed for activation of caspase-3 and the levels of S6K1 and S6K1 Thr<sup>389</sup> phosphorylation, Cdc6 and Rheb by immunoblotting. Arrow indicates the caspase-3-derived fragment generated by its activation.

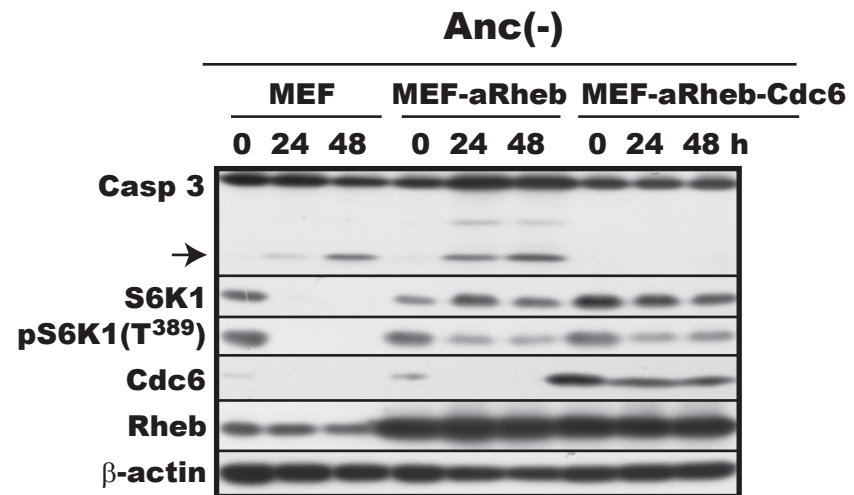


Fig. S1 Niimi et al.