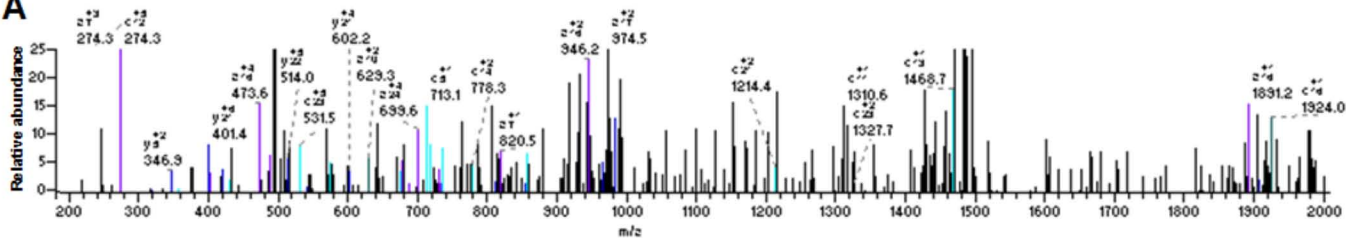
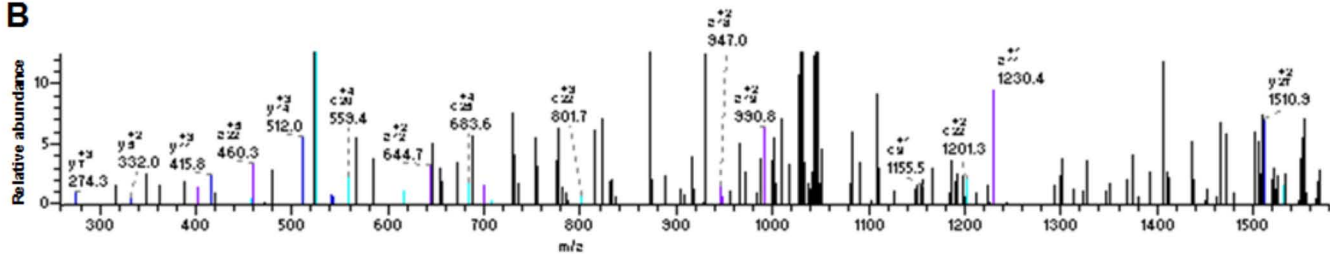


**Supplemental Fig S 2. Orbitrap/ETD spectra of two nitrated tryptic peptide domains in Lmo4 protein.**

A) The ETD spectrum of peptide CSCCQAQLGDIGTSCYTKSGMILCR is indicative of the nitration of Tyr-65. B) The ETD spectrum of peptide NDYIRLFGNSGACSGQSIPASELVMR is indicative of the nitration of Tyr-77.

**A****B**

SD Figure 2