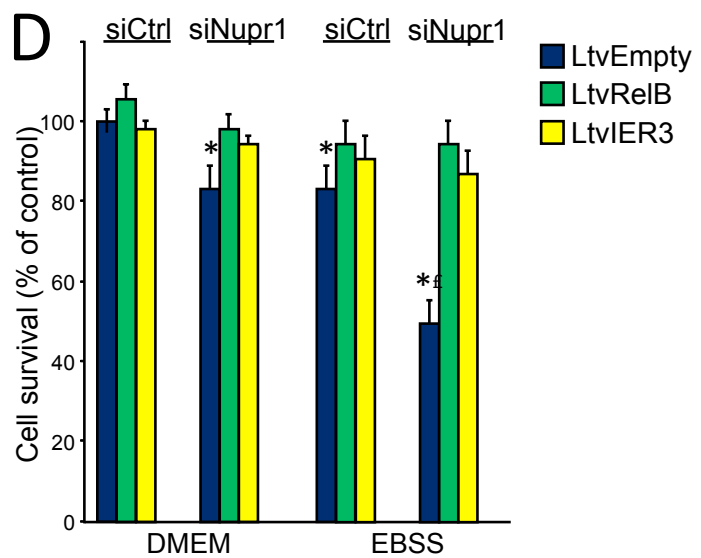
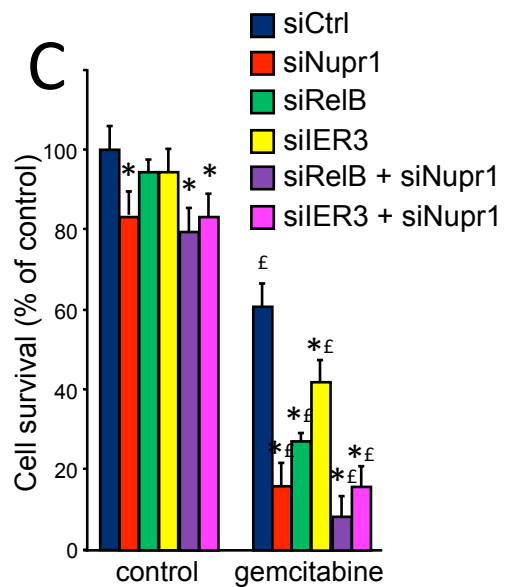
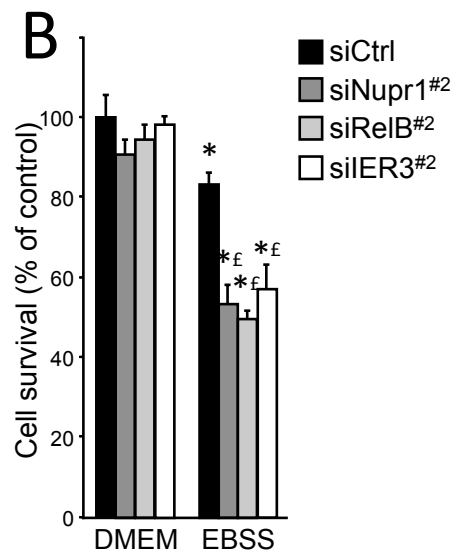
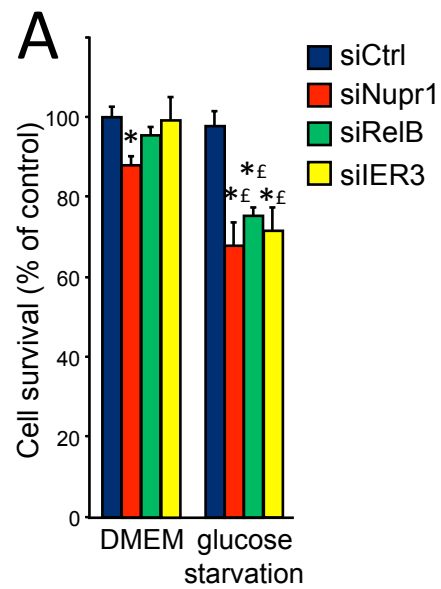
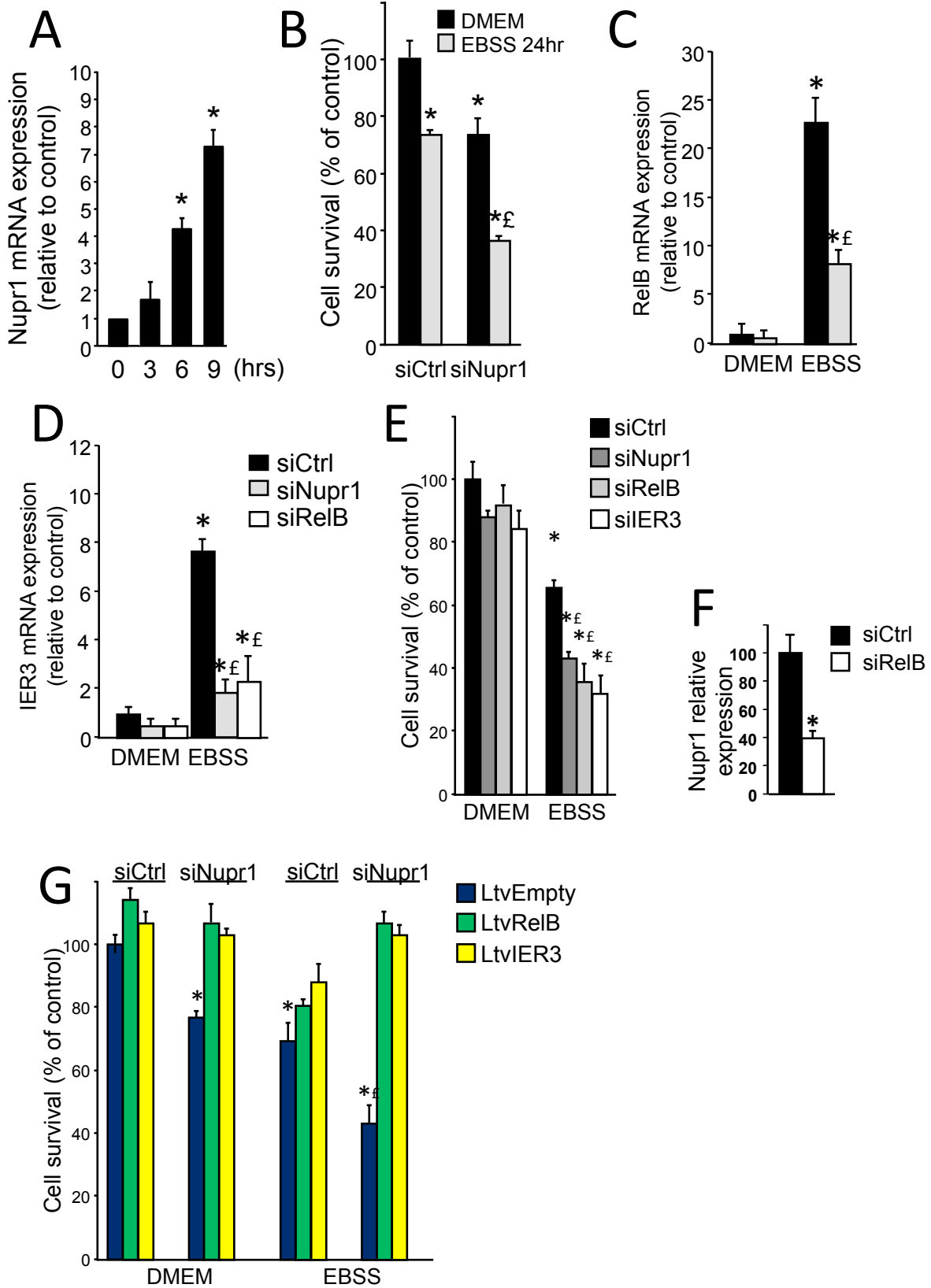


Supplementary Hamidi Fig 1





Supplementary Hamidi Fig 3

Supplementary Table 1

Primer sequences used for Real-time PCR

Gene	Forward sequence	Reverse sequence
huNupr1	5'-TAGAGACGGGACTGCG-3'	5'-GCGTGTCTATTTATTGTTGC-3'
huRelB	5'-TTGAGCGGAAGATTCAACTGG-3'	5'-CCTGCTGGTCCCGATATGAG-3'
huRelA	5'-TTGAGGTGTATTTACGGGACC-3'	5'-GCACATCAGCTTGCGAAAAGG-3'
huIER3	5'-CAGTCGAGGAACCGAACCC-3'	5'-GATCTGGCAGAAGACGATGGT-3'
mNupr1	5'-CCCTTCCCAGCAACCTCTAAA-3'	5'-TCTTGGTCCGACCTTTCCGA-3'
mRelB	5'-ACCGGGTACACCCACATAG-3'	5'-CCCAGGTTGTTAAAGCTGTGC-3'
mIER3	5'-GCTCTGGTCCCGAGATTTTCA-3'	5'-AGATGATGGCGAACAGGAGAA-3'
Cyclophilin	5'-ATGGTCAACCCACCGTGT-3'	5'-TTCTTGCTGTCTTTGGAACCTTGTC-3'

Supplementary Table 2

patient #	Nupr1	RelB	IER3	survival (months)	age	gender
1	0.94	9.32	14.78	>24	65	M
2	1.34	0.3	4.67	>24	78	M
3	2.94	6.32	10.89	>24	60	F
4	3.42	4.27	17.09	20	72	M
5	7.04	5.27	21.32	6	63	F
6	25.08	9.08	21.56	11	65	F
7	18.02	3.12	23.4	11	49	M
8	11.62	10.41	18.98	>24	63	M
9	6.12	4.12	23.57	>24	61	F
10	2.64	9.2	34.67	19	63	M
11	0.47	0.01	2.09	>24	48	F
12	14.31	3.12	21.55	9	61	M
13	4.99	9.04	21.65	>24	76	M
14	0.25	1.2	20.34	20	56	F
15	7.34	3.24	18.43	10	69	F
16	0.32	2.07	5.6	14	52	M
17	2.3	2.8	24.7	7	72	M
18	24.31	6.41	18.24	7	71	F
19	7.12	7.77	30.01	14	80	M
20	3.81	6.12	16.6	18	71	F
21	0.64	3.14	3.89	12	52	M
22	16.91	7.25	35.56	16	59	F
23	20.2	6.41	32.9	16	70	F
24	2.01	3.12	2.45	17	61	M
25	0.82	2.41	9.78	11	77	M
26	5.25	3.41	15.76	18	81	M
27	0.95	0.43	5.8	19	52	M
28	2.03	4.31	12.67	20	69	F
29	4.02	7.21	13.45	>24	49	F
30	11.44	5.44	20.44	3	58	M
31	3.01	12.1	12.81	15	72	M
32	9.01	3.49	17.54	9	54	F
33	1.12	0.21	4.49	19	65	M
34	20.71	3.21	23.89	5	80	M