

Supplementary figure.

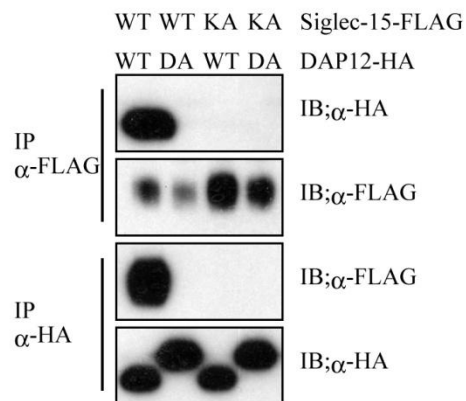


Fig. S1. Interaction between Siglec-15 and DAP12. FLAG-tagged wild-type Siglec-15 or the K272A (KA) mutant was introduced into HEK293T cells with HA-tagged wild-type DAP12 or the D52A (DA) mutant. Proteins were then immunoprecipitated with anti-FLAG or anti-HA antibody. Samples were blotted with anti-HA or anti-FLAG antibody.