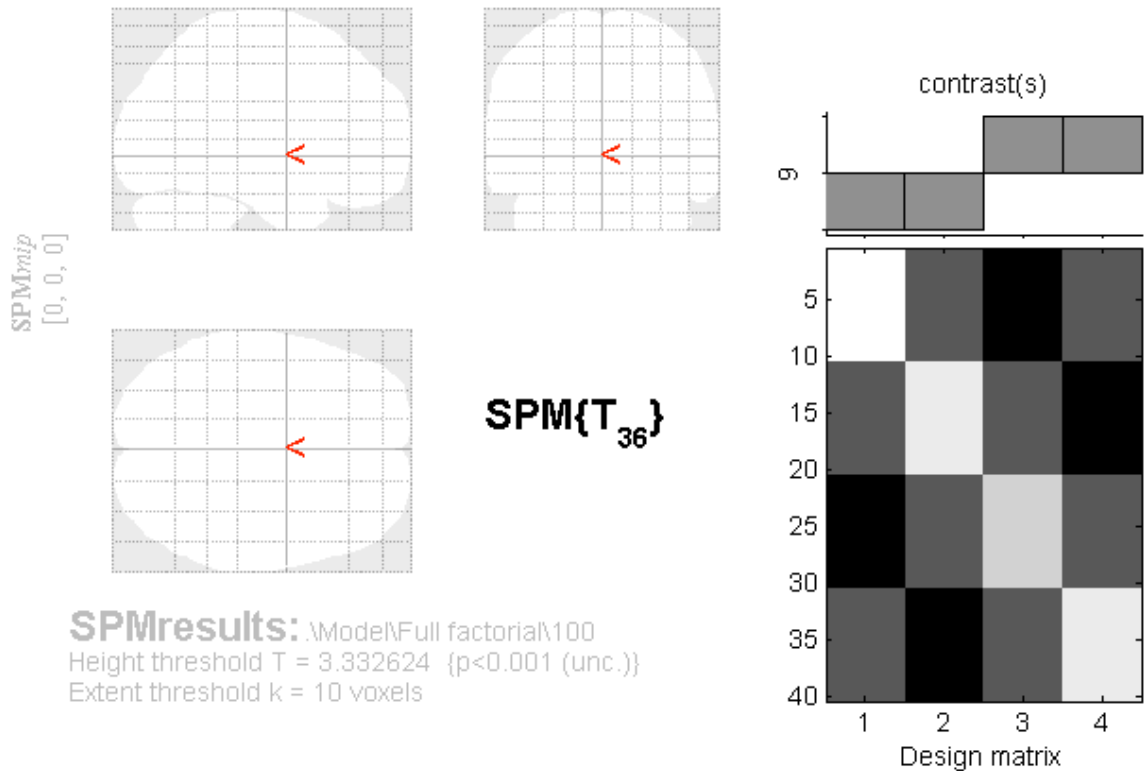


Supplementary Results

Not Beautiful 0-100 ms



Statistics: *p-values adjusted for search volume*

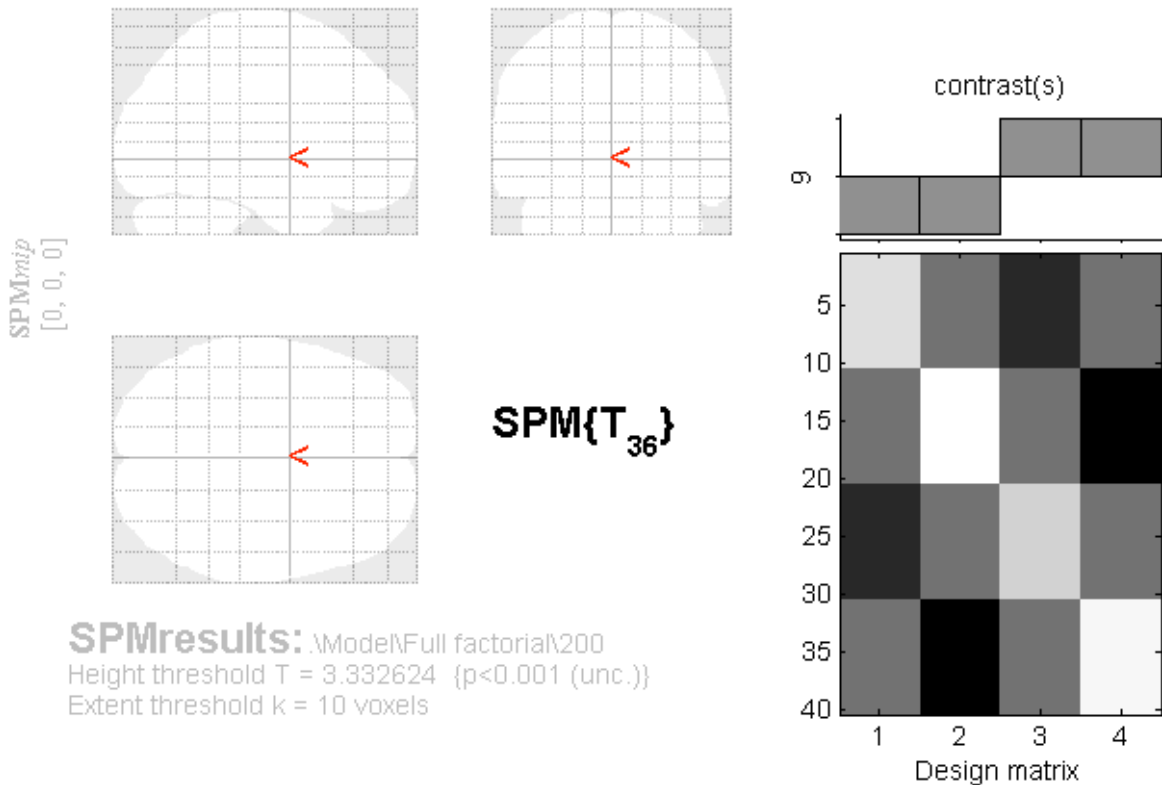
set-level		cluster-level				peak-level				mm mm mm			
p	c	$p_{\text{FWE-corr}}$	$q_{\text{FDR-corr}}$	k_E	p_{uncorr}	$p_{\text{FWE-corr}}$	$q_{\text{FDR-corr}}$	T	(Z_{max})	p_{uncorr}			

no suprathreshold clusters

table shows 3 local maxima more than 8.0mm apart

Height threshold: $T = 3.33$, $p = 0.001$ (0.999)	Degrees of freedom = [1.0, 36.0]
Extent threshold: $k = 10$ voxels, $p = 0.641$ (0.988)	FWHM = 15.2 15.9 15.3 mm mm mm; 7.6 7.9 7.7 (voxels)
Expected voxels per cluster, $\langle k \rangle = 44.712$	Volume: 2093352 = 261669 voxels = 529.8 resels
Expected number of clusters, $\langle c \rangle = 4.46$	Voxel size: 2.0 2.0 2.0 mm mm mm; (resel = 463.36 voxels)
FWEp: 5.464, FDRp: Inf, FWEc: Inf, FDRc: Inf	

Not Beautiful 100-200 ms



Statistics: *p-values adjusted for search volume*

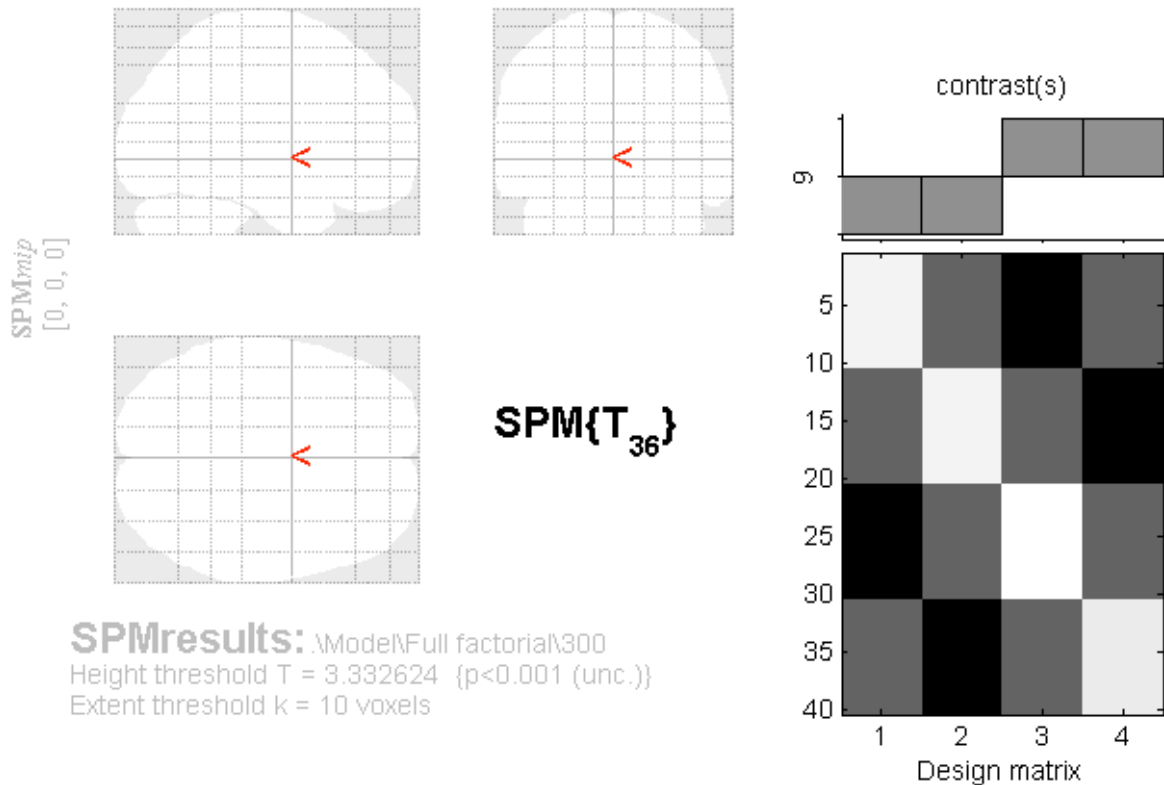
set-level		cluster-level				peak-level				mm mm mm			
p	c	$p_{\text{FWE-corr}}$	$q_{\text{FDR-corr}}$	k_E	p_{uncorr}	$p_{\text{FWE-corr}}$	$q_{\text{FDR-corr}}$	T	(Z_{\equiv})	p_{uncorr}			

no suprathreshold clusters

table shows 3 local maxima more than 8.0mm apart

Height threshold: T = 3.33, p = 0.001 (0.998)	Degrees of freedom = [1.0, 36.0]
Extent threshold: k = 10 voxels, p = 0.665 (0.984)	FWHM = 16.1 16.2 16.2 mm mm mm; 8.0 8.1 8.1 (voxels)
Expected voxels per cluster, <k> = 50.877	Volume: 2093424 = 261678 voxels = 465.5 resels
Expected number of clusters, <c> = 4.11	Voxel size: 2.0 2.0 2.0 mm mm mm; (resel = 527.26 voxels)
FWEp: 5.416, FDRp: Inf, FWEc: Inf, FDRc: Inf	

Not Beautiful 200-300 ms



Statistics: *p-values adjusted for search volume*

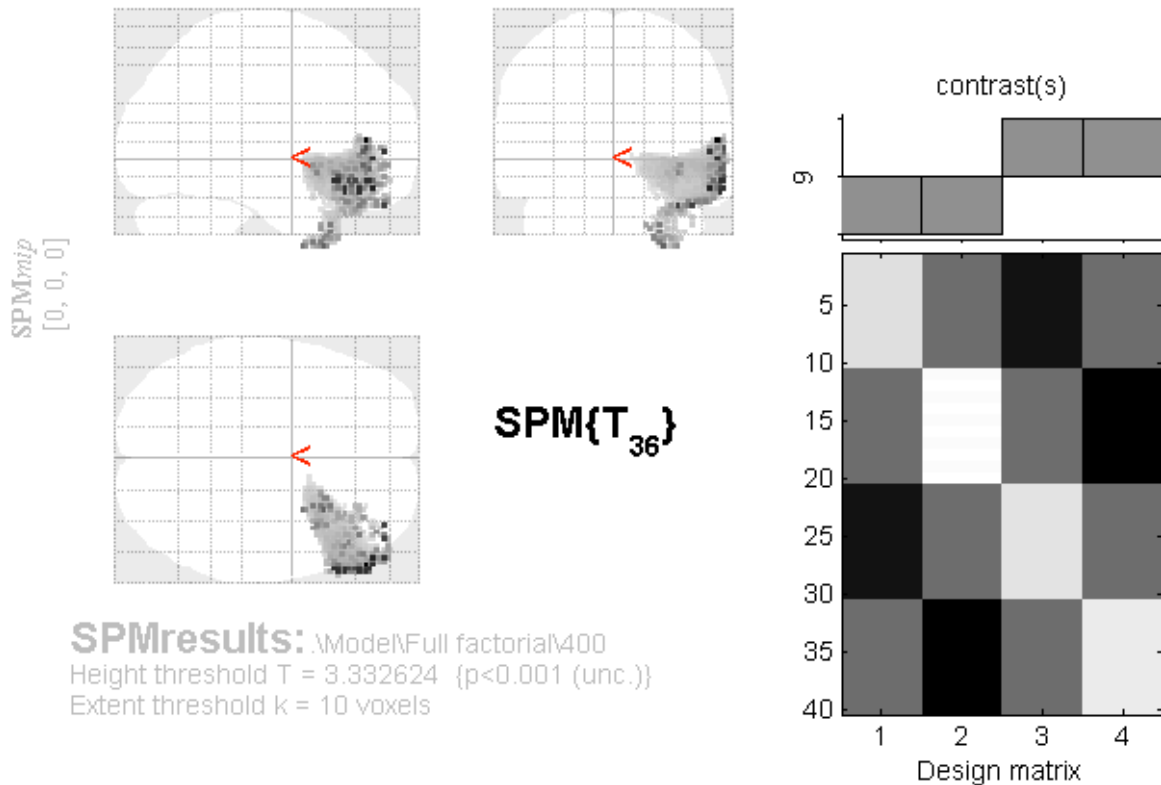
set-level		cluster-level				peak-level				mm mm mm			
p	c	$p_{\text{FWE-corr}}$	$q_{\text{FDR-corr}}$	k_E	p_{uncorr}	$p_{\text{FWE-corr}}$	$q_{\text{FDR-corr}}$	T	(Z_{\equiv})	p_{uncorr}			

no suprathreshold clusters

table shows 3 local maxima more than 8.0mm apart

Height threshold: $T = 3.33$, $p = 0.001$ (0.885)	Degrees of freedom = [1.0, 36.0]
Extent threshold: $k = 10$ voxels, $p = 0.827$ (0.833)	FWHM = 23.7 23.9 23.5 mm mm mm; 11.8 12.0 11.7 (voxels)
Expected voxels per cluster, $\langle k \rangle = 160.302$	Volume: 2078256 = 259782 voxels = 146.6 resels
Expected number of clusters, $\langle c \rangle = 1.79$	Voxel size: 2.0 2.0 2.0 mm mm mm; (resel = 1661.25 voxels)
FWEp: 4.986, FDRp: Inf, FWEc: Inf, FDRc: Inf	

Not Beautiful 300-400 ms



Statistics: *p-values adjusted for search volume*

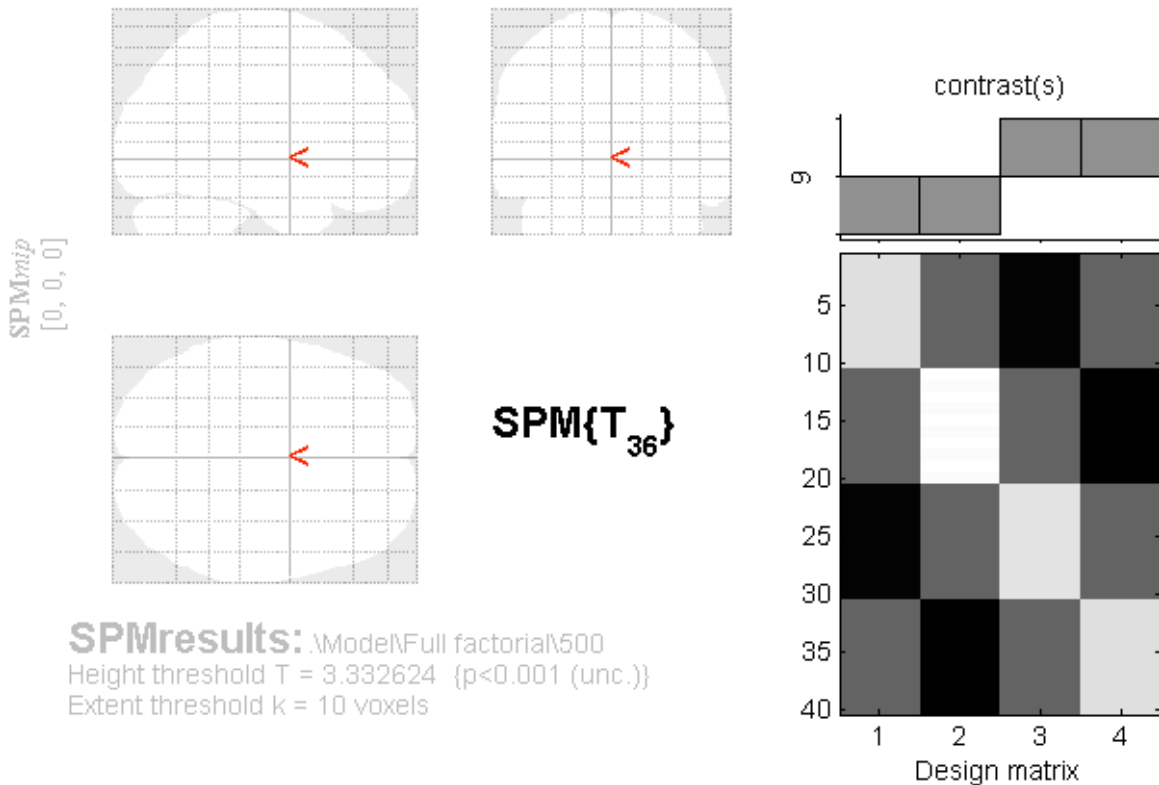
set-level		cluster-level				peak-level					mm mm mm		
p	c	$p_{\text{FWE-corr}}$	$q_{\text{FDR-corr}}$	k_E	p_{uncorr}	$p_{\text{FWE-corr}}$	$q_{\text{FDR-corr}}$	T	(Z_{E})	p_{uncorr}			
0.770	2	0.000	0.000	2913	0.000	0.119	0.836	4.85	4.23	0.000	58	42	10
						0.195	0.836	4.63	4.07	0.000	54	46	-16
						0.218	0.836	4.57	4.03	0.000	58	46	0
		0.893	0.941	24	0.601	0.282	0.836	4.45	3.95	0.000	36	52	-26
		0.736	0.836	3.84	3.49	0.000	48	54	-24				

table shows 3 local maxima more than 8.0mm apart

Height threshold: T = 3.33, p = 0.001 (0.976)
 Extent threshold: k = 10 voxels, p = 0.753 (0.939)
 Expected voxels per cluster, <k> = 87.697
 Expected number of clusters, <c> = 2.80
 FWEp: 5.210, FDRp: Inf, FWEc: 2913, FDRc: 2913

Degrees of freedom = [1.0, 36.0]
 FWHM = 19.1 19.8 19.3 mm mm mm; 9.6 9.9 9.6 (voxels)
 Volume: 2076168 = 259521 voxels = 267.8 resels
 Voxel size: 2.0 2.0 2.0 mm mm mm; (resel = 908.83 voxels)

Not Beautiful 400-500 ms



Statistics: *p-values adjusted for search volume*

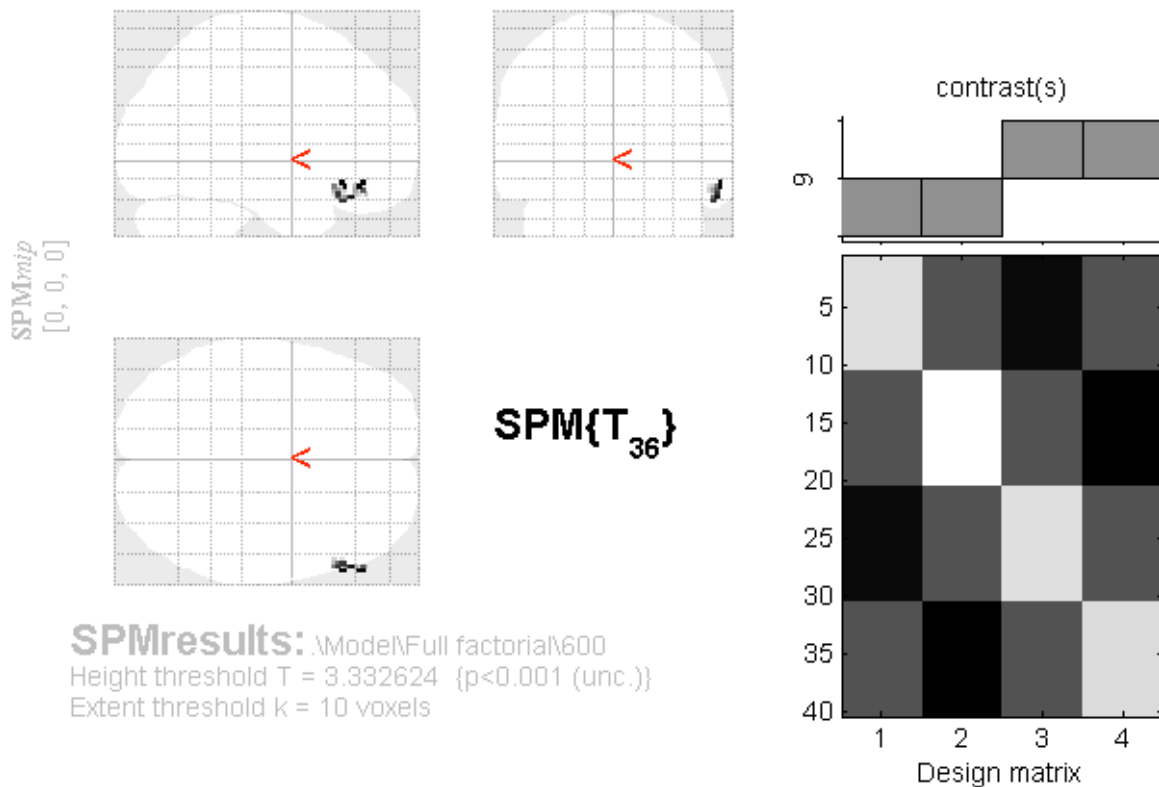
set-level		cluster-level				peak-level				mm mm mm			
p	c	$p_{\text{FWE-corr}}$	$q_{\text{FDR-corr}}$	k_E	p_{uncorr}	$p_{\text{FWE-corr}}$	$q_{\text{FDR-corr}}$	T	(Z_{\equiv})	p_{uncorr}			

no suprathreshold clusters

table shows 3 local maxima more than 8.0mm apart

Height threshold: T = 3.33, p = 0.001 (0.837)	Degrees of freedom = [1.0, 36.0]
Extent threshold: k = 10 voxels, p = 0.846 (0.784)	FWHM = 25.4 25.8 24.5 mm mm mm; 12.7 12.9 12.3 (voxels)
Expected voxels per cluster, <k> = 194.043	Volume: 2056960 = 257120 voxels = 119.9 resels
Expected number of clusters, <c> = 1.53	Voxel size: 2.0 2.0 2.0 mm mm mm; (resel = 2010.93 voxels)
FWEp: 4.911, FDRp: Inf, FWEc: Inf, FDRc: Inf	

Not Beautiful 500-600 ms



Statistics: *p-values adjusted for search volume*

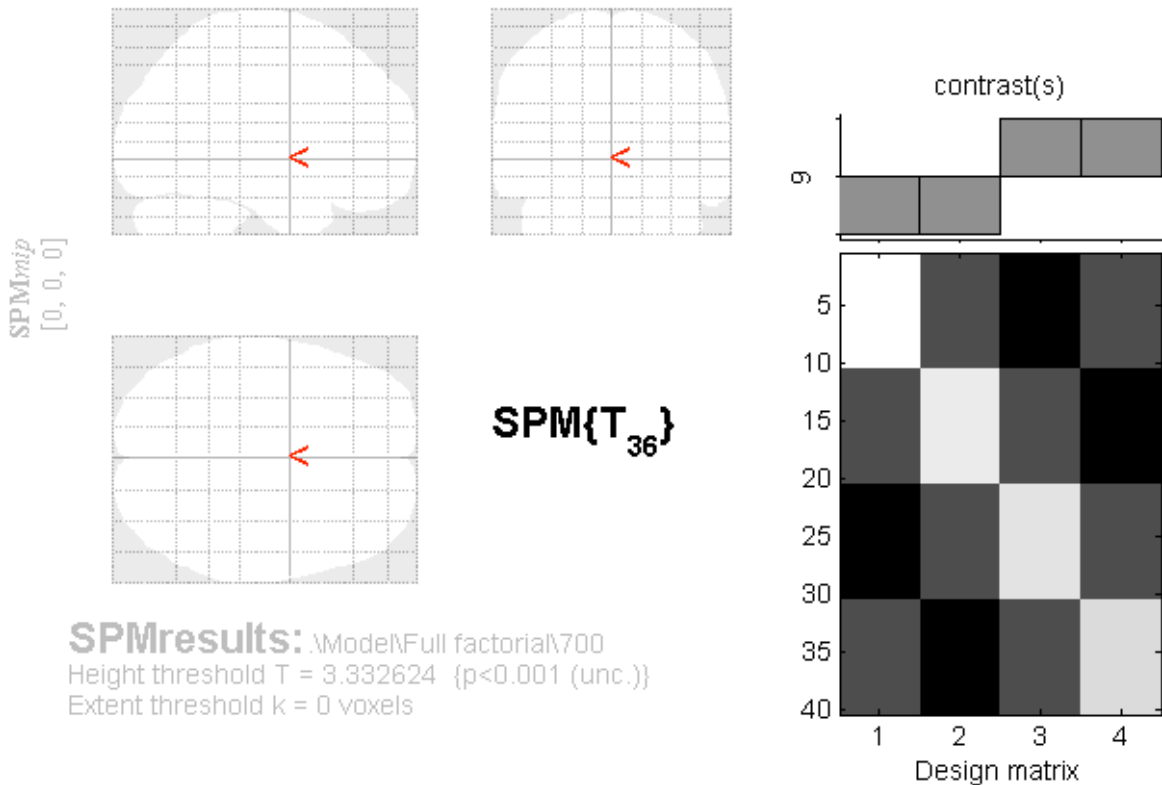
cluster-level				peak-level					mm mm mm		
$p_{\text{FWE-corr}}$	$q_{\text{FDR-corr}}$	k_E	p_{uncorr}	$p_{\text{FWE-corr}}$	$q_{\text{FDR-corr}}$	T	(Z_{eq})	p_{uncorr}			
0.583	0.975	30	0.785	0.372	0.805	3.76	3.43	0.000	60	30	-14
				0.372	0.805	3.76	3.43	0.000	60	40	-12
				0.428	0.805	3.67	3.36	0.000	56	30	-22

table shows 3 local maxima more than 8.0mm apart

Height threshold: T = 3.33, p = 0.001 (0.672)
 Extent threshold: k = 10 voxels, p = 0.890 (0.629)
 Expected voxels per cluster, <k> = 335.884
 Expected number of clusters, <c> = 0.99
 FWEp: 4.707, FDRp: Inf, FWEc: Inf, FDRc: Inf

Degrees of freedom = [1.0, 36.0]
 FWHM = 30.4 31.6 28.9 mm mm mm; 15.2 15.8 14.5 (voxels)
 Volume: 2047464 = 255933 voxels = 68.9 resels
 Voxel size: 2.0 2.0 2.0 mm mm mm; (resel = 3480.87 voxels)

Not Beautiful 600-700 ms



Statistics: *p-values adjusted for search volume*

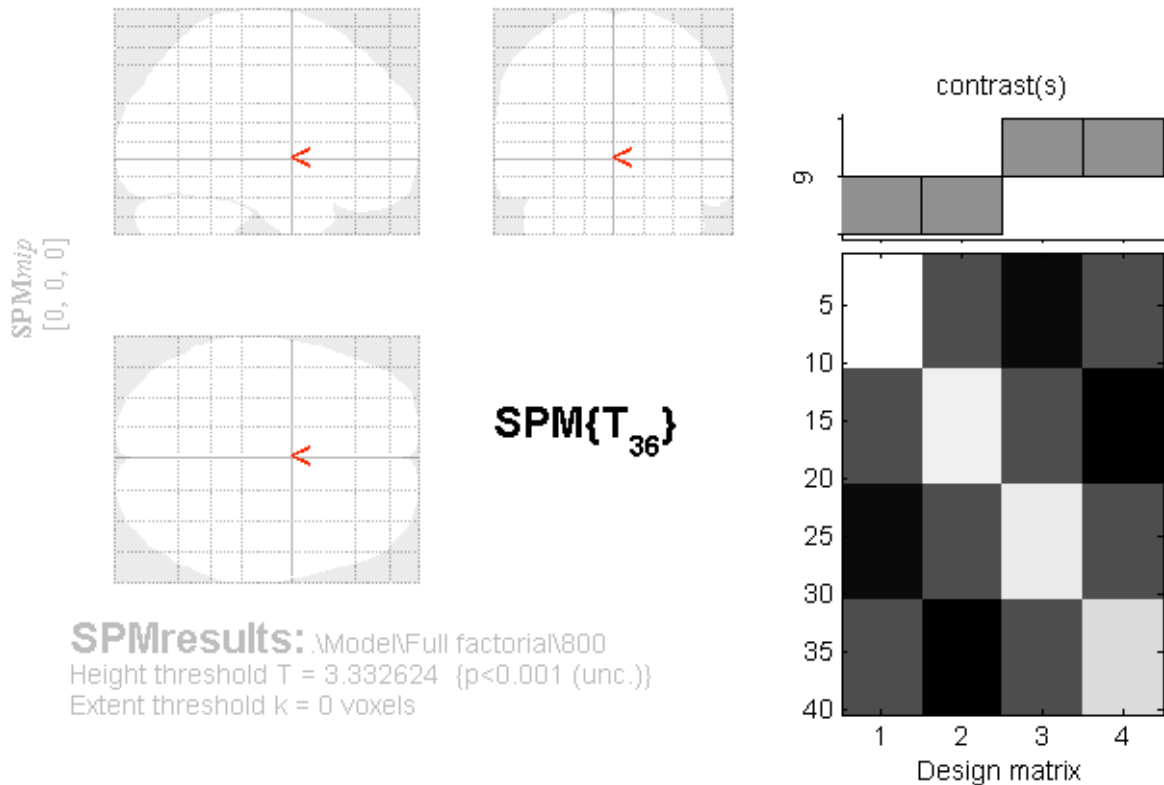
set-level		cluster-level				peak-level				mm mm mm			
p	c	$p_{\text{FWE-corr}}$	$q_{\text{FDR-corr}}$	k_E	p_{uncorr}	$p_{\text{FWE-corr}}$	$q_{\text{FDR-corr}}$	T	(Z_{\equiv})	p_{uncorr}			

no suprathreshold clusters

table shows 3 local maxima more than 8.0mm apart

Height threshold: T = 3.33, p = 0.001 (0.649)	Degrees of freedom = [1.0, 36.0]
Extent threshold: k = 0 voxels, p = 1.000 (0.649)	FWHM = 31.2 32.1 30.0 mm mm mm; 15.6 16.0 15.0 (voxels)
Expected voxels per cluster, <k> = 361.643	Volume: 2052664 = 256583 voxels = 64.2 resels
Expected number of clusters, <c> = 1.05	Voxel size: 2.0 2.0 2.0 mm mm mm; (resel = 3747.82 voxels)
FWEp: 4.680, FDRp: Inf, FWEc: Inf, FDRc: Inf	

Not Beautiful 700-800 ms



Statistics: *p-values adjusted for search volume*

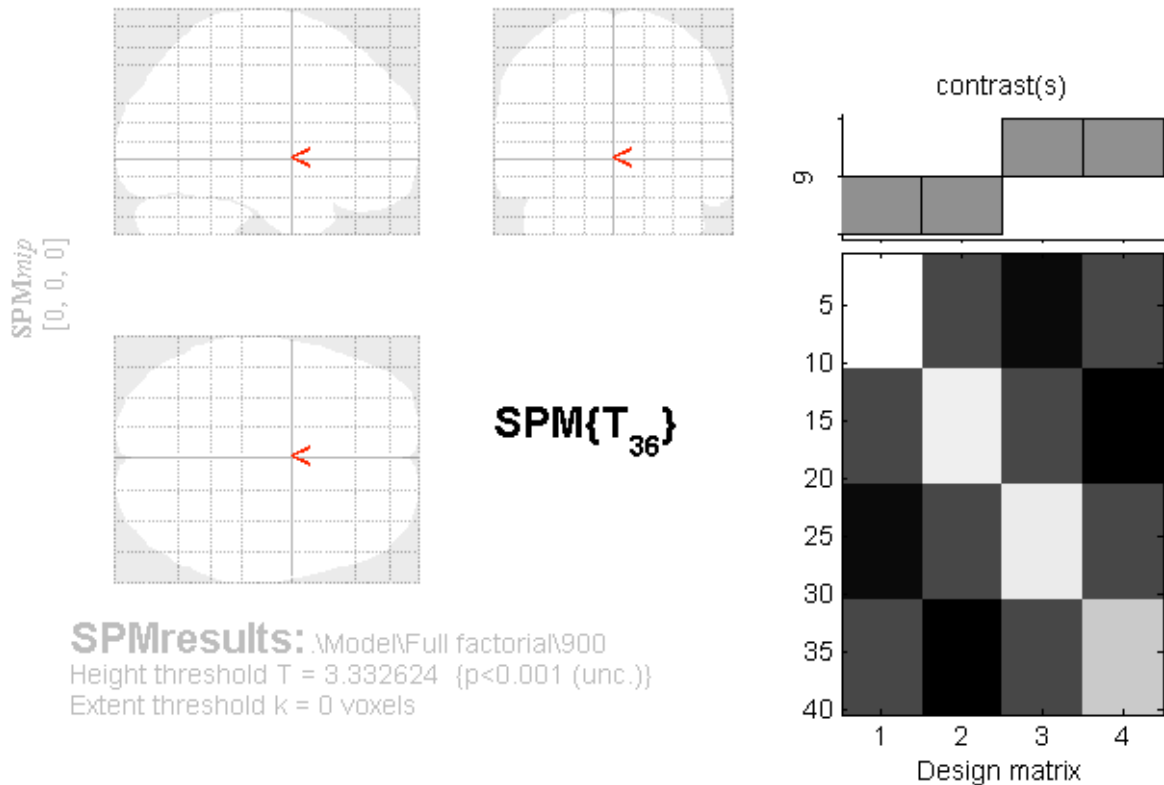
set-level		cluster-level				peak-level				mm mm mm			
p	c	$p_{\text{FWE-corr}}$	$q_{\text{FDR-corr}}$	k_E	p_{uncorr}	$p_{\text{FWE-corr}}$	$q_{\text{FDR-corr}}$	T	(Z_{\equiv})	p_{uncorr}			

no suprathreshold clusters

table shows 3 local maxima more than 8.0mm apart

Height threshold: T = 3.33, p = 0.001 (0.513)	Degrees of freedom = [1.0, 36.0]
Extent threshold: k = 0 voxels, p = 1.000 (0.513)	FWHM = 35.6 37.5 34.6 mm mm mm; 17.8 18.7 17.3 (voxels)
Expected voxels per cluster, <k> = 557.385	Volume: 2040512 = 255064 voxels = 41.4 resels
Expected number of clusters, <c> = 0.72	Voxel size: 2.0 2.0 2.0 mm mm mm; (resel = 5776.34 voxels)
FWEp: 4.519, FDRp: Inf, FWEc: Inf, FDRc: Inf	

Not Beautiful 800-900 ms



Statistics: *p-values adjusted for search volume*

set-level		cluster-level				peak-level				mm mm mm			
p	c	$p_{\text{FWE-corr}}$	$q_{\text{FDR-corr}}$	k_E	p_{uncorr}	$p_{\text{FWE-corr}}$	$q_{\text{FDR-corr}}$	T	(Z_{\equiv})	p_{uncorr}			

no suprathreshold clusters

table shows 3 local maxima more than 8.0mm apart

Height threshold: $T = 3.33$, $p = 0.001$ (0.586)	Degrees of freedom = [1.0, 36.0]
Extent threshold: $k = 0$ voxels, $p = 1.000$ (0.586)	FWHM = 33.3 34.1 32.3 mm mm mm; 16.6 17.1 16.1 (voxels)
Expected voxels per cluster, $\langle k \rangle = 441.453$	Volume: 2053608 = 256701 voxels = 52.6 resels
Expected number of clusters, $\langle c \rangle = 0.88$	Voxel size: 2.0 2.0 2.0 mm mm mm; (resel = 4574.91 voxels)
FWEp: 4.607, FDRp: Inf, FWEc: Inf, FDRc: Inf	