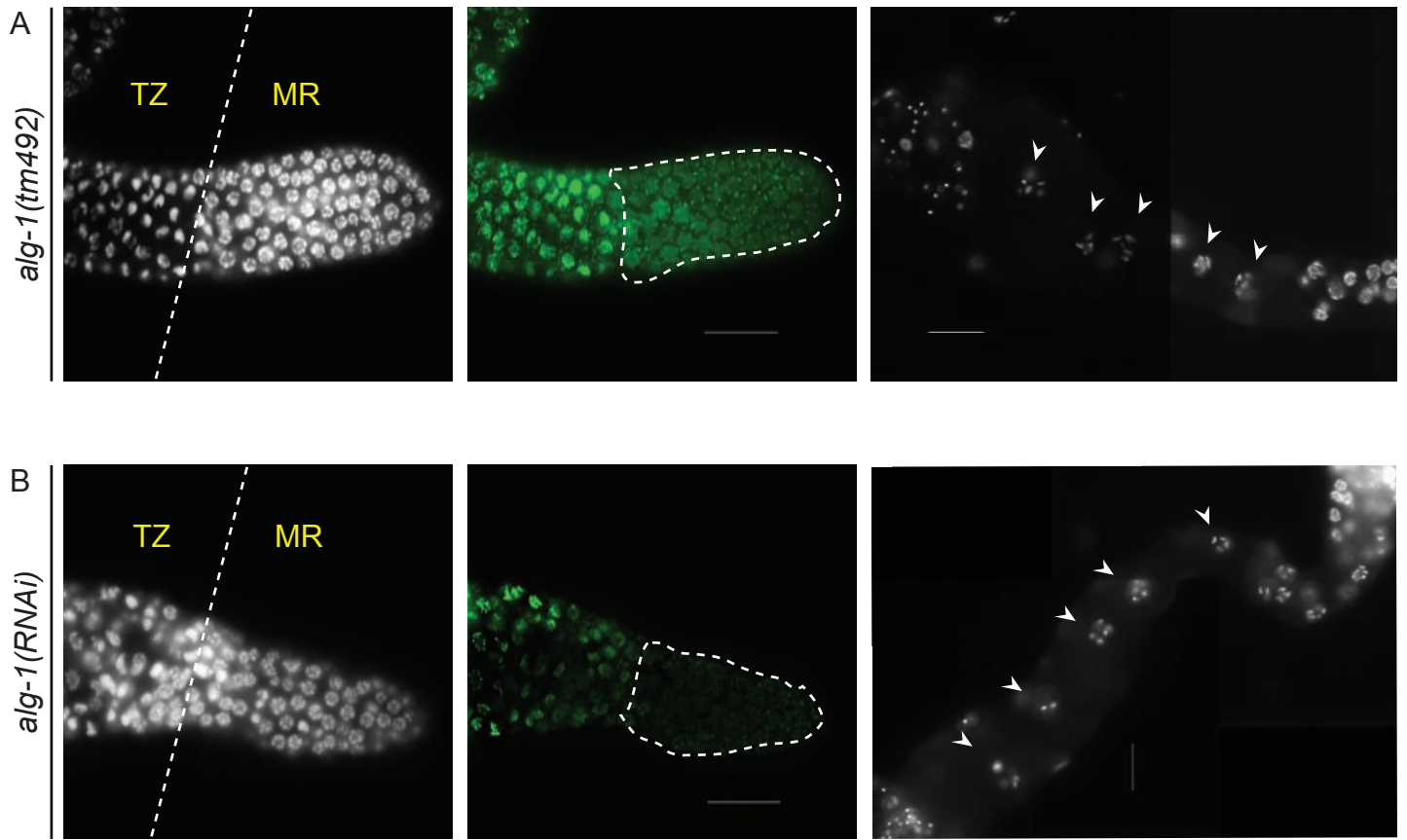


Supplementary Figure G1 Analyses of *alg-1(tm492)* and *alg-1(RNAi)* animals germline. (A-B) DAPI and HIM-3 staining depicting shorter mitotic region observed in *alg-1(tm492)* and *alg-1(RNAi)* animals. (Right panels) DAPI stained germline. Arrowheads depict oocyte nuclei in diakinesis stage in the proximal gonad arm. (C) The brood sizes were defined as the numbers of viable larvae that developed to the L1 stage descended from a single hermaphrodite of its strain. N: number of animals (brood size) or number of replicates (10 animals/replicate) ; MR: Mitotic Region. In parenthesis, *p*-value calculated with a Student's *t*-test to compare numbers with wild-type (*) animals and represented as \pm SEM.



Strain	Brood size (N=25)	Nb of cells in MR (N=5)	Oocyte / arm Day 1 (N=5)	Oocyte / arm Day 2 (N=5)
<i>Wild-type</i>	266.4±3.22	240.3±0.63	8.4±0.16	9.7±0.16
<i>alg-1(tm492)</i>	86.5±7.6 *(2.42E-16)	205.7±0.9 *(7.16E-06)	5.92±0.12 *(8.24E-06)	6.16±0.06 *(1.92E-05)
<i>alg-1(RNAi)</i>	173±11.13 *(1.45E-08)	222.3 ±0.8 *(2.15E-05)	7.22±0.07 *(2.97E-05)	7.98±0.14 *(0.0008)