

## IP

strain

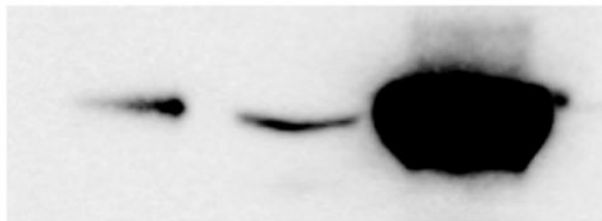
-

anti-Rts1

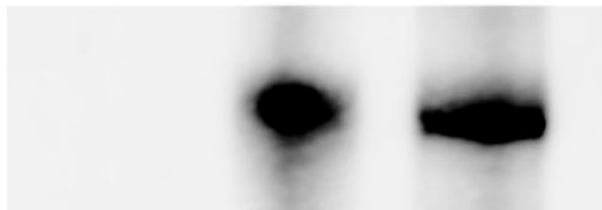
anti-Rts1

*tpd3Δ**tpd3Δ*

WT



anti-HA



anti-Rts1

**Figure S5 Rts1 does not interact with Pph21 in a *tpd3*Δ strain.** Cells lacking Tpd3 were grown to exponential phase in glucose-deprived conditions. After addition of 20 mM glucose for 2 minutes, cells were extracted and immunopurified using no antibody and anti-Rts1 respectively. Subsequent western blot analysis showed no detectable interaction of the PP2A catalytic subunit with Rts1.