

Supplementary information, Figure S10

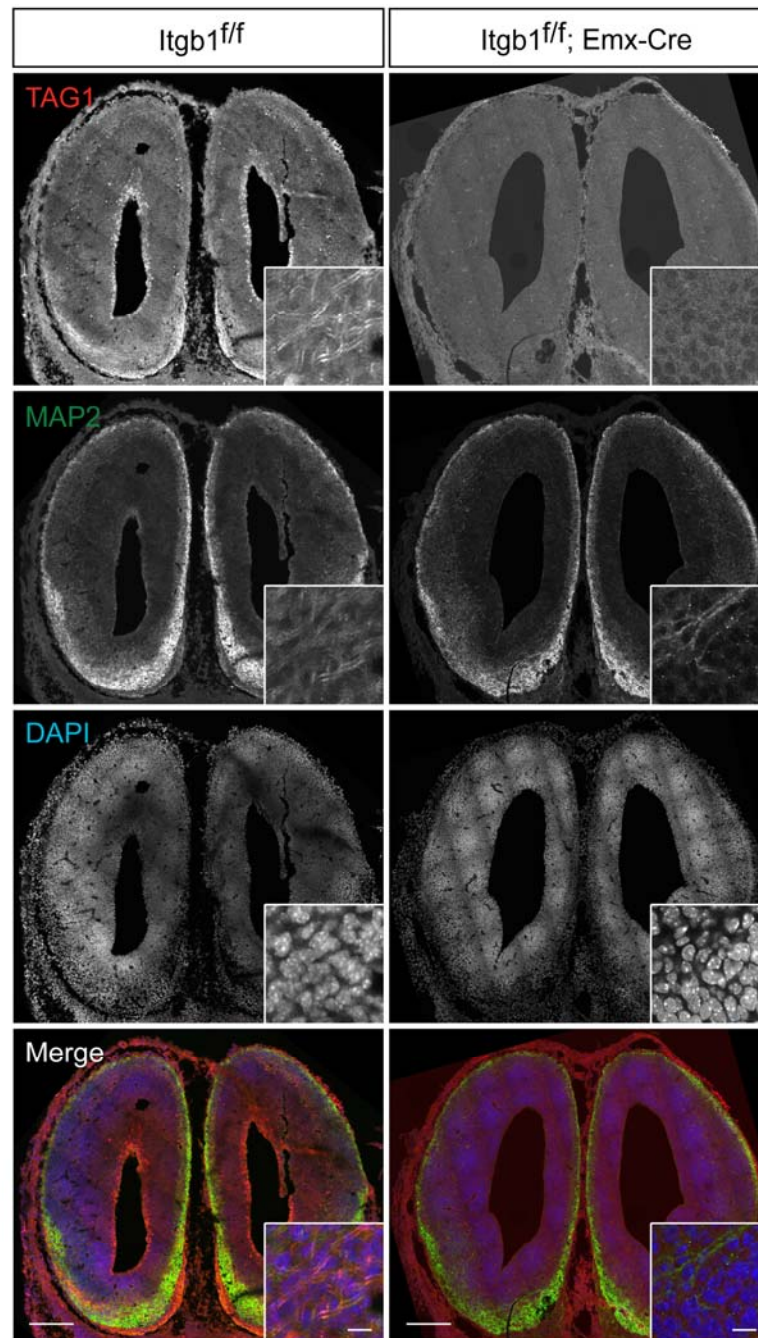


Figure S10 Cortical sections of control (*Itgb1^{f/f}*) or *Itgb1* mutant (*Itgb1^{f/f}; Emx1-Cre*) mice at E14.5 were stained with antibody against TAG1 or MAP2. Cell layers were displayed by DAPI labeling. Insets indicate magnified regions indicated by arrows. Scale bars are 600 μm or 30 μm (insets).