

Supplementary information, Figure S5

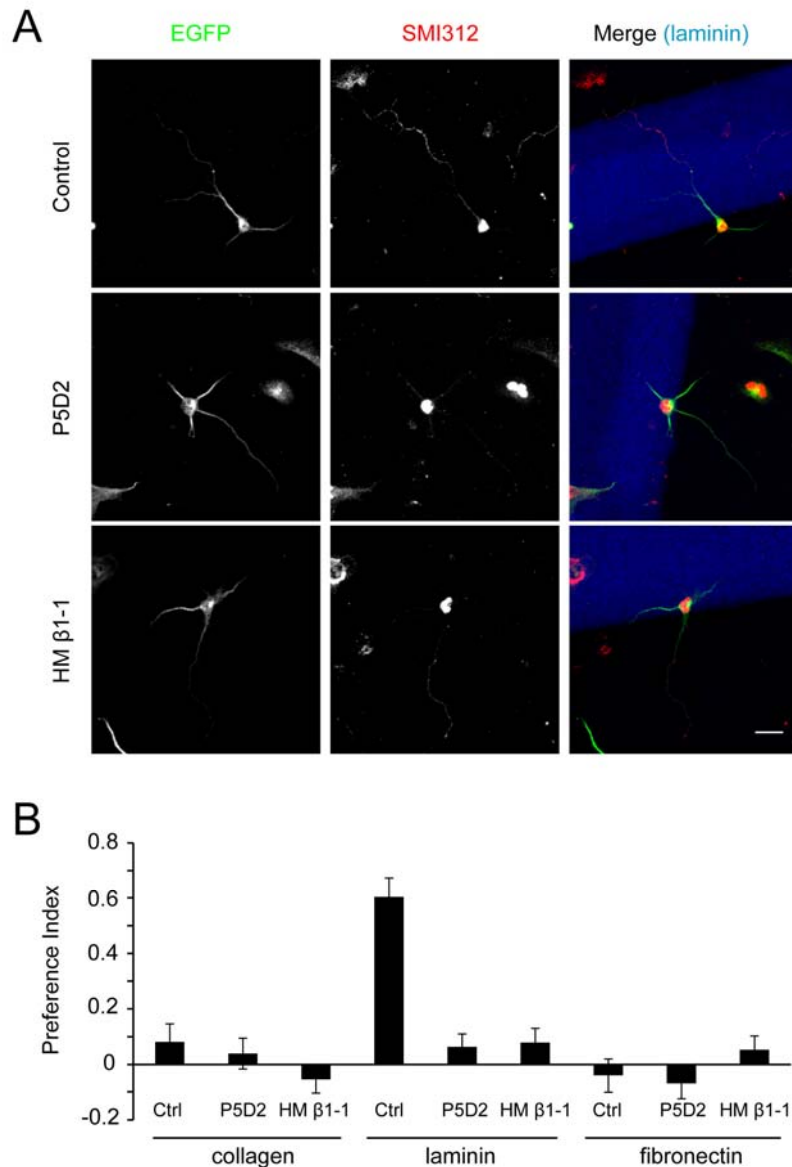


Figure S5 Effects of Itgb1 function-blocking antibodies on axon initiation on laminin-strips. **(A)** Hippocampal neurons were transfected with pCAG-EGFP and cultured on substrates coated with laminin stripes (blue) and PDL, followed by the treatments with P5D2, HM β 1-1 or vehicle control (DMSO). After 48 h, cultures were stained with Smi-312 antibody. Scale bar, 20 μ m. **(B)** Preference index (PI, defined as $[(\% \text{ on stripe}) - (\% \text{ off stripe})] / 100\%$) was analyzed to reflect the preference of axon initiation sites to different substrates for neurons without (Ctrl) or with Itgb1 blocking antibodies.