

Supplementary information, Figure S9

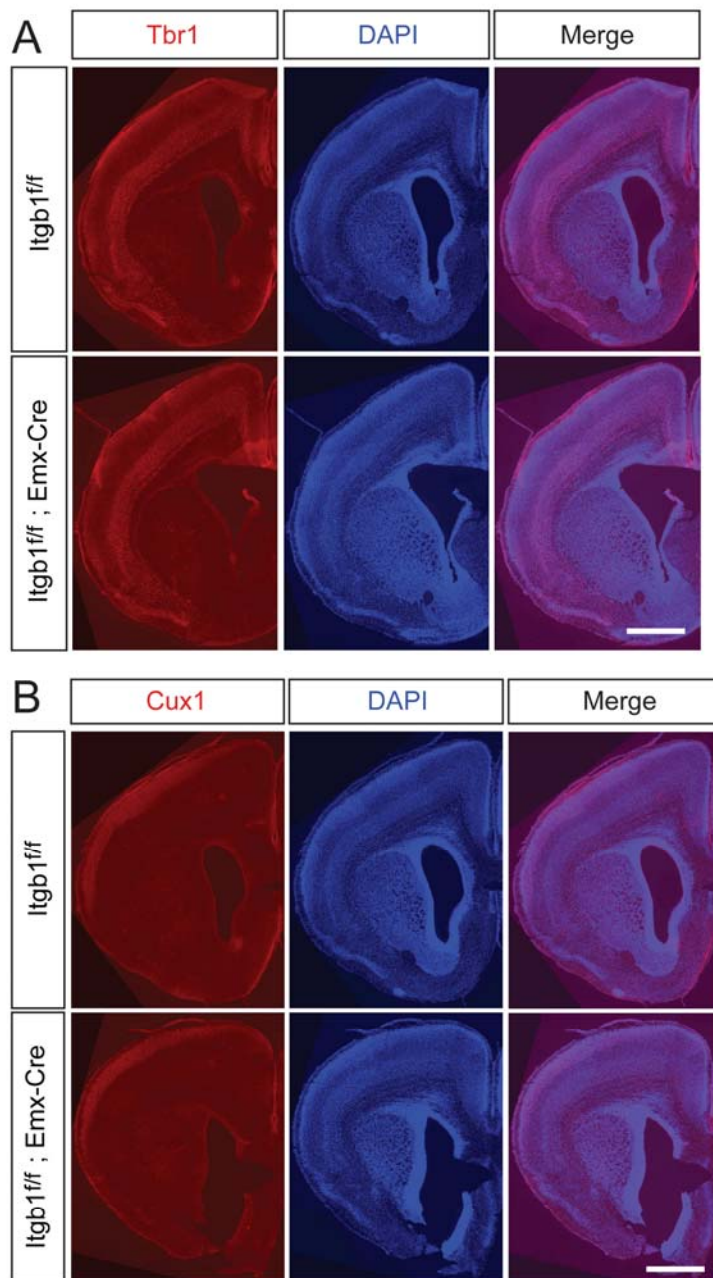


Figure S9 Cortical sections from *Itgb1^{ff}* or *Itgb1^{ff}; Emx1-Cre* mice at P20 were stained with antibody against Tbr1 (**A**) to mark layers II-IV and VI, or Cux1 (**B**) to mark layers II-III. Scale bar, 1 mm.