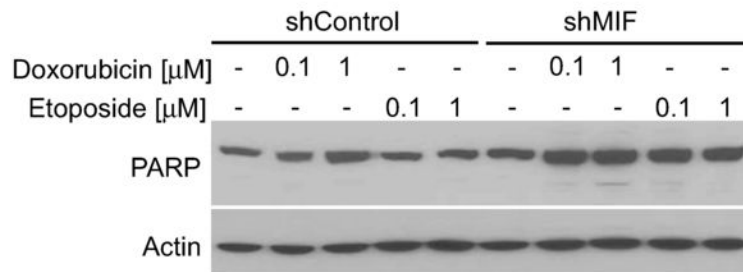
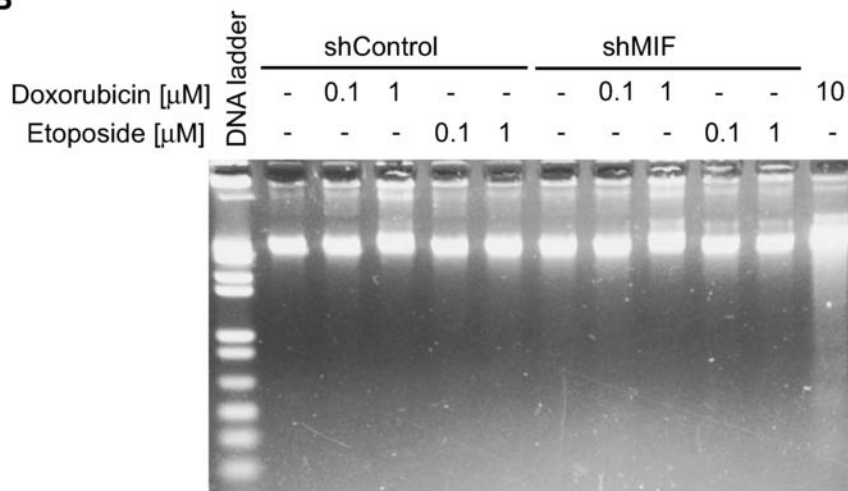


A**B**

Supplemental 13. Treatment with doxorubicin or etoposide did not increase PARP cleavage or DNA fragmentation in the MIF knockdown cells. (A) The levels of PARP cleavage from shControl or shMIF cells treated with low concentrations (0.1 and 1 μ M) of doxorubicin or etoposide were determined by immunoblot analysis. The levels of actin were used as protein loading controls. (B) Cells were treated as in (A), DNA fragmentation assays instead of PARP cleavage were performed. Sample from cells treated with doxorubicin (10 μ M) was used as a positive control for the DNA fragmentation assays.

Supplemental figure 13