

Supplementary information, Figure S3

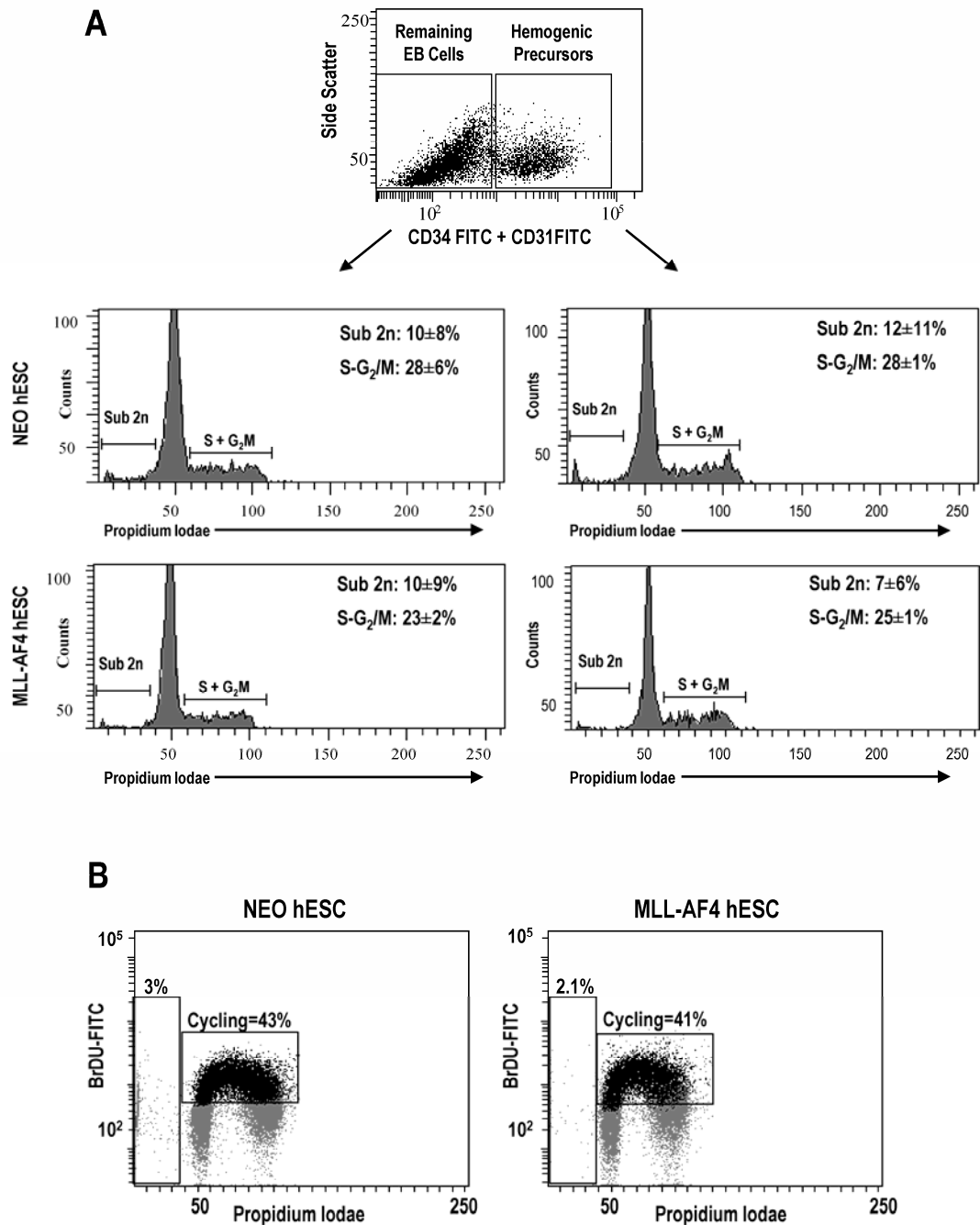


Figure S3 Cell cycle analysis reveals that the expression of MLL-AF4 promotes specification of hESCs into hemogenic precursors rather than enhanced proliferation or survival of the emerging hemogenic precursors. **(A)** Flow cytometric analysis revealing similar cell cycle distribution and Sub-G₀/G₁ fraction in hemogenic precursors

(CD31⁺CD34⁺) and remaining cells within the EBs (CD31⁻CD34⁻) at day 11 of EB development in NEO- and MLL-AF4 hESCs. Data is presented as mean \pm SEM for 3 independent experiments. **(B)** No differences in the proportion of cycling (BrdU⁺) or apoptotic (Sub-G0/G1) cells are found in NEO *versus* MLL-AF4 hESCs.