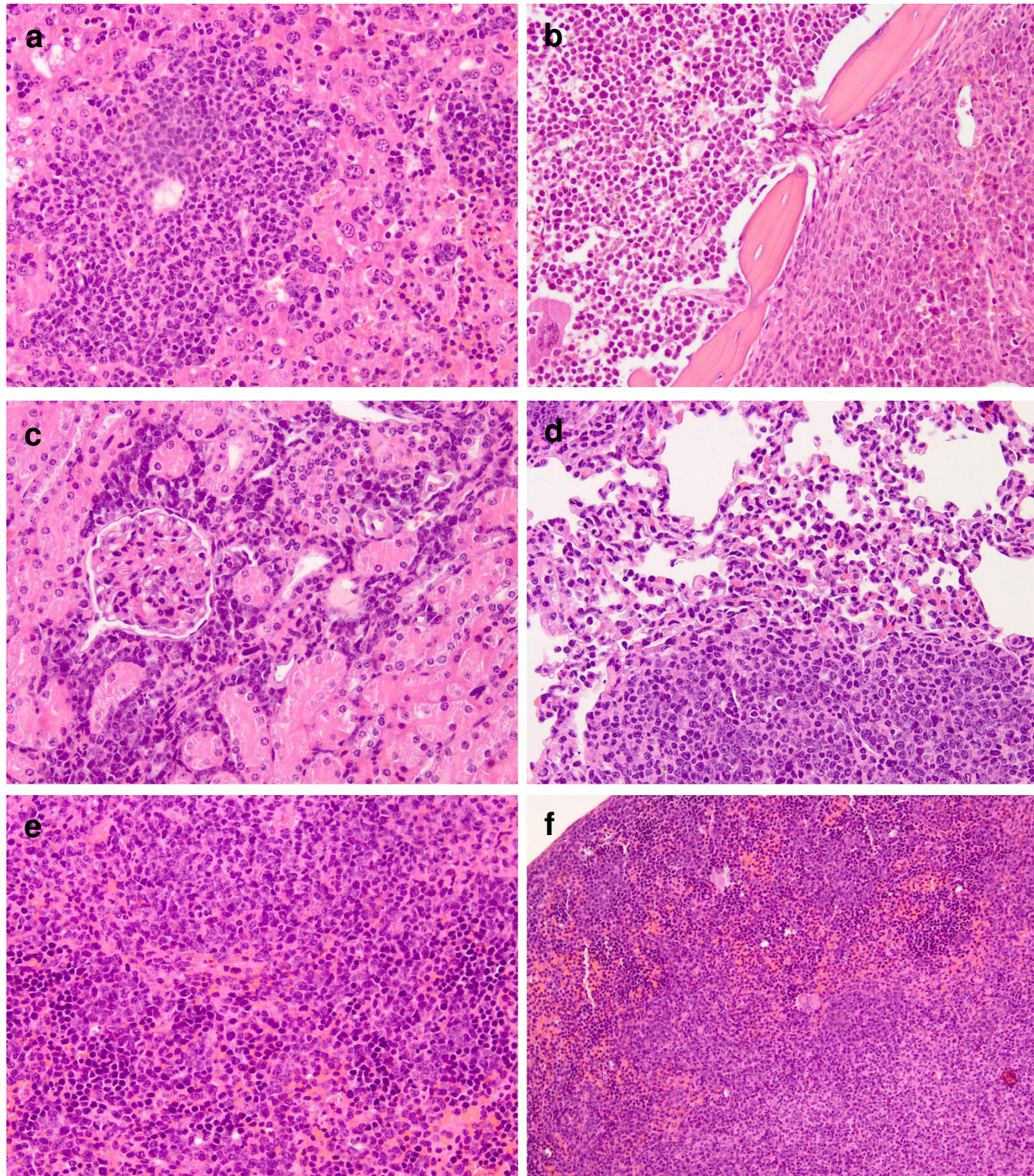


**Supplementary information to Heckl et al., Lentiviral vector induced insertional haploinsufficiency of Ebf1 causes murine leukemia.**



**Supplementary Figure 1: Histopathological analysis of the B-lymphoblastic leukemia**

Leukemic infiltration were found in the (a) liver, (b) bone marrow, (c) kidney, (d) lung, and (e, f) spleen. Hematoxylin&Eosin staining; a-e at 200-fold magnification, f at 100-fold magnification