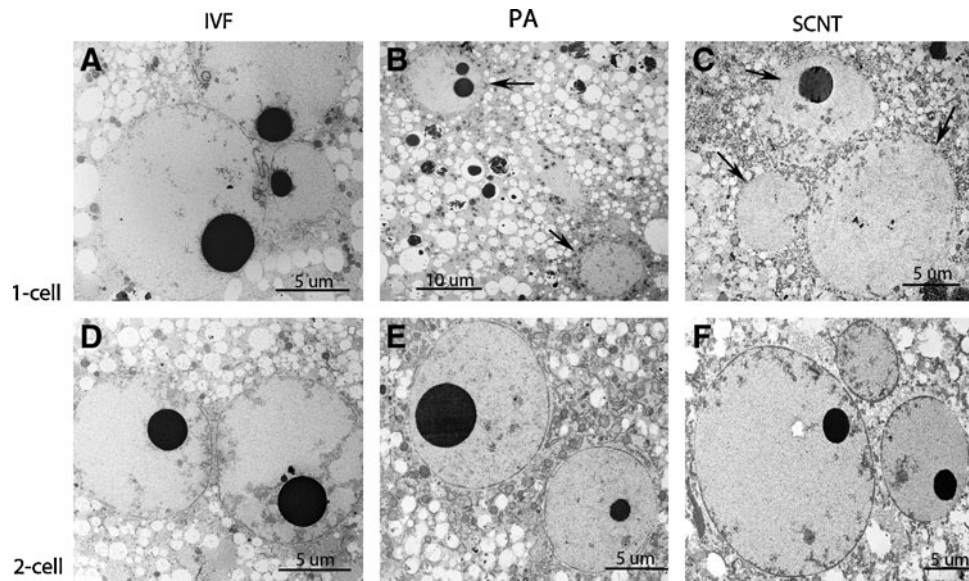
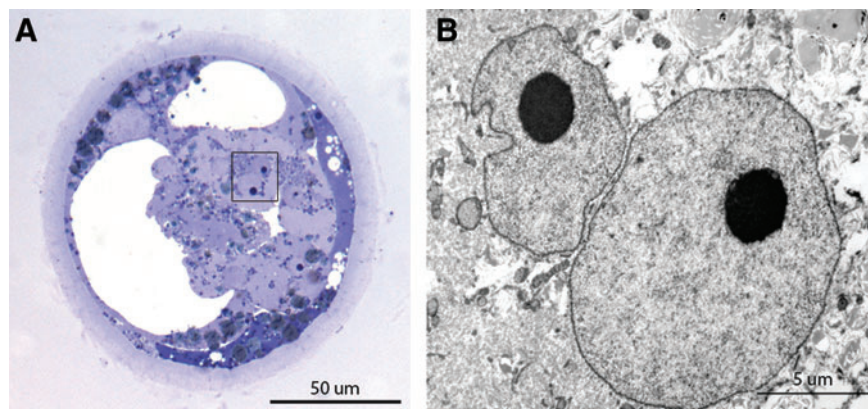


Supplementary Data



SUPPLEMENTARY FIG. S1. Electron micrographs of polynucleated blastomeres found at the one-cell stage (A, B, C) and two-cell stage (D, E, F) in *in vitro* fertilized (A, D), parthenogenetically activated (B, E), and somatic cell nuclear transfer embryos (C, F). Arrows indicate the nuclei.



SUPPLEMENTARY FIG. S2. Representative light micrographic overview of porcine late blastocyst produced by *in vitro* fertilization showing binucleated cells in presumptive inner cell mass (A); enlarged by transmission electron micrograph (B).