

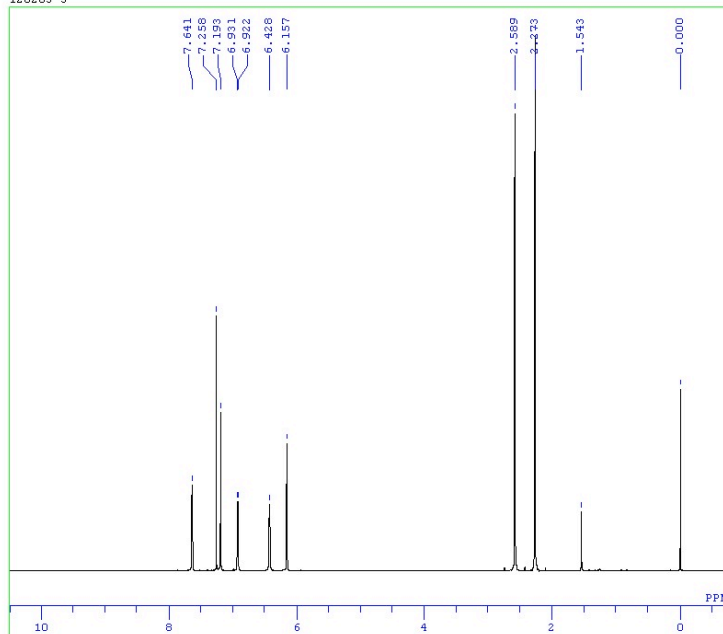
## **Supporting Information for**

### **BODIPY-Based Molecular Probe for Imaging of Cerebral $\beta$ -Amyloid Plaques**

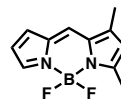
Masahiro Ono\*, Hiroyuki Watanabe, Hiroyuki Kimura, Hideo Saji

Department of Patho-Functional Bioanalysis, Graduate School of Pharmaceutical  
Sciences, Kyoto University, 46-29 Yoshida Shimoadachi-cho, Sakyo-ku, Kyoto  
606-8501, Japan.

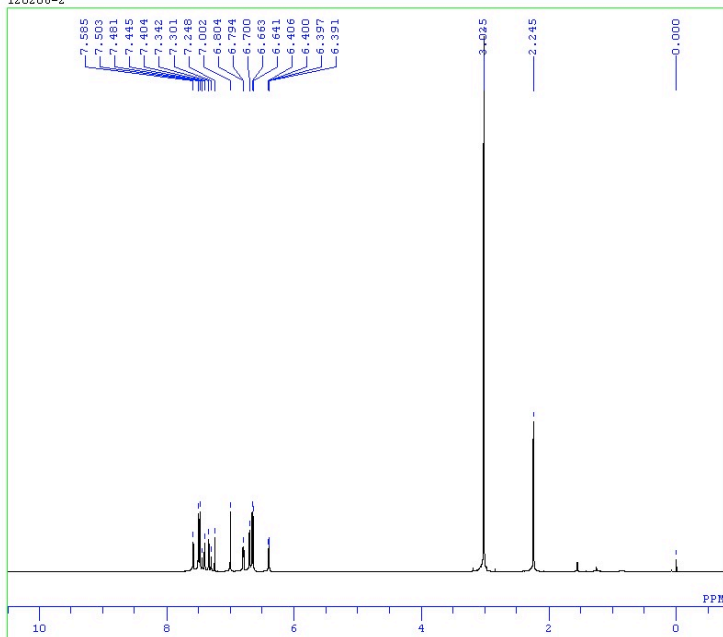
C:\Documents and Settings\analyze\ff\XFNfgfbfv\NMR\k-p2\nc\*NMRf\120203-3 (1-102).als  
120203-3



DFILE C:\Documents and Settings\analyze\ff\XFNfgfbfv\NMR\k-p2\nc\*NMRf\120203-3 (1-102).als  
COMNT 120203-3  
DATIM Fri Feb 03 23:05:10 2012  
OBNUC 1H  
EXMOD NON  
OBFRQ 399.65 MHz  
OBSET 124.00 KHz  
OBFIN 10500.0 Hz  
POINT 32768  
FREQU 7992.0 Hz  
SCANS 16  
ACQTH 4.100 sec  
PD 2.900 sec  
PW1 6.0 us  
IRNUC 1H  
CTEMP 23.3 c  
SLVNT CDCL3  
EXREF 0.00 ppm  
BF 0.12 Hz  
RGAIN 18



C:\Documents and Settings\analyze\ff\XFNfgfbfv\NMR\k-p2\nc\*NMRf\120206-2 (1-102).als  
120206-2



DFILE C:\Documents and Settings\analyze\ff\XFNfgfbfv\NMR\k-p2\nc\*NMRf\120206-2 (1-102).als  
COMNT 120206-2  
DATIM Mon Feb 06 12:23:35 2012  
OBNUC 1H  
EXMOD NON  
OBFRQ 399.65 MHz  
OBSET 124.00 KHz  
OBFIN 10500.0 Hz  
POINT 32768  
FREQU 7992.0 Hz  
SCANS 16  
ACQTH 4.100 sec  
PD 2.900 sec  
PW1 6.0 us  
IRNUC 1H  
CTEMP 23.7 c  
SLVNT CDCL3  
EXREF 0.00 ppm  
BF 0.12 Hz  
RGAIN 15

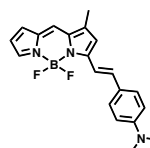


Figure S1. <sup>1</sup>H-NMR spectrum of compound 3 and BAP-1.

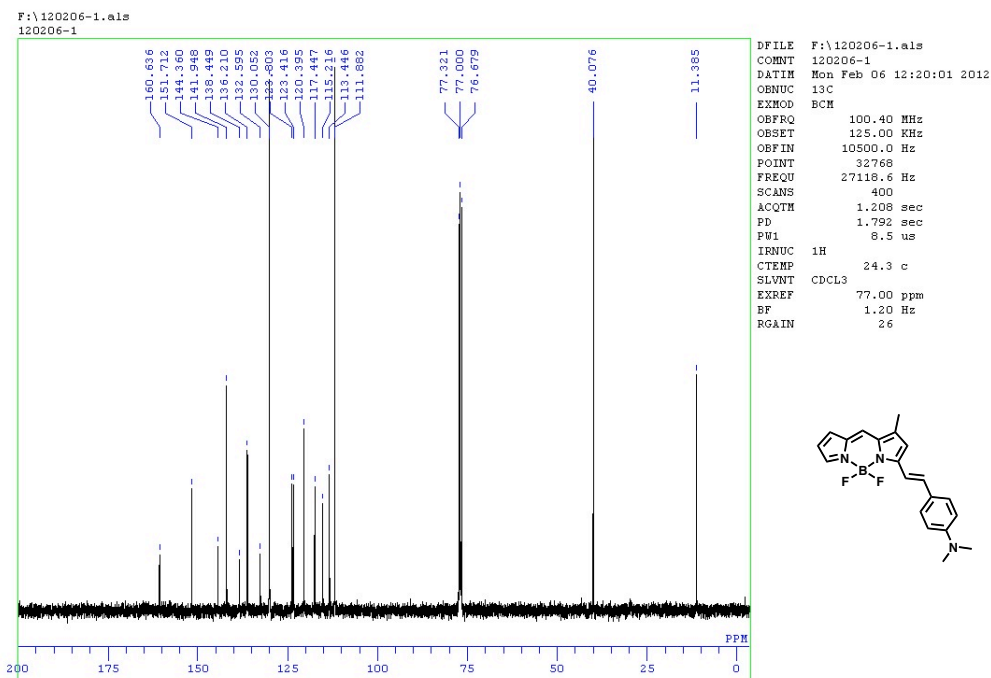
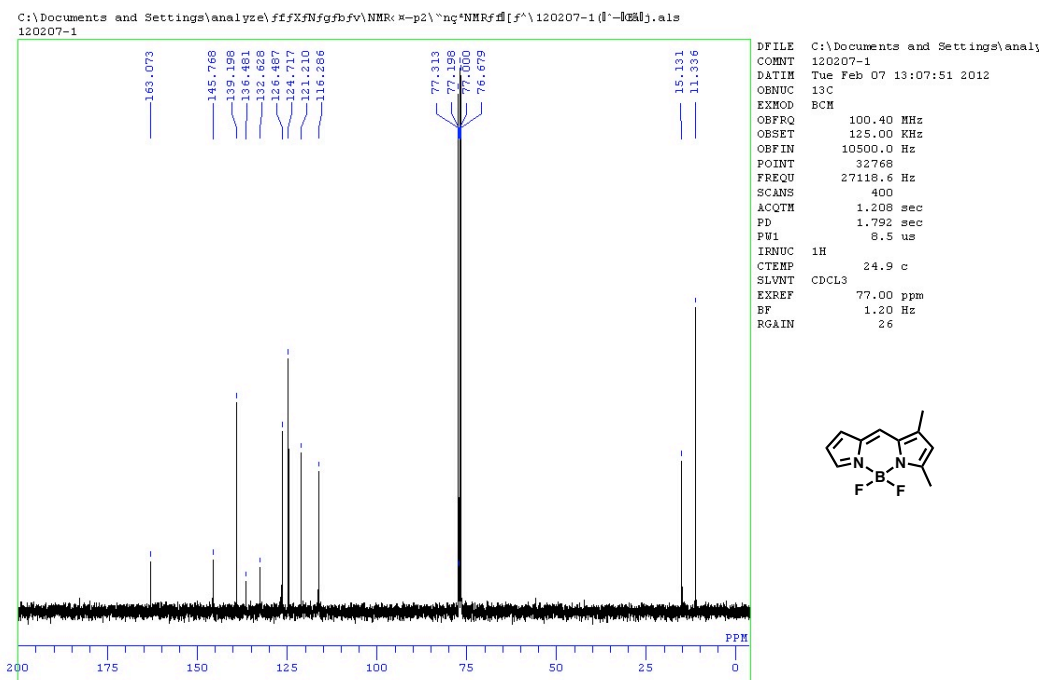
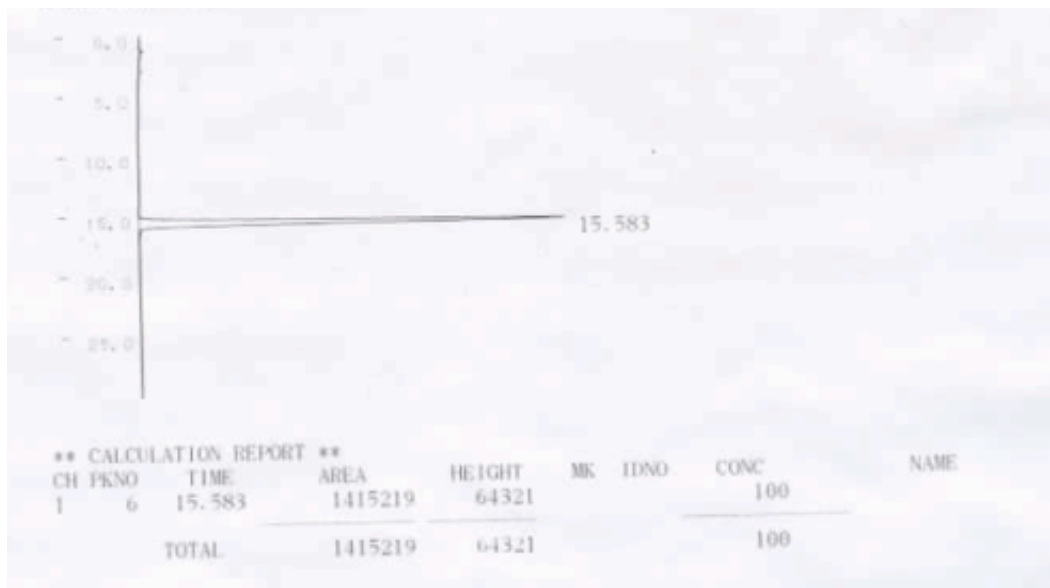


Figure S2. <sup>13</sup>C-NMR spectrum of compound 3 and BAP-1.



**Figure S3.** Reversed-phase HPLC profile of BAP-1. HPLC was performed with a Shimadzu system (a LC-20AO pump with a SPD-20A UV detector,  $\lambda = 254$  nm) using a Cosmosil C18 column (Nacalai Tesque, 5C<sub>18</sub>-AR-II, 4.6 × 150 mm) and acetonitrile/water (3/2) as the mobile phase at a flow rate of 1.0 mL/min.