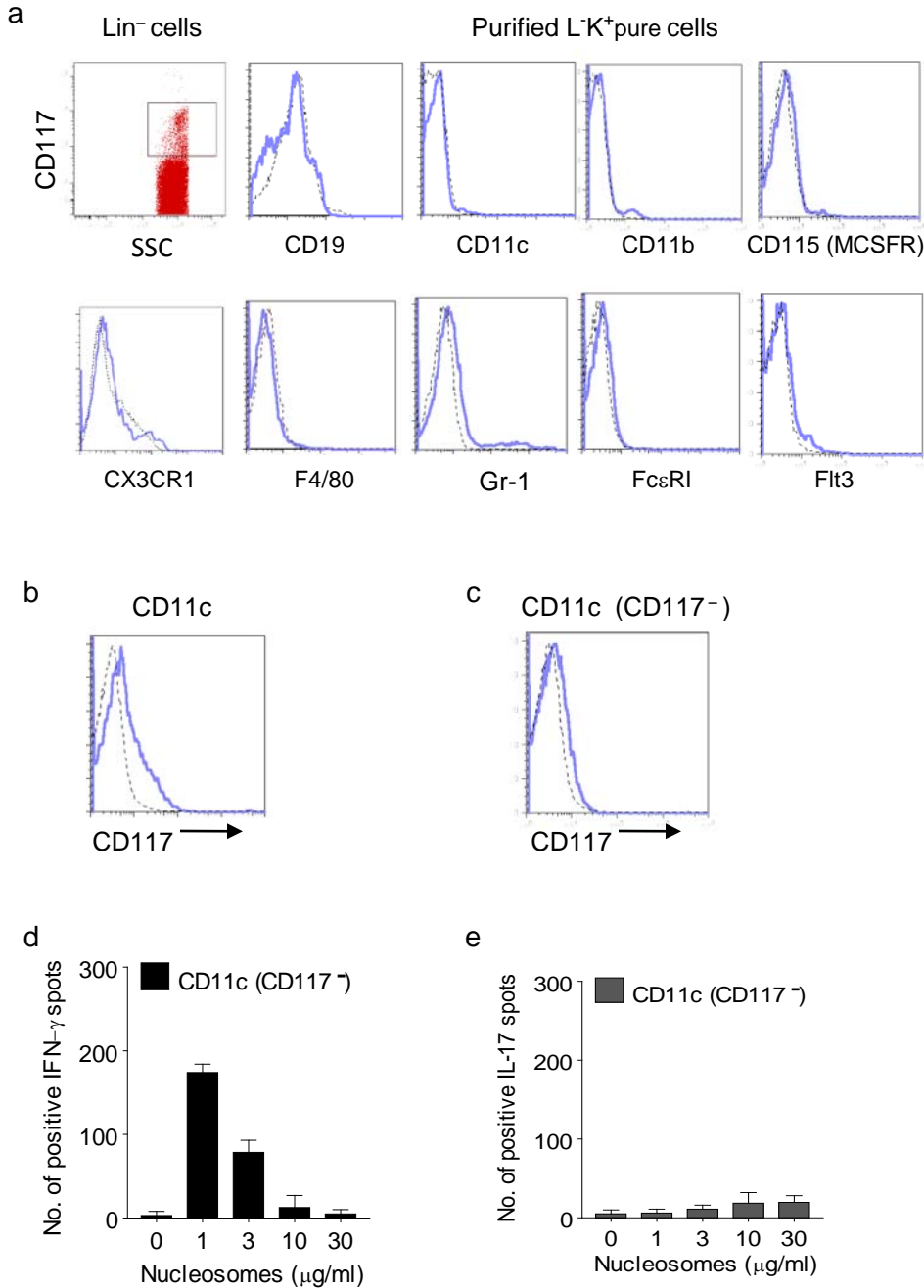


## **ONLINE SUPPLEMENTAL DATA**

--Three Supplemental Figures

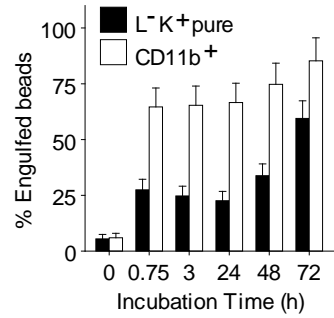
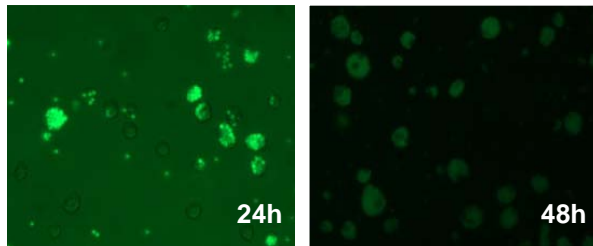
--One Supplemental Table I showing Microarray data.



### Supplemental Figure 1.

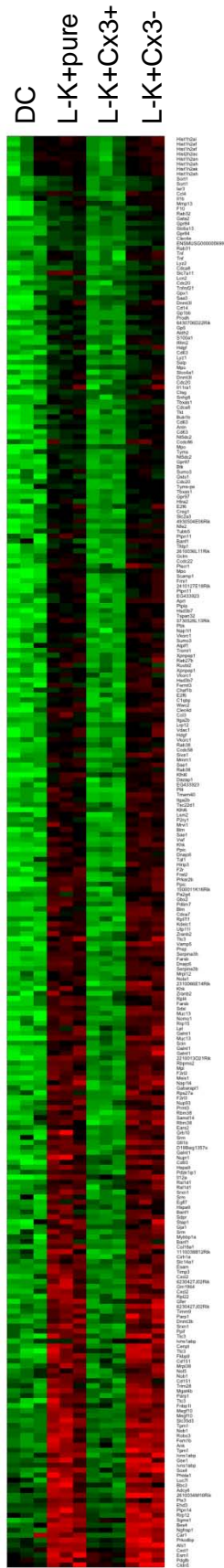
L-K<sup>+</sup>pure cells lack conventional lineage markers (**a**), and c-Kit<sup>-</sup>DCs do not induce Th17 response (**b-e**). **a**, L-K<sup>+</sup>pure cells isolated after double depletion of other cell markers showed no expression of CD19, CD11c, CD11b, CD115, CX3CR1, F4/80, Gr-1, Fc $\epsilon$ RI or Flt3. **b**, DCs (CD11c<sup>+</sup>) isolated without prior depletion of c-Kit<sup>+</sup> cells contains c-Kit<sup>+</sup> cells. **c**, DCs after removal of c-Kit<sup>+</sup> cells contained no c-Kit<sup>+</sup> cells. **d-e**, DCs (c-Kit<sup>-</sup>) induced only Th1 response (**d**), but not Th17 response (**e**).

L-K<sup>+</sup>pure cells = Lin<sup>-</sup>c-Kit<sup>+</sup>pure cells; c-Kit = CD117. Mean  $\pm$  s.e.m of 3 experiments, n = 15 mice.



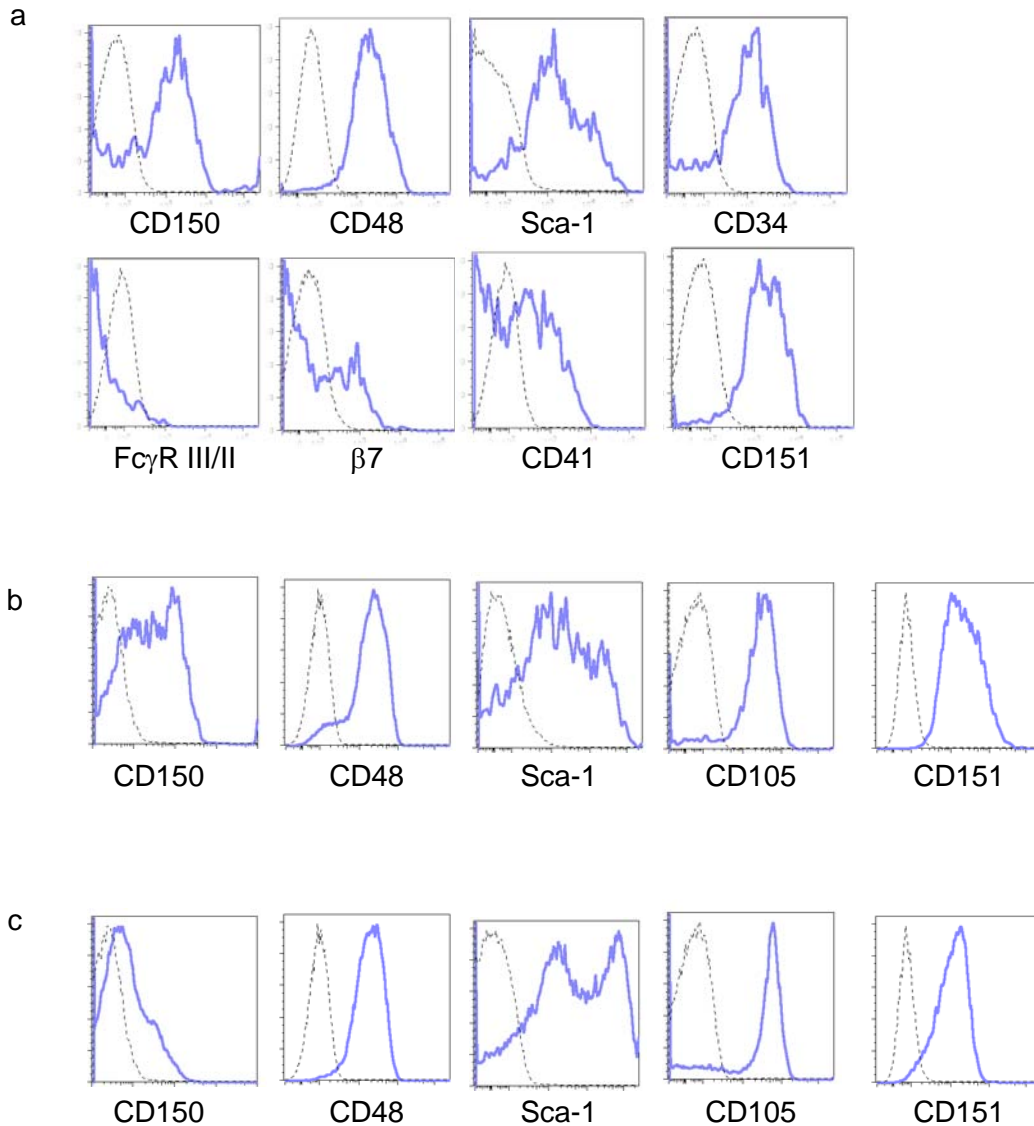
### ***Supplemental Figure 2***

Lin<sup>-</sup>Kit<sup>+</sup>pure cells have phagocytic ability for latex beads. Lin<sup>-</sup>Kit<sup>+</sup>pure cells cultured in SCF for 14 days were incubated with fluoresceinated latex beads (2.0 $\mu$ m diameter) and then analyzed for % of bead bound/engulfed by Lin<sup>-</sup>Kit<sup>+</sup>pure cells and CD11b<sup>+</sup> CD117<sup>low</sup> or <sup>-</sup> cells. (*Left*) Microscopic images of bead bound /engulfed cells shows quenching of the bead fluorescence. (*Right*) % of latex bead engulfed by Lin<sup>-</sup>Kit<sup>+</sup> cells or CD11b<sup>+</sup> cells in FACS analysis.



### Supplemental Figure 3A

Clustering analysis of 1,619 genes that were identified as being differentially expressed (up or down) on the basis of a statistically significant (raw  $P$ -value  $< 0.01$  and false discovery rate adjusted  $P$ -value  $< 0.05$ ), and 1.5-fold change (up or down) in expression level in at least one of the comparisons (see Methods). Each row represents a gene and each column represents each type of APC in triplicate (3 independent isolates). DC = dendritic cells.; L-K+pure= Lin<sup>-</sup>c-Kit<sup>+</sup>pure; L-K+Cx3<sup>-</sup> = Lin<sup>-</sup>c-Kit<sup>+</sup>CX3CR1<sup>-</sup> cells; L-K+Cx3<sup>+</sup> = Lin<sup>-</sup>c-Kit<sup>+</sup>CX3CR1<sup>+</sup> cells. CD11b<sup>+</sup>high (CD11c<sup>-</sup>c-Kit<sup>-</sup>/very low) cells are not shown but were similar to Lin<sup>-</sup>c-Kit<sup>+</sup>CX3CR1<sup>+</sup> cells.



### **Supplemental Figure 3B**

Lin<sup>-</sup>c-Kit<sup>+</sup>pure cells express hematopoietic stem cell / progenitor related markers. Splenocytes were depleted for CD90, CD19, CD11c, CD11b, Gr-1, Fc $\epsilon$ RI, and then c-Kit<sup>+</sup> cells were positively selected, and stained for stem cell / progenitor related markers. **a**, Lin<sup>-</sup>c-Kit<sup>+</sup>pure cells expressed CD150, CD48, Sca-1, CD34, CD41 and other markers shown. **b**, Cell sorted, Lin<sup>-</sup>c-Kit<sup>+</sup>CD41<sup>+</sup> cells from cells in (**a**), expressed CD150, CD48, Sca-1, CD105, and CD151. This cell fraction displayed MkP/MEP like phenotype (Text Fig. 6) although it expressed Sca1. **c**, Lin<sup>-</sup>c-Kit<sup>+</sup> CD41<sup>-</sup>cells also expressed CD151 and CD48, Sca-1, and CD105, but not CD150. This fraction displayed MPP2 like phenotype as shown on the Text Fig. 6A-B.

**Supplemental Table I. Genes with significantly and differentially Up-regulated expression in all four Microarray comparisons**

(Purified Lin<sup>-</sup>c-Kit<sup>+</sup> pure cells = L<sup>-</sup>K<sup>+</sup>pure; Lin<sup>-</sup>c-Kit<sup>+</sup>CX3CR1<sup>-</sup> cell subset = L<sup>-</sup>K<sup>+</sup>Cx<sup>-</sup>; Lin<sup>-</sup>c-Kit<sup>+</sup>CX3CR1<sup>+</sup> subset = L<sup>-</sup>K<sup>+</sup>Cx<sup>+</sup>)

<b>Symbol</b>	<b>EntrezID</b>	<b>L<sup>-</sup>K<sup>+</sup>pure vs. L<sup>-</sup>K<sup>+</sup>Cx<sup>+</sup> Fold Change</b>	<b>L<sup>-</sup>K<sup>+</sup>Cx<sup>-</sup> vs. L<sup>-</sup>K<sup>+</sup>Cx<sup>+</sup> Fold Change</b>	<b>L<sup>-</sup>K<sup>+</sup>pure vs. DC Fold Change</b>	<b>L<sup>-</sup>K<sup>+</sup>Cx<sup>-</sup> vs. DC Fold Change</b>	<b>L<sup>-</sup>K<sup>+</sup>pure vs. L<sup>-</sup>K<sup>+</sup>Cx<sup>+</sup> P Value</b>	<b>L<sup>-</sup>K<sup>+</sup>Cx<sup>-</sup> vs. L<sup>-</sup>K<sup>+</sup>Cx<sup>+</sup> P Value</b>	<b>L<sup>-</sup>K<sup>+</sup>pure vs. DC P Value</b>	<b>L<sup>-</sup>K<sup>+</sup>Cx<sup>-</sup> vs. DC P Value</b>
Muc13	17063	5.29	6.74	17.4	22.2	5.10E-07	7.54E-08	1.62E-10	4.40E-11
Pf4	56744	7.22	6.73	4.95	4.61	2.79E-06	4.45E-06	3.67E-05	6.09E-05
Prkar2b	19088	6.46	6.06	6.66	6.24	7.31E-07	1.18E-06	5.87E-07	9.40E-07
Car1	12346	4.71	6	2.93	3.73	8.26E-05	1.59E-05	0.00245	0.000426
Serpina3h	546546	4.5	5.33	9.45	11.2	0.000659	0.000241	9.12E-06	3.70E-06
Trem1	71326	5.38	5.1	5.41	5.13	8.29E-05	0.000116	8.03E-05	0.000112
Vwf	22371	4.97	5.04	5	5.06	6.82E-05	6.27E-05	6.57E-05	6.04E-05
Samd14	217125	4.21	4.74	3.47	3.91	6.90E-05	2.83E-05	0.000306	0.000121
Itga2b	16399	3.73	4.38	3.57	4.19	0.00123	0.000444	0.00164	0.000589
Cxcl2	20310	5.06	4.33	5.92	5.06	6.03E-07	2.30E-06	1.69E-07	6.00E-07
Col18a1	12822	3.93	4.33	5.35	5.9	2.93E-05	1.30E-05	2.44E-06	1.16E-06
Sdpr	20324	3.8	3.99	4.18	4.4	0.000356	0.000247	0.000179	0.000125
Serpina3b	271047	3.69	3.89	3.65	3.85	4.81E-05	3.03E-05	5.25E-05	3.30E-05
Gfi1b	14582	3	3.76	3.24	4.07	0.000125	1.53E-05	6.05E-05	7.69E-06
Cd14	12475	2.77	3.76	4.09	5.54	0.00197	0.000184	9.70E-05	1.04E-05
Tmem40	94346	3.05	3.57	3.13	3.67	1.33E-07	1.96E-08	9.38E-08	1.43E-08
Nfe2	18022	2.74	3.56	3.2	4.16	3.23E-06	1.42E-07	4.83E-07	2.68E-08
Ppic	19038	3.43	3.44	10.2	10.3	3.44E-07	3.29E-07	2.23E-11	2.17E-11
Cdca7	66953	2.41	3.32	3.08	4.24	3.18E-05	6.40E-07	1.56E-06	4.75E-08
Cxcl1	14825	3.87	3.3	4.49	3.83	3.00E-07	1.64E-06	6.82E-08	3.34E-07
Ahi1	52906	2.37	3.23	2.31	3.14	1.04E-05	1.86E-07	1.54E-05	2.62E-07
F2rl2	14064	2.99	3.22	3.51	3.77	4.00E-04	0.000212	0.000102	5.52E-05
Tpm1	22003	2.76	3.17	2.59	2.99	2.30E-06	4.08E-07	5.10E-06	8.56E-07
Timp3	21859	3.2	3.14	3.4	3.33	8.39E-05	0.000102	4.83E-05	5.82E-05

F2rl3	14065	2.68	2.98	3.56	3.96	3.81E-05	1.17E-05	1.77E-06	6.11E-07
Clec4d	17474	2.81	2.89	3.4	3.51	5.27E-06	3.67E-06	5.61E-07	4.02E-07
Meis1	17268	2.69	2.84	3.82	4.04	2.96E-05	1.59E-05	6.54E-07	3.82E-07
Scin	20259	2.36	2.81	2.5	2.97	0.000595	9.67E-05	0.000328	5.43E-05
Slc2a3	20527	2.9	2.73	2.62	2.46	0.000355	0.000618	0.000882	0.00154
Esam	69524	2.86	2.63	3.43	3.15	0.000412	0.000896	8.19E-05	0.000175
Scamp1	107767	2.64	2.62	4.43	4.4	5.50E-07	6.08E-07	1.04E-09	1.12E-09
Lyz2	17105	2.53	2.61	5.14	5.31	0.000428	0.000305	5.76E-07	4.37E-07
Gp5	14729	2.54	2.59	2.53	2.57	0.00529	0.00464	0.00551	0.00483
P2ry1	18441	2.15	2.56	1.96	2.32	0.0027	0.000489	0.00695	0.00127
Mpl	17480	2.51	2.55	3.14	3.2	0.000453	0.000379	4.76E-05	4.02E-05
Lyz1	17110	2.28	2.55	4.82	5.37	0.0051	0.00203	1.08E-05	4.76E-06
Nt5dc2	70021	1.91	2.5	2.26	2.96	7.22E-05	1.04E-06	4.66E-06	9.92E-08
Ehd3	57440	2.25	2.49	1.93	2.14	5.98E-05	1.51E-05	0.000503	0.000118
Gata2	14461	1.52	2.49	1.76	2.88	0.0673	0.000505	0.0173	0.000117
Tnf	21926	2.03	2.47	1.69	2.06	0.000306	2.20E-05	0.00368	0.00024
F2r	14062	2.14	2.46	3.56	4.09	0.0206	0.00769	0.000511	0.000186
2610034M16Rik	69239	1.97	2.44	2.02	2.49	1.18E-09	1.60E-11	7.09E-10	1.06E-11
Ccl4	20303	2.09	2.42	1.58	1.82	0.00354	0.000847	0.0534	0.0142
Mmp13	17386	1.8	2.39	6.03	8.01	0.166	0.046	0.000341	7.60E-05
Gpr97	54672	2.2	2.36	3.07	3.28	1.35E-08	3.88E-09	6.02E-11	2.33E-11
Bex4	406217	2.16	2.32	2.05	2.21	2.46E-08	6.15E-09	6.33E-08	1.49E-08
Ppif	105675	2.26	2.32	1.96	2.01	0.00147	0.00111	0.0063	0.00479
Pdzk1ip1	67182	2.11	2.32	1.96	2.16	0.0098	0.00439	0.0181	0.00824
Fermt3	108101	2.06	2.29	2.44	2.71	0.00094	0.000263	0.000121	3.56E-05
Blm	12144	2	2.27	1.9	2.15	7.79E-07	7.86E-08	2.28E-06	2.08E-07
Hist1h2af	319173	2.01	2.27	1.67	1.88	0.000893	0.000204	0.00886	0.00203
Ifitm2	80876	1.84	2.26	2.4	2.96	0.000341	1.46E-05	6.05E-06	3.78E-07
Hsd3b7	101502	1.94	2.25	2.91	3.37	9.05E-06	6.78E-07	1.31E-08	1.84E-09
Il1b	16176	1.76	2.25	1.63	2.08	0.0365	0.00463	0.0664	0.00899

Gclm	14630	2.64	2.24	2.52	2.13	1.62E-06	1.70E-05	3.07E-06	3.42E-05
Hist1h2an	319170	2.23	2.24	1.79	1.8	0.000466	0.000439	0.00598	0.00565
Hist1h2ah	319168	2.06	2.23	2.02	2.18	0.00222	0.00094	0.00281	0.00119
Sdsl	257635	1.92	2.22	2.11	2.44	2.16E-06	1.45E-07	3.64E-07	2.95E-08
Rab38	72433	2.1	2.22	3.11	3.27	0.00314	0.00185	6.42E-05	3.88E-05
Galnt1	14423	1.96	2.21	2.26	2.56	6.76E-05	9.99E-06	6.95E-06	1.18E-06
Tal1	21349	2.2	2.2	2.02	2.01	0.00055	0.000566	0.00154	0.00158
Aldh2	11669	2.26	2.19	3.3	3.19	2.75E-05	4.37E-05	2.12E-07	3.12E-07
Gp1bb	14724	2.07	2.18	1.96	2.06	0.00867	0.00552	0.014	0.00897
Sox4	20677	1.9	2.17	2.28	2.6	1.17E-06	9.14E-08	3.69E-08	4.11E-09
Dnmt3b	13436	1.96	2.17	2.46	2.71	0.000156	3.48E-05	5.79E-06	1.49E-06
C1qbp	12261	1.86	2.17	1.67	1.95	0.000404	4.08E-05	0.0021	2.00E-04
Slc35d3	76157	2.5	2.17	2.73	2.37	1.21E-05	7.95E-05	3.89E-06	2.39E-05
Cd63	12512	1.82	2.15	2.39	2.82	4.21E-05	2.11E-06	3.66E-07	3.01E-08
Nomo1	211548	2.17	2.14	2.47	2.44	0.000127	0.000152	2.38E-05	2.82E-05
Clec4e	56619	1.97	2.14	2.06	2.23	0.0029	0.00121	0.00182	0.000759
Mpo	17523	1.85	2.13	15.7	18.2	0.00647	0.00133	7.64E-11	3.38E-11
Nupr1	56312	3.85	2.13	6.17	3.41	2.83E-05	0.00579	6.51E-07	8.15E-05
Cenpt	320394	1.92	2.11	1.96	2.16	6.87E-08	8.61E-09	4.14E-08	5.45E-09
Pbk	52033	1.84	2.09	2.13	2.41	5.46E-05	6.28E-06	4.51E-06	6.20E-07
Hist1h2ak	319169	2.01	2.09	2.07	2.16	0.00293	0.00187	0.00206	0.00131
Ptpn14	19250	2.28	2.08	2.36	2.15	4.73E-07	2.32E-06	2.67E-07	1.26E-06
Hist2h2ac	319176	1.81	2.07	1.52	1.74	0.000862	0.000126	0.0113	0.00164
Adcy6	11512	1.98	2.07	1.64	1.71	0.000496	0.000268	0.0066	0.00357
Atpif1	11983	1.83	2.07	2.09	2.36	0.00363	0.000797	0.000705	0.000157
Siva1	30954	1.59	2.06	1.69	2.19	0.000129	6.50E-07	3.37E-05	2.13E-07
Nap1l4	17955	1.87	2.06	1.97	2.17	3.62E-05	6.34E-06	1.43E-05	2.63E-06
Pdlim7	67399	2.41	2.06	3.22	2.75	4.40E-06	4.57E-05	9.21E-08	6.83E-07
Slco4a1	108115	1.95	2.06	1.89	2	0.00027	0.000117	0.000423	0.000182
Vamp5	53620	1.74	2.05	1.9	2.24	1.92E-08	3.74E-10	2.16E-09	6.14E-11



Cldn5	12741	1.72	2.05	2.03	2.41	0.00154	0.00012	0.000136	1.20E-05
Hdgf	15191	1.93	2.04	2.4	2.54	0.000163	6.90E-05	6.16E-06	2.82E-06
Ccl3	20302	2.17	2.04	2.22	2.09	7.34E-05	0.000176	5.46E-05	0.00013
Aprt	11821	1.69	2.03	1.91	2.3	4.95E-05	1.16E-06	3.92E-06	1.28E-07
Srm	20810	1.99	2.03	1.91	1.95	0.000277	0.000207	0.000493	0.000366
2610036L11Rik	66311	1.8	2.01	1.98	2.21	5.12E-05	6.65E-06	8.92E-06	1.30E-06
Tspan32	27027	1.94	2	2.48	2.56	2.02E-07	1.03E-07	1.89E-09	1.10E-09
Wwc2	52357	1.89	1.99	2.09	2.2	4.53E-05	1.87E-05	8.19E-06	3.55E-06
Dnmt3l	54427	1.74	1.98	2.65	3.03	0.002	0.000293	5.75E-06	1.10E-06
Nop58	55989	1.9	1.98	1.77	1.85	0.00123	0.000714	0.00305	0.00177
Frrs1	20321	1.95	1.97	2.42	2.45	4.26E-07	3.50E-07	7.72E-09	6.56E-09
Rbm38	56190	1.76	1.97	1.56	1.75	0.000106	1.30E-05	0.000982	0.000109
Rbpms2	71973	2.03	1.97	2.06	2.01	0.00168	0.00228	0.00139	0.00189
Selp	20344	2.21	1.97	2.17	1.94	0.00688	0.0177	0.00792	0.0203
Gabarapl1	57436	2.02	1.96	1.89	1.83	3.48E-07	6.30E-07	1.40E-06	2.64E-06
Rab31	106572	1.51	1.96	1.96	2.55	0.00302	2.71E-05	2.63E-05	4.07E-07
Esm1	71690	2.04	1.96	3.07	2.94	4.01E-05	7.91E-05	1.24E-07	2.15E-07
Gja1	14609	1.94	1.96	2.82	2.85	0.000209	0.000181	1.12E-06	9.91E-07
Hist1h2ai	319191	1.8	1.96	1.6	1.75	0.00118	0.00034	0.0064	0.00185
2010107H07Rik	66487	1.57	1.95	1.86	2.32	0.000114	9.33E-07	2.52E-06	3.79E-08
Grb10	14783	2.37	1.93	2.75	2.24	2.57E-07	9.25E-06	2.67E-08	6.76E-07
Gbx2	14472	2.03	1.93	2.09	1.99	0.000105	0.000222	6.68E-05	0.00014
Gpx1	14775	1.63	1.92	1.6	1.89	0.00388	0.000331	0.00474	0.000403
Cd151	12476	1.9	1.92	2.15	2.17	0.00376	0.00336	0.000925	0.000828
Gsto1	14873	1.74	1.9	1.96	2.14	0.0029	0.000833	0.000562	0.000164
Cd93	17064	1.63	1.89	2.34	2.71	0.000159	8.27E-06	1.75E-07	1.76E-08
Vkorc1	27973	1.75	1.89	1.91	2.06	0.000336	9.44E-05	7.53E-05	2.21E-05
Ccdc86	108673	1.61	1.89	1.54	1.8	0.0029	0.000238	0.0062	0.000508
Timm9	30056	1.9	1.89	2.07	2.06	0.00348	0.0036	0.00129	0.00133
Dnajc6	72685	1.97	1.87	2.17	2.06	1.48E-07	4.50E-07	2.19E-08	6.08E-08

Chaf1b	110749	1.63	1.87	1.64	1.88	0.00025	1.63E-05	0.000223	1.47E-05
Gar1	68147	1.82	1.87	1.92	1.97	0.000485	0.000333	0.000214	0.000148
Fam65a	75687	1.57	1.86	1.52	1.81	1.22E-05	1.78E-07	2.62E-05	3.40E-07
Egfl7	353156	1.7	1.86	1.98	2.17	0.000344	6.41E-05	2.31E-05	4.85E-06
Tymmps	22172	1.63	1.86	1.5	1.71	0.0011	0.000112	0.00503	0.000503
Khk	16548	1.66	1.85	1.75	1.95	3.89E-06	2.94E-07	1.07E-06	9.18E-08
Trim28	21849	1.65	1.85	1.61	1.8	0.00442	0.000883	0.00645	0.0013
Tnfrsf21	94185	1.73	1.84	2.1	2.24	0.000162	4.91E-05	4.80E-06	1.65E-06
Fnbp1l	214459	1.75	1.84	2.35	2.46	0.00119	0.000574	1.60E-05	8.27E-06
1110038B12Rik	68763	1.97	1.83	1.65	1.53	3.73E-06	1.61E-05	0.000132	0.000662
Lpl	16956	1.62	1.83	2.08	2.36	0.0323	0.00913	0.00241	0.000639
Prkcdbp	109042	1.74	1.82	1.86	1.94	2.44E-07	8.65E-08	4.92E-08	1.88E-08
Rpl7l1	66229	1.56	1.82	1.53	1.78	0.000127	4.14E-06	0.000215	6.68E-06
Parp1	11545	1.7	1.82	1.61	1.73	4.30E-05	1.06E-05	0.000133	3.12E-05
Ank	11732	1.82	1.82	2.2	2.19	0.000856	0.000892	5.69E-05	5.92E-05
Ptpla	30963	1.74	1.81	1.8	1.87	6.17E-07	2.61E-07	2.84E-07	1.23E-07
Srxn1	76650	2.2	1.81	1.95	1.61	1.21E-05	0.000262	8.17E-05	0.00199
6230427J02Rik	68176	1.58	1.8	1.53	1.74	3.48E-05	1.64E-06	8.49E-05	3.66E-06
S100a1	20193	1.65	1.8	2.26	2.46	3.00E-04	5.79E-05	1.07E-06	2.73E-07
Plscr1	22038	1.6	1.8	1.97	2.22	0.00716	0.00132	0.000371	7.09E-05
Btk	12229	1.6	1.79	1.68	1.88	2.19E-05	1.47E-06	6.87E-06	5.15E-07
Lrp12	239393	1.59	1.79	2.02	2.26	0.00156	0.000214	2.73E-05	4.45E-06
Nap1l1	53605	1.67	1.77	1.64	1.74	0.000169	5.08E-05	0.000238	7.10E-05
Rrp12	107094	1.69	1.77	1.6	1.67	0.000543	0.000255	0.00145	0.000675
Tyms	22171	1.7	1.77	1.84	1.91	0.00139	0.000776	0.000425	0.000239
Lsm2	27756	1.62	1.76	1.51	1.65	8.51E-06	1.11E-06	4.92E-05	5.70E-06
Klhdc10	76788	1.76	1.76	2	2	4.16E-06	4.24E-06	2.62E-07	2.67E-07
Tfdp1	21781	1.71	1.76	1.98	2.04	3.10E-05	1.65E-05	1.68E-06	9.55E-07
Rpl22	19934	1.7	1.76	1.91	1.97	3.25E-05	1.70E-05	2.97E-06	1.64E-06
Xpnpep1	170750	1.59	1.76	1.98	2.19	0.0114	0.00292	0.000621	0.000158

Tsc22d1	21807	1.74	1.76	1.94	1.96	0.0124	0.011	0.00369	0.00326
Hirip3	233876	1.68	1.74	1.7	1.76	2.51E-05	1.19E-05	2.14E-05	1.02E-05
Mrpl12	56282	1.5	1.74	1.54	1.78	0.00504	0.000375	0.00325	0.000243
Stap1	56792	1.83	1.74	2.1	2	0.00146	0.00286	0.000224	0.000435
Cdca8	52276	1.55	1.74	1.86	2.09	0.0233	0.00567	0.00251	0.000583
Ears2	67417	1.53	1.74	1.52	1.73	0.0365	0.00904	0.0385	0.00957
Frat2	212398	1.67	1.73	1.87	1.93	1.07E-05	5.07E-06	8.40E-07	4.28E-07
Ngfrap1	12070	1.56	1.73	1.89	2.1	0.000119	1.11E-05	1.70E-06	2.20E-07
Tkt	21881	1.64	1.73	1.83	1.93	0.00421	0.00196	0.000857	4.00E-04
Utp11l	67205	1.6	1.72	1.53	1.64	3.41E-07	4.34E-08	1.36E-06	1.53E-07
Il12a	16159	1.6	1.72	3.13	3.36	2.76E-05	5.07E-06	1.11E-10	4.18E-11
Gpr84	80910	1.53	1.72	3.08	3.46	0.00168	0.000185	1.81E-08	4.09E-09
Gse1	382034	1.67	1.72	1.63	1.67	0.000448	0.000273	0.000753	0.000458
Sae1	56459	1.56	1.72	1.79	1.97	0.00253	0.00046	0.000233	4.47E-05
Mybbp1a	18432	1.66	1.72	1.77	1.83	0.00443	0.00289	0.00185	0.0012
2210013O21Rik	70123	1.83	1.71	2.53	2.35	3.41E-06	1.58E-05	8.72E-09	2.84E-08
Ivns1abp	117198	1.64	1.71	1.58	1.65	0.000225	9.89E-05	0.000455	0.000198
Ctsg	13035	1.51	1.71	5.71	6.48	0.0302	0.00674	1.34E-08	4.73E-09
Lcn2	16819	2.19	1.71	9.28	7.25	0.0015	0.0191	4.78E-09	2.76E-08
Rab32	67844	1.55	1.7	2.44	2.68	0.0276	0.00944	0.000124	4.22E-05
Ccdc22	54638	1.64	1.69	1.7	1.74	6.33E-07	3.04E-07	2.59E-07	1.28E-07
Creg1	433375	1.81	1.69	1.85	1.73	1.56E-06	7.49E-06	8.73E-07	4.05E-06
Slc7a11	26570	2.39	1.69	2.58	1.82	2.85E-06	0.000775	9.74E-07	0.000221
Fkbp9	27055	1.58	1.68	1.86	1.98	4.42E-07	7.12E-08	5.25E-09	1.18E-09
Luc7l	66978	1.63	1.68	1.52	1.57	0.000101	5.43E-05	0.000474	0.00025
Rrp15	67223	1.55	1.68	1.78	1.93	0.00419	0.00118	0.00044	0.000126
Phlda1	21664	1.99	1.68	2.03	1.72	0.000346	0.00359	0.000254	0.00263
Il11ra1	16157	1.61	1.68	1.73	1.81	0.0111	0.00626	0.00419	0.00234
Kdelc1	72050	1.76	1.67	1.95	1.85	5.05E-08	1.99E-07	4.65E-09	1.58E-08
Ttc3	22129	1.62	1.67	1.89	1.95	3.37E-06	1.55E-06	7.68E-08	3.95E-08

Megf10	70417	1.76	1.67	1.83	1.73	0.000184	0.000497	0.000101	0.000269
D19Bwg1357e	52874	1.81	1.67	1.78	1.64	0.000301	0.00115	0.000396	0.00151
Ccdc58	381045	1.66	1.66	1.81	1.81	3.32E-05	3.27E-05	5.08E-06	5.01E-06
Sgms1	208449	1.51	1.66	2.28	2.51	0.00943	0.00225	1.94E-05	5.24E-06
Pdgfb	18591	1.5	1.66	1.55	1.71	0.0143	0.00333	0.00926	0.00213
Cdc20	107995	1.64	1.65	1.72	1.73	0.000263	0.000231	0.000101	8.90E-05
Prep	19072	1.55	1.65	1.7	1.81	0.000934	0.000285	0.000158	4.99E-05
Gfer	11692	1.81	1.65	2.14	1.95	0.000109	0.000587	6.13E-06	2.92E-05
Banf1	23825	1.7	1.65	1.57	1.53	0.0038	0.00562	0.0107	0.0156
Tubb5	22154	1.53	1.65	1.95	2.1	0.0162	0.00613	0.000627	0.000233
Sumo3	20610	1.62	1.63	1.61	1.63	1.12E-05	9.47E-06	1.16E-05	9.80E-06
Vdac1	22333	1.61	1.63	1.77	1.79	8.64E-05	6.90E-05	1.12E-05	9.10E-06
Fam63a	75007	1.72	1.63	2.5	2.37	0.000927	0.00226	3.00E-06	6.55E-06
6430706D22Rik	381280	1.52	1.63	1.9	2.03	0.00912	0.00334	0.000323	0.000119
1500011K16Rik	67885	1.67	1.62	1.74	1.69	1.45E-06	3.09E-06	5.33E-07	1.10E-06
Slc6a13	14412	1.5	1.62	2.06	2.23	0.00109	0.000211	1.82E-06	4.63E-07
Zranb2	53861	1.67	1.62	1.85	1.8	0.00077	0.00129	0.000125	0.000207
Rps27a	78294	1.5	1.62	1.5	1.62	0.00842	0.00232	0.00867	0.00239
Fem1b	14155	1.55	1.61	1.6	1.67	4.84E-05	1.78E-05	2.11E-05	7.95E-06
E2f6	50496	1.65	1.61	1.93	1.88	4.23E-05	7.69E-05	1.57E-06	2.68E-06
ENSMUSG00000069996	1E+08	1.51	1.61	1.65	1.75	0.00533	0.00196	0.00129	0.000472
Rsl1d1	66409	1.56	1.61	1.67	1.72	0.00453	0.00285	0.00165	0.00104
Hspa9	15526	1.9	1.61	2.05	1.74	0.000217	0.00292	6.40E-05	0.000831
Mrvi1	17540	1.72	1.61	1.64	1.54	0.00406	0.00933	0.00769	0.0174
Saa3	20210	1.74	1.61	10.2	9.45	0.057	0.0965	1.21E-07	1.95E-07
Dazap1	70248	1.56	1.6	1.54	1.58	4.63E-06	2.11E-06	6.73E-06	3.03E-06
Robo3	19649	1.58	1.6	1.58	1.6	2.77E-05	2.11E-05	2.84E-05	2.16E-05
Klhl6	239743	1.57	1.6	2.49	2.54	0.00172	0.00121	8.31E-07	6.26E-07
Nob1	67619	1.57	1.6	1.62	1.65	0.00177	0.00137	0.00101	0.00078
Ptpn11	19247	1.65	1.59	1.74	1.68	0.000328	0.000659	0.000106	0.000211

Farsb	23874	1.64	1.58	1.84	1.78	4.00E-05	9.03E-05	2.93E-06	6.19E-06
Prodh	19125	1.58	1.58	1.66	1.67	0.000152	0.000138	4.78E-05	4.36E-05
Cirh1a	21771	1.58	1.58	1.5	1.5	0.000484	0.000494	0.00146	0.00149
Anln	68743	1.6	1.58	1.75	1.73	0.000533	0.000682	9.85E-05	0.000125
5730528L13Rik	66665	1.57	1.57	1.8	1.8	7.14E-05	6.85E-05	2.94E-06	2.83E-06
Bub1b	12236	1.6	1.57	1.73	1.7	4.61E-05	7.51E-05	7.82E-06	1.24E-05
Nup93	71805	1.61	1.57	1.78	1.73	0.000106	0.000205	1.23E-05	2.29E-05
Ruvbl2	20174	1.62	1.57	1.73	1.68	0.000895	0.00152	0.000272	0.000459
Tbxas1	21391	1.83	1.56	1.96	1.67	9.60E-05	0.00174	3.03E-05	0.000517
Sort1	20661	1.69	1.56	1.96	1.81	0.000573	0.00228	4.47E-05	0.000169
Mmrn1	70945	1.86	1.56	2.02	1.7	0.00409	0.029	0.00154	0.0115
EG433923	433923	1.53	1.55	1.62	1.64	0.000126	8.66E-05	3.28E-05	2.28E-05
Htra2	64704	1.52	1.55	1.66	1.69	0.00193	0.00128	0.00036	0.00024
Mrpl38	60441	1.56	1.55	1.68	1.67	0.00222	0.00253	0.000641	0.000727
Rab27b	80718	1.54	1.55	1.67	1.68	0.00312	0.00282	0.000724	0.000655
Slc14a1	108052	1.55	1.55	1.56	1.57	0.0115	0.0112	0.0101	0.00978
F10	14058	1.61	1.55	3.86	3.71	0.166	0.202	0.000737	0.000959
Mgat4b	103534	1.5	1.54	1.53	1.57	0.000248	0.00014	0.000155	8.81E-05
Ptx3	19288	1.69	1.54	1.78	1.63	0.000252	0.00144	9.04E-05	0.000504
Ier3	15937	1.57	1.53	1.59	1.55	0.00595	0.00843	0.00491	0.00696
Gm1964	432628	1.67	1.52	1.7	1.54	3.60E-05	0.000342	2.69E-05	0.000252
Rpl4	67891	1.67	1.52	2.23	2.03	0.000308	0.00186	1.88E-06	9.15E-06
Prmt3	71974	1.69	1.51	1.72	1.53	0.000657	0.0046	0.000517	0.00362
Pa2g4	18813	1.54	1.51	1.58	1.55	0.00972	0.013	0.00652	0.00874
Bbc3	170770	2.02	1.5	2.08	1.54	0.00153	0.045	0.00112	0.0339