

Supplemental Figure 1

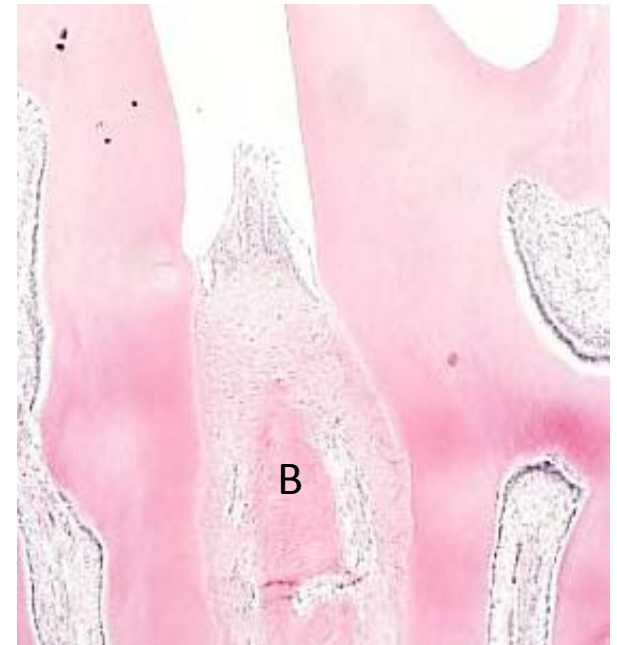
Baseline



Infected



Antibiotic



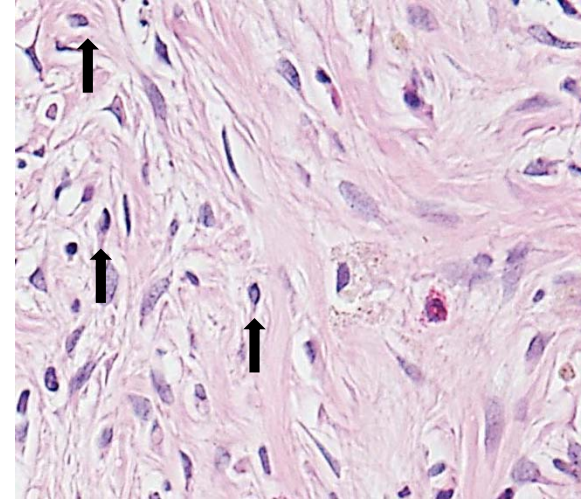
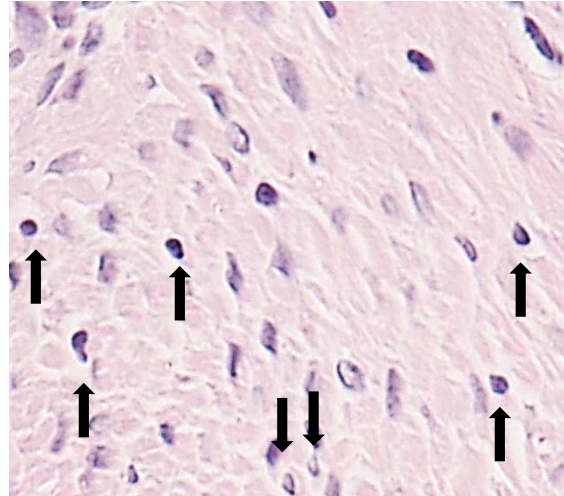
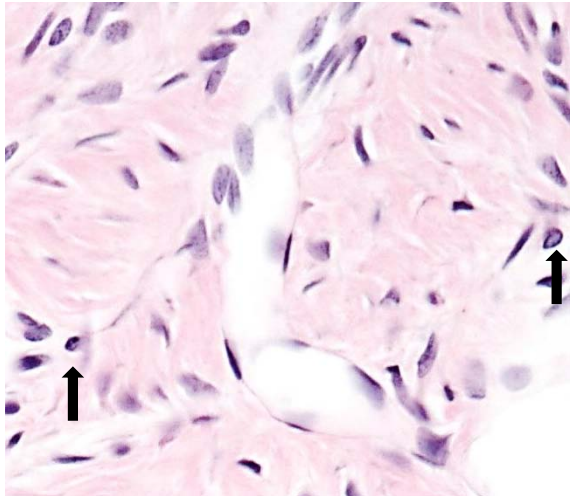
H &E stained sagittal section taken from GK diabetic rats at baseline, 5 weeks following *Aa* infection and *Aa* infection with antibiotic treatment for the last week.
B= bone

Supplemental Figure 2

Baseline

Infected

Antibiotic



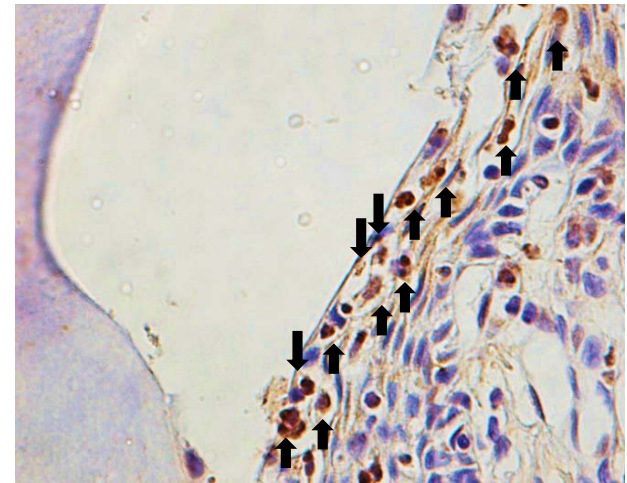
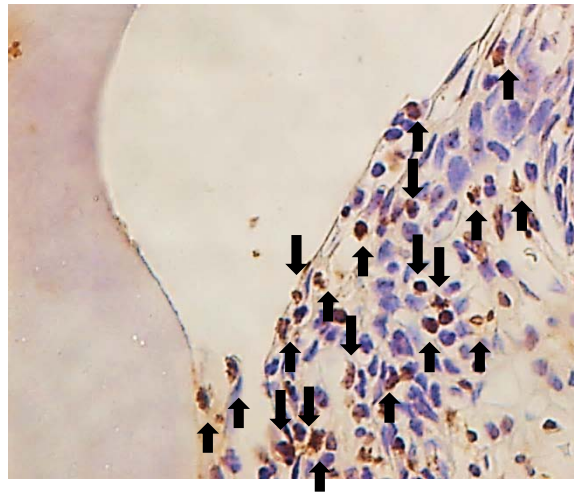
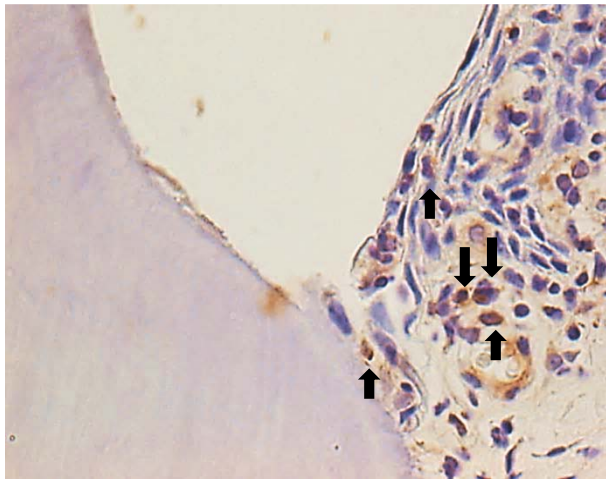
H &E stained sagittal section taken from sub-epithelial gingival connective tissue of GK diabetic rats at baseline, 5 weeks following *Aa* infection and *Aa* infection with antibiotic treatment for the last week. Arrows point to polymorphonuclear leukocytes.

TNF- α

Baseline

Infected

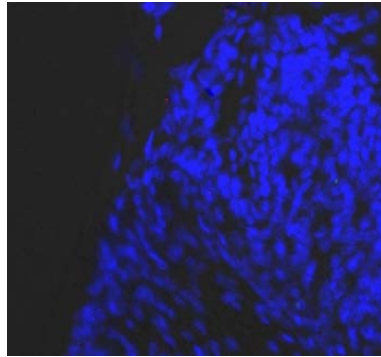
Antibiotic



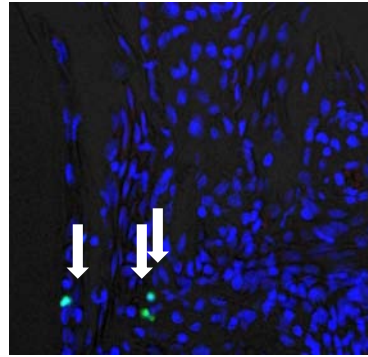
TNF expression in the epithelium of GK diabetic rats was assessed by immunohistochemistry with an anti-TNF- α specific antibody at baseline, 5 weeks following *Aa* infection and *Aa* infection with antibiotic treatment for the last week. No immunopositive cells were detected with matched control antibody (data not shown). Arrows point to TNF- α immunopositive cells (but not all positive cells).

Supplemental Figure 4

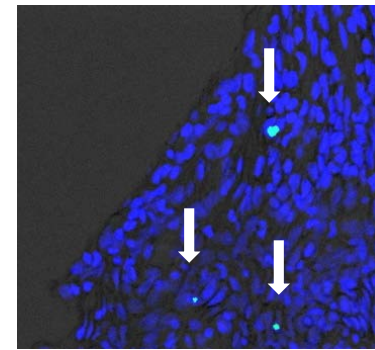
Baseline



Infected



Antibiotic



Apoptotic cells in the gingival epithelium of diabetic rats were detected by the TUNEL assay in histologic sections taken at baseline, 5 weeks following *Aa* infection and *Aa* infection with antibiotic treatment for the last week. Sections were counterstained with DAPI to show nuclei. Arrows point to TUNEL positive cells.