

Supporting Information:

Table S1. Amino acid analysis of EMHP-CBD2 before and after crosslinking with HMDI.

	Lys/Ala	Asp/Ala	Arg/Ala	Ser/Ala
Before crosslinking	0.4 ± 0.03	0.1 ± 0.004	0.1 ± 0.002	0.1 ± 0.01
After crosslinking	0.1 ± 0.01	0.1 ± 0.03	0.1 ± 0.01	0.1 ± 0.004

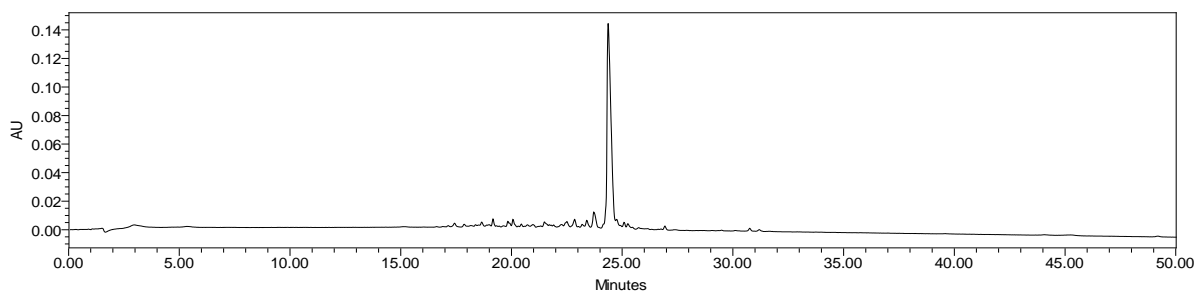


Figure S1. Analytical HPLC of X(AKAAAKA)₂XGGRGDSPG, 5-55% acetonitrile gradient in water with 0.1% TFA. Detection at 214 nm.

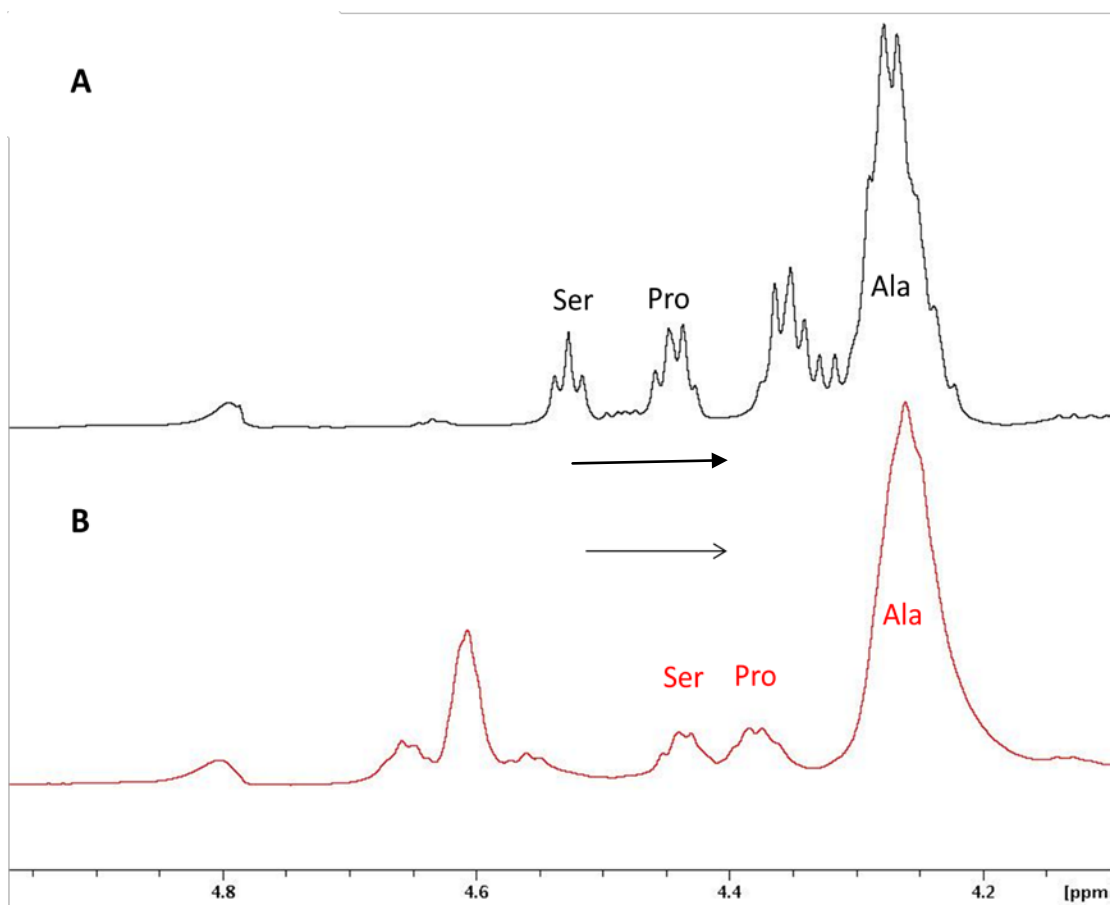


Figure S2. Peptide α -CH regions from Figures 3A and 3B expanded from 4.1 to 5.0 ppm for AK2-CBD2 peptide (A, black) and EMHP-CBD2 (B, red).

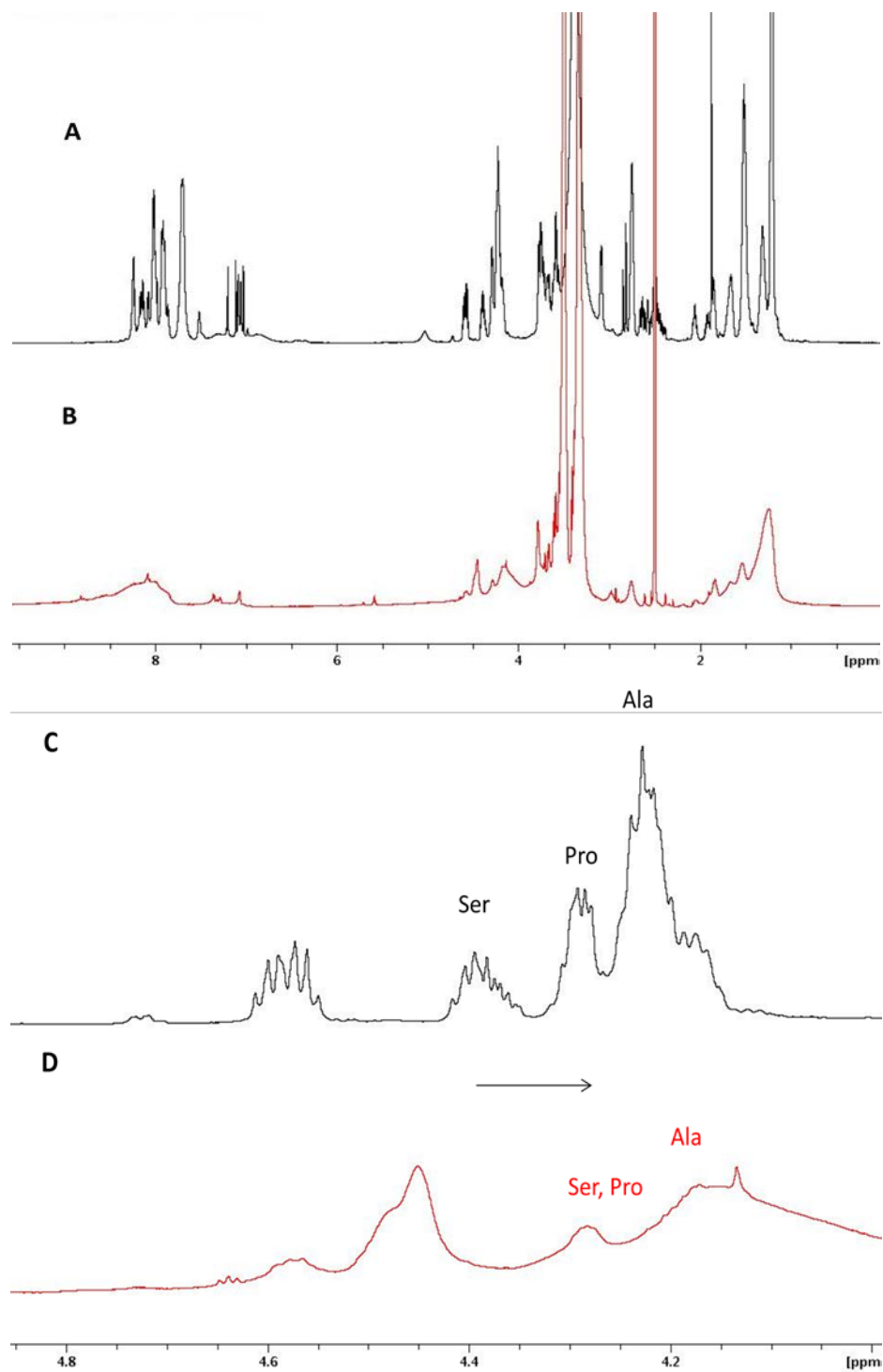


Figure S3: ^1H NMR spectra in DMSO with water suppression by presaturation. A: AK2-CBD2 peptide (black); B: EMHP-CBD2 (red); C: Peptide α -CH region expanded from 4.0 to 4.8 ppm for AK2-CBD2 peptide (black); D: Peptide α -CH region expanded from 4.0 to 4.8 ppm for EMHP-CBD2 (red).