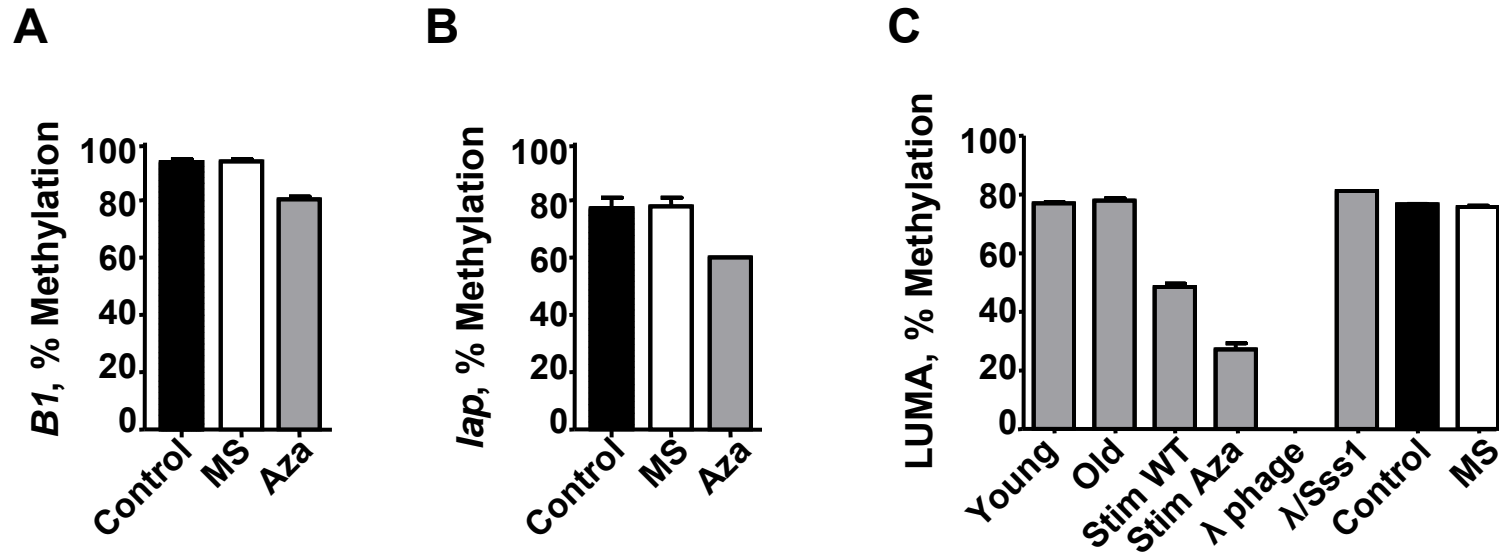


Online Supporting Material



Supplemental Figure 3. Estimating global methylation of T cells from F1 control and MS mice via pyrosequencing of the B1 repetitive element (A), IAP repetitive element (B), or the LUMA method, using WT C57Bl/6 murine resting T cells, stimulated T cells, 5-azacytidine treated T cells, and methylated or unmethylated λ phage as controls (C). Results are mean \pm SEM, $n = 6$ (A), $n = 3$ (B), $n = 7$ (C). Aza = 5-azacytidine treatment, B1 = B1 element, *lap* = Intracisternal alpha particle, LUMA = Luminometric Methylation Assay, MS = micronutrient supplemented diet, Stim = PHA stimulated cells, Sss1 = Sss1 methylase treatment, WT = wild type.