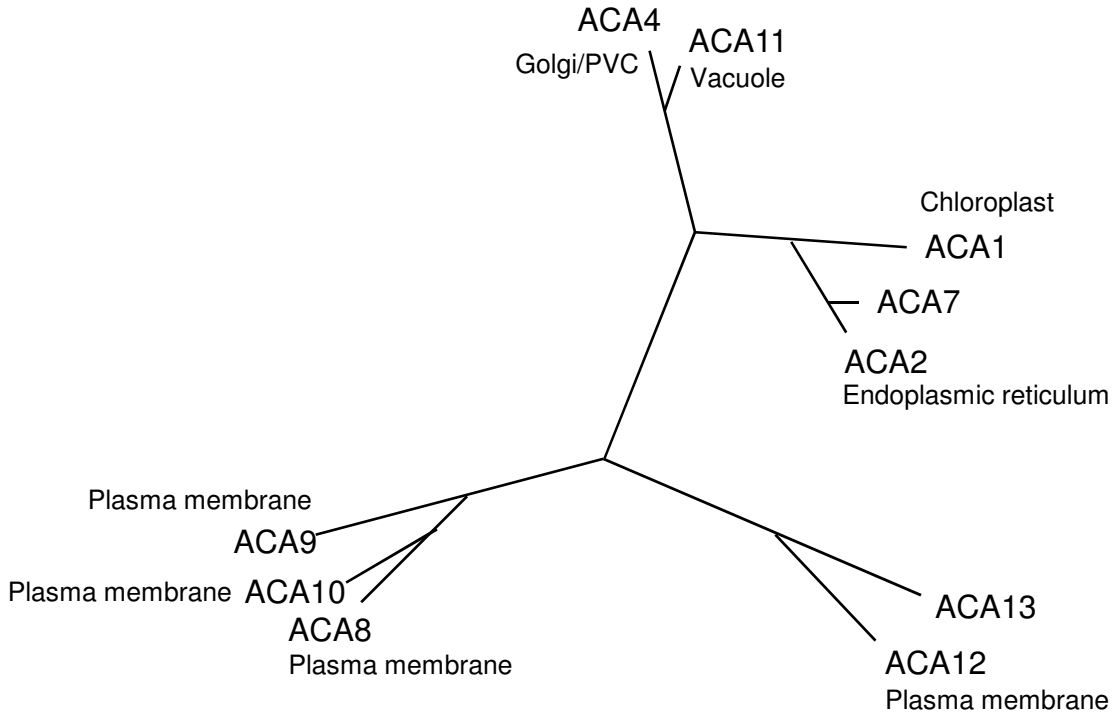


Supplementary figure 1.

A



B



C

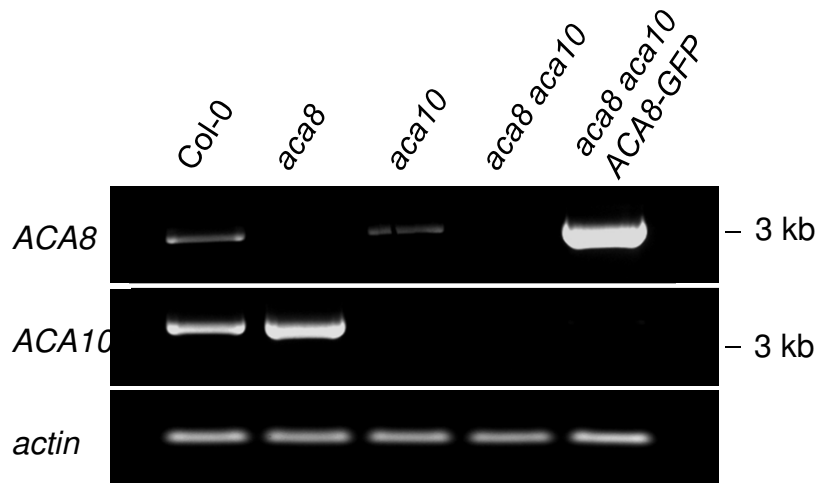


Figure S1. Characterization of *ACA8* and *ACA10* loss-of-function lines. **A.** The family of autoinhibited Ca^{2+} ATPases (ACAs) in Arabidopsis; phylogenetic tree adapted from Baxter et al., 2003. Subcellular localization of ACA proteins is indicated when known. **B.** Intron-exon structure of *ACA8* and *ACA10*. Arrowheads indicate the positions of the T-DNA insertions; the arrow indicates the position of the point mutation leading to the Q70* mutation in *ACA8*. Grey boxes, un-translated regions; white boxes, exons. **C.** RT-PCR confirmation of *aca8* and *aca10* knock-out alleles as well as an *aca8 aca10 ACA8-GFP* complemented line.