

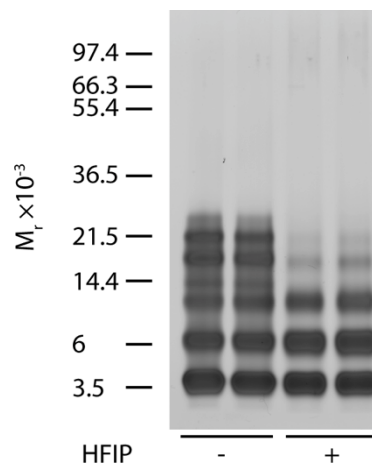
# A Key Role for Lysine Residues in Amyloid $\beta$ -Protein Folding, Assembly, and Toxicity

Sharmistha Sinha<sup>1</sup>, Dahabada H. J. Lopes<sup>1</sup>, and Gal Bitan<sup>1,2,3,\*</sup>

Department of Neurology, David Geffen School of Medicine<sup>1</sup>, Brain Research Institute<sup>2</sup>, and Molecular Biology Institute<sup>3</sup>, University of California at Los Angeles, Los Angeles, CA 90095

\*Address correspondence to: Gal Bitan, Department of Neurology, David Geffen School of Medicine, University of California at Los Angeles, Neuroscience Research Building 1, Room 451, 635 Charles E. Young Drive South, Los Angeles, CA 90095-7334, Phone: 310-206 2082, Fax: 310-206 1700, E-mail: gbitan@mednet.ucla.edu

## Supplementary Information



**Supplementary Figure 1. Cross-linking of HFIP-treated and untreated A $\beta$ 42.** Sixty  $\mu$ M A $\beta$ 42 prepared in phosphate buffer, pH 7.4, with or without pre-treatment with HFIP were cross-linked by PICUP, fractionated using SDS-PAGE and silver-stained. Duplicate samples are shown. Mobility of molecular weight protein markers is shown on the left.