

Supporting Information

Schjoldager et al. 10.1073/pnas.1203563109

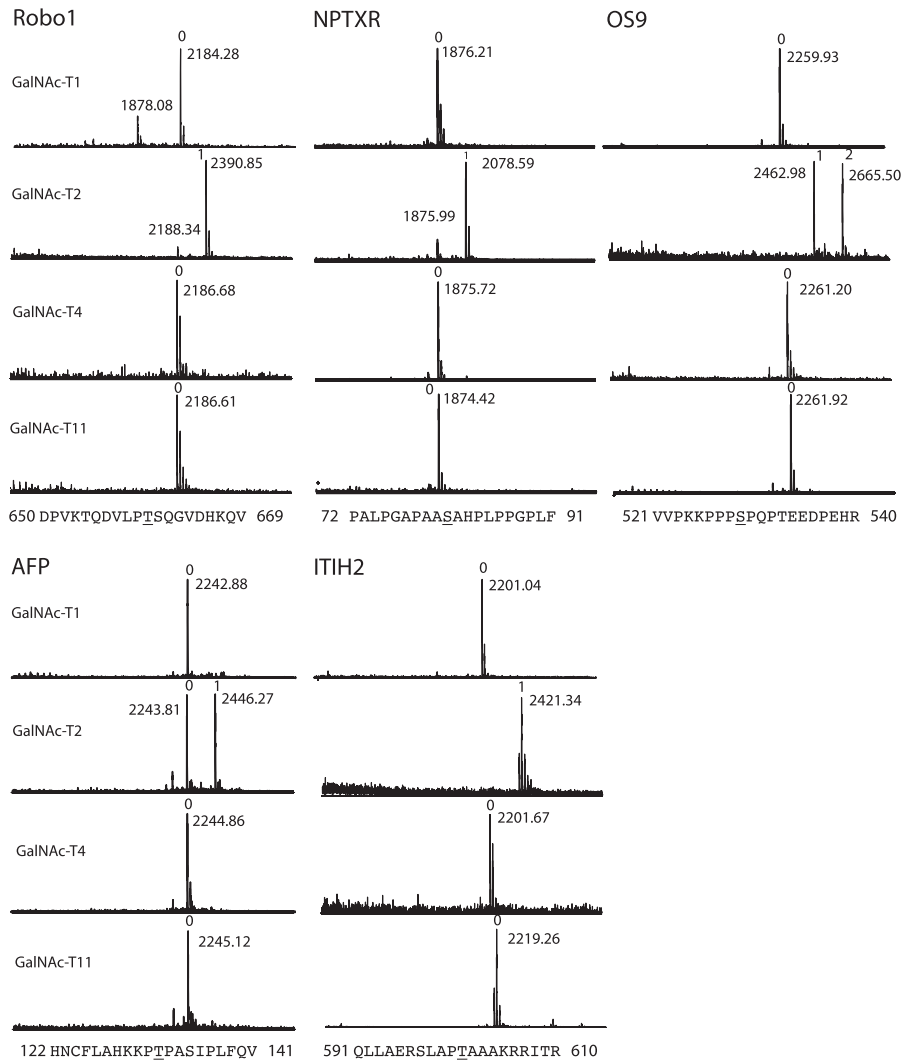


Fig. S1. MALDI-TOF time-course analysis of in vitro enzyme assays with selected GalNAc-T2 candidate peptide substrates (ROBO1, NPTXR, OS9, AFP, and ITIH2) by GalNAc-T1, -T2, -T4, and -T11. Synthetic peptides were designed to cover identified glycosylated Ser or Thr residues (underlined). Reactions were analyzed after a 16-h incubation. Masses of peptides and glycopeptides are indicated with the predicted number of incorporated GalNAc residues written above the peaks.

Other Supporting Information Files

[Table S1 \(DOCX\)](#)