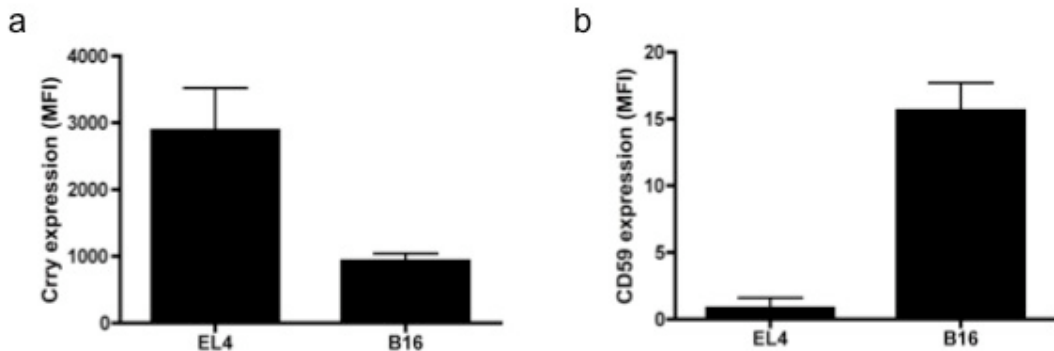
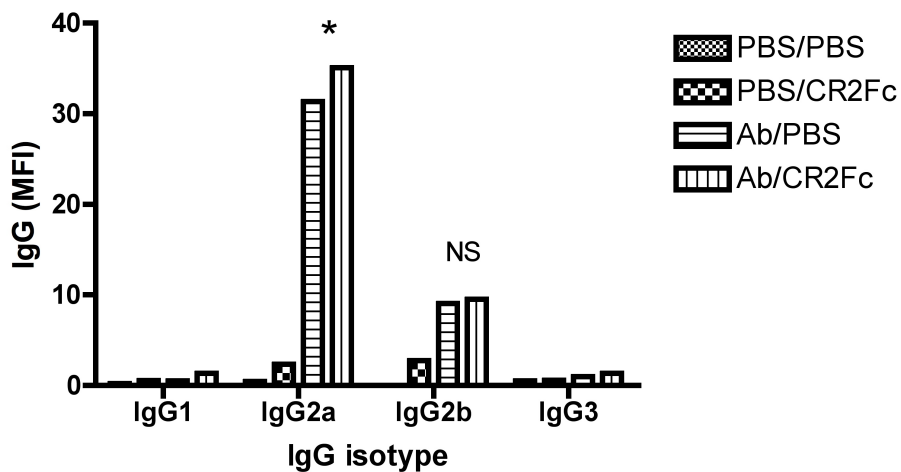


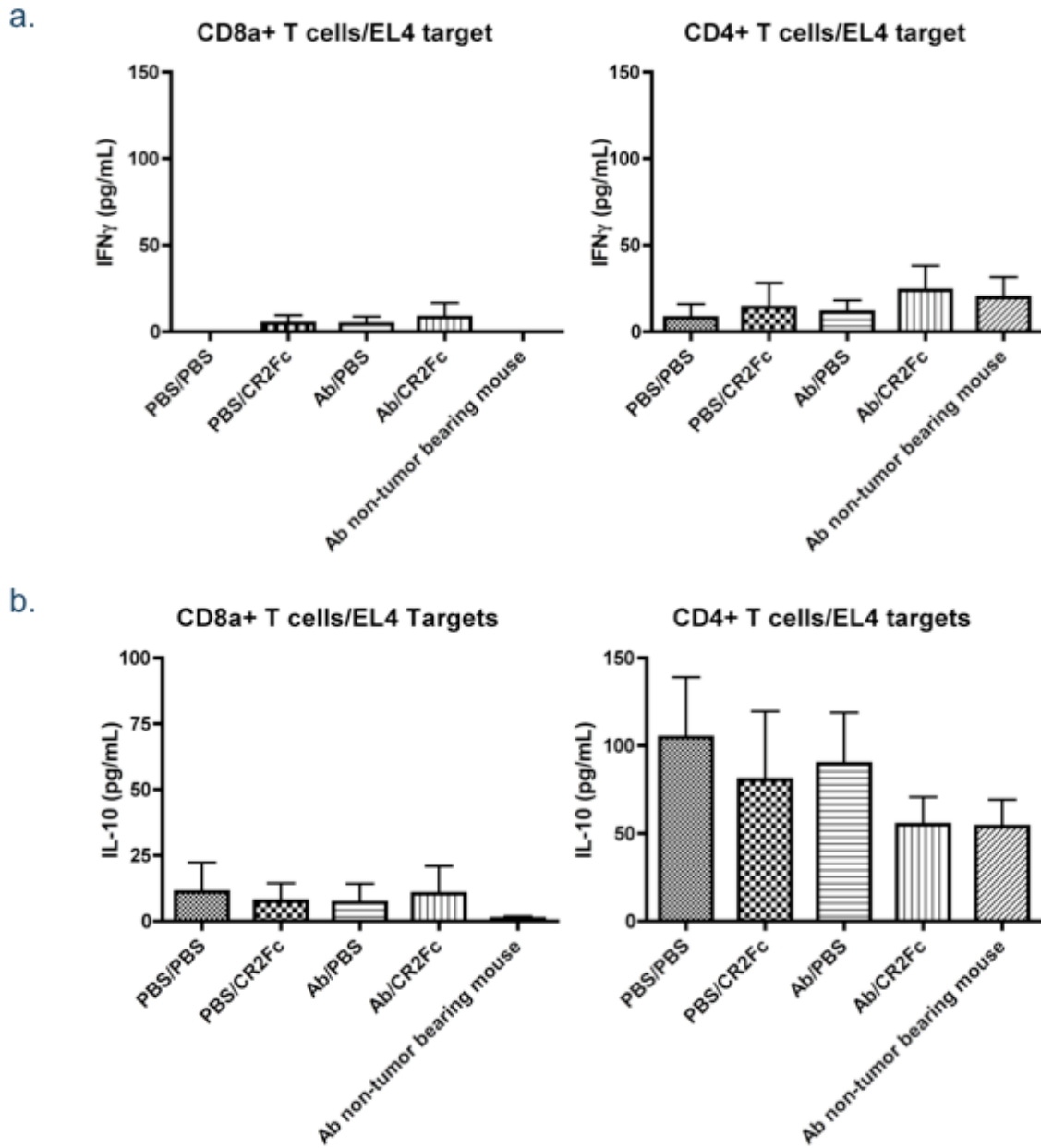
**Supplemental Fig 1. Schematic representation of CR2Fc and Western blot showing purified protein.** (a) The C3 binding domain of CR2 (SCR's 1-4) was linked to the complement activating Fc region of mouse IgG2a. (b) Analysis of CR2Fc by anti-Fc Western blot following SDS-PAGE under non-reducing conditions. Lanes represent increasing volume of supernatant from CR2Fc expressing cells. Calculated molecular weight 110 kD. Double bands are due to glycosylation, confirmed by glycosidase treatment (not shown), and as we have shown for other CR2-fusion proteins <sup>1</sup>.



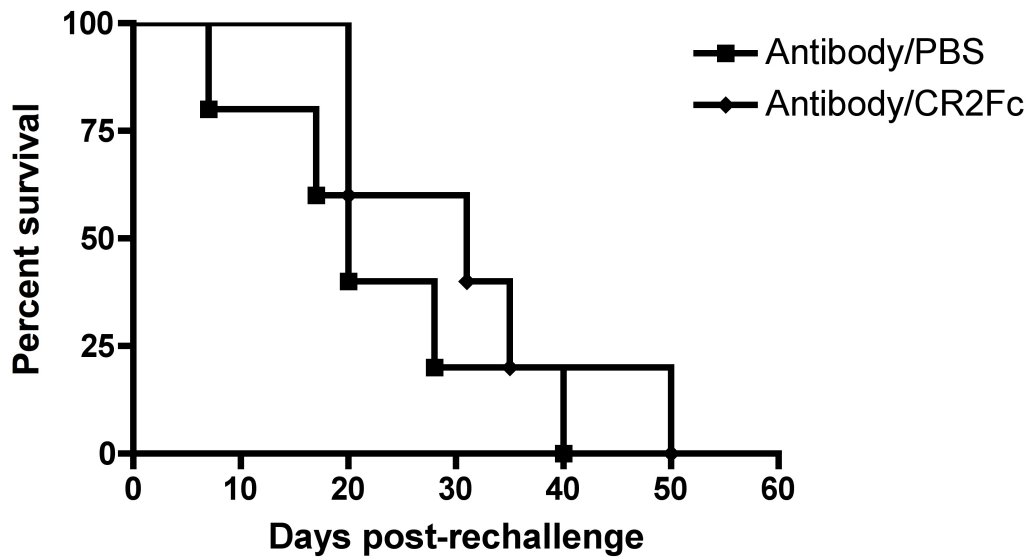
**Supplemental Fig 2. Expression of the complement inhibitors Crry and CD59 on EL4 and B16 cells.** The expression of the complement inhibitors Crry (a) and CD59 (b) were evaluated by flow cytometric analysis.



**Supplemental Fig 3. CR2Fc treatment does not induce an anti-EL4 IgG response.** IgG isotypes were measured in the serum at day 0 and on day 19 after tumor challenge by a flow cytometric based method (see methods). No significant differences were detected in IgG1, IgG2b and IgG3 between groups. Increased anti-EL4 IgG2a was seen in mAb and mAb+CR2Fc treated mice, which is the isotype of the treatment mAb.



**Supplemental Fig 4. Monoclonal antibody therapy with or without CR2Fc treatment does not induce an anti-EL4 T cell response.** CD4<sup>+</sup> or CD8a<sup>+</sup> splenocytes from mice challenged with EL4 and treated with mAb or mAb and CR2Fc were plated with EL4 cells as targets. Forty-eight hours later the level of IFN- $\gamma$  (a) or IL-10 (b) in the supernatant were analyzed by specific ELISA. Mean +/- SEM (n=7-10).



**Supplemental Fig 5. Monoclonal antibody and CR2F treatment does not induce a protective immune response in surviving EL4 mice following rechallenge.** Wildtype C57BL/6 mice were challenged with  $5 \times 10^4$  EL4 cells. Forty-eight hours later the mice were treated with  $25 \mu\text{g}$  14G2a, followed 6 hours later by  $50 \mu\text{g}$  CR2Fc (Antibody/CR2Fc) or PBS (Antibody/PBS). Surviving mice at day 35 were rechallenged with  $5 \times 10^4$  EL4 cells (day 0 post-rechallenge). (n=5)

1. Song H, He C, Knaak C, et al. Complement receptor 2-mediated targeting of complement inhibitors to sites of complement activation. *J Clin Invest.* 2003;111(12):1875-1885.