



Supplemental Material to:

Weihua Li, Yanhong Tai, Jie Zhou, Weiting Gu, Zhaofang Bai, Tao Zhou, Zhijiu Zhong, Peter A. McCue, Nianli Sang, Jun-Yuan Ji, Beihua Kong, Jie Jiang and Chenguang Wang

Repression of endometrial tumor growth by targeting SREBP1 and lipogenesis

2012; 11(12)

<http://dx.doi.org/10.4161/cc.20811>

<http://www.landesbioscience.com/journals/cc/article/20811>

Supplemental Materials:

Supplemental figures:

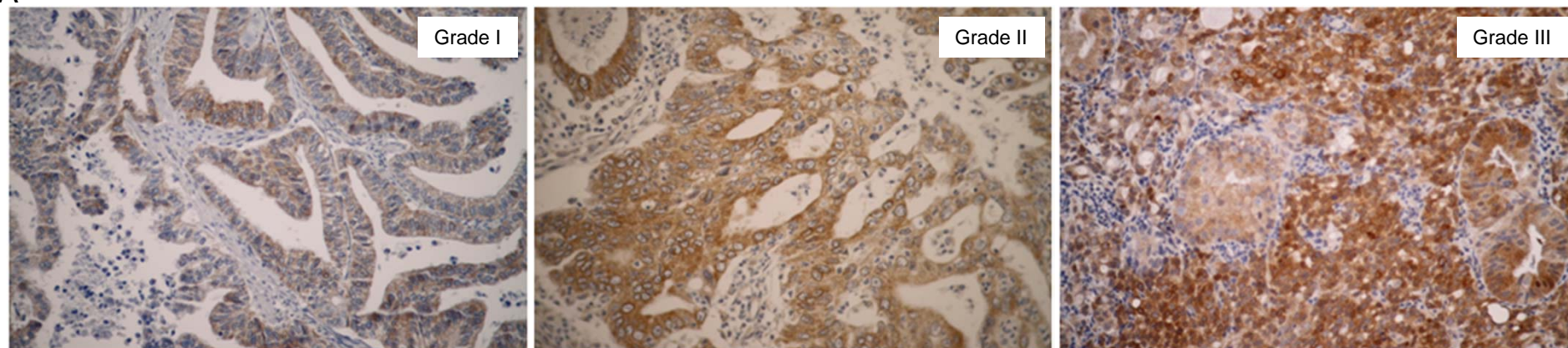
Figure S1. Increased SREBP1 expression during endometrial cancer progression. (A). IHC staining was conducted for SREBP1 protein levels on endometrial cancer specimens. (B).

Boxplot of IHC staining score for SREBP1 in whole cell, cytoplasm and nucleus in all specimens. Statistical analysis of SREBP1 expression was performed and comparison of SREBP1 protein expression was correlated to cancer cell differentiation.

Figure S2. Increased SREBP1 expression atypical hyperplasia. (A). IHC staining was conducted with anti-SREBP1 antibody on endometrial tissues derived from normal, hyperplasia without atypia and atypical hyperplasia. (B). Boxplot of IHC staining score for SREBP1 in whole cell, cytoplasm and nucleus in all specimens recruited to this study as indicated. Statistical analysis of SREBP1 expression was performed showing the p-value for the difference among the experimental groups.

FIGURE S1

A



B

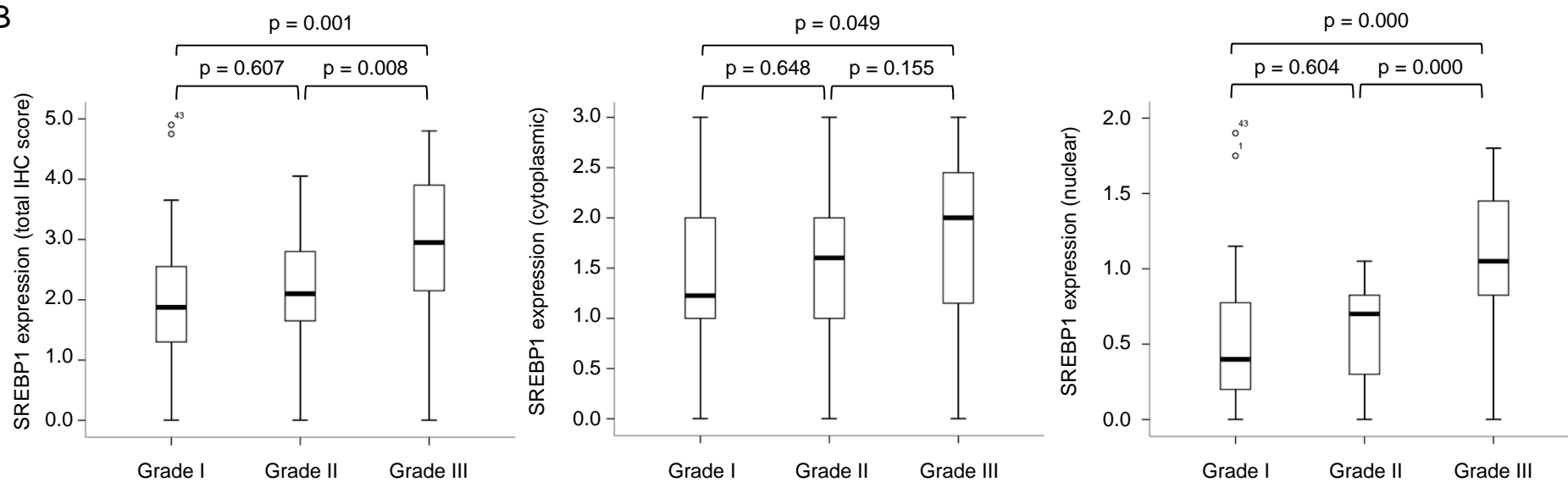
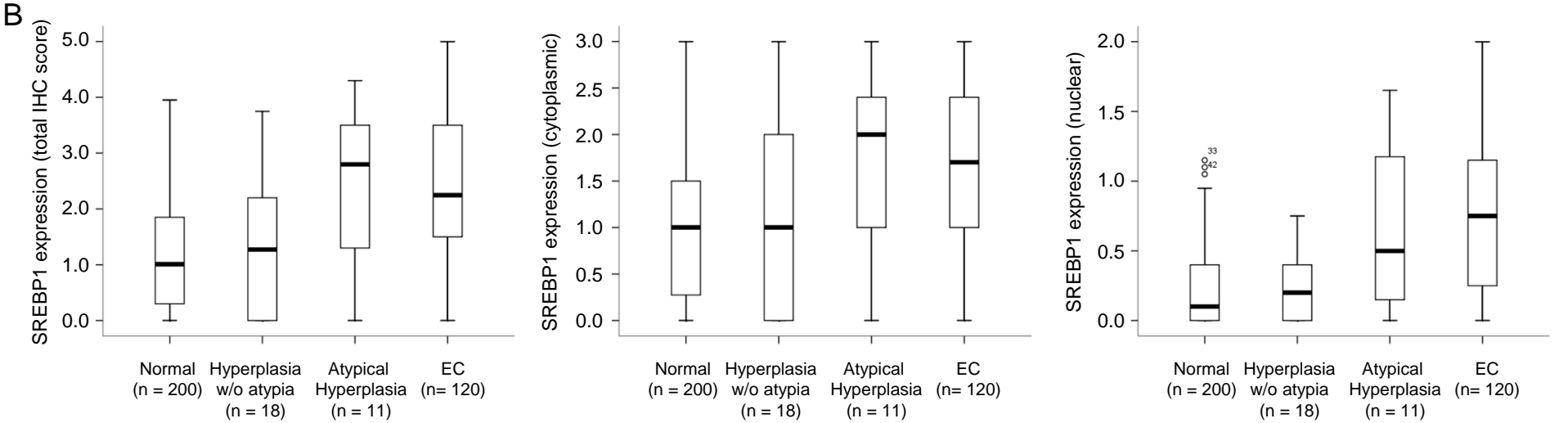
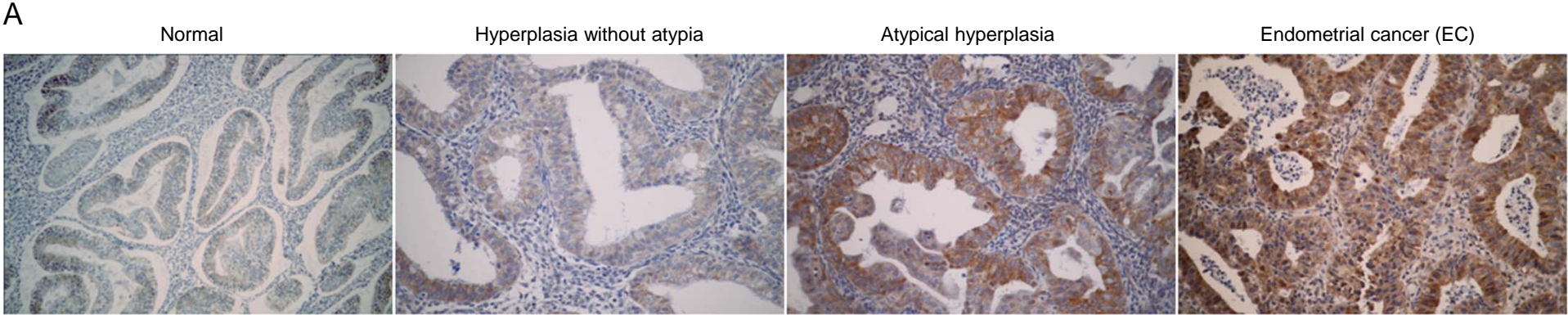


FIGURE S2



	Normal	Hyperplasia (w/o atypia)	Hyperplasia (with atypia)	EC
Normal	1			
Hyperplasia (w/o atypia)	0.594	1		
Hyperplasia (with atypia)	0.001	0.029	1	
EC	0.000	0.000	0.977	1

	Normal	Hyperplasia (w/o atypia)	Hyperplasia (with atypia)	EC
Normal	1			
Hyperplasia (w/o atypia)	0.419	1		
Hyperplasia (with atypia)	0.005	0.082	1	
EC	0.000	0.025	0.757	1

	Normal	Hyperplasia (w/o atypia)	Hyperplasia (with atypia)	EC
Normal	1			
Hyperplasia (w/o atypia)	0.995	1		
Hyperplasia (with atypia)	0.180	0.173	1	
EC	0.000	0.000	0.958	1