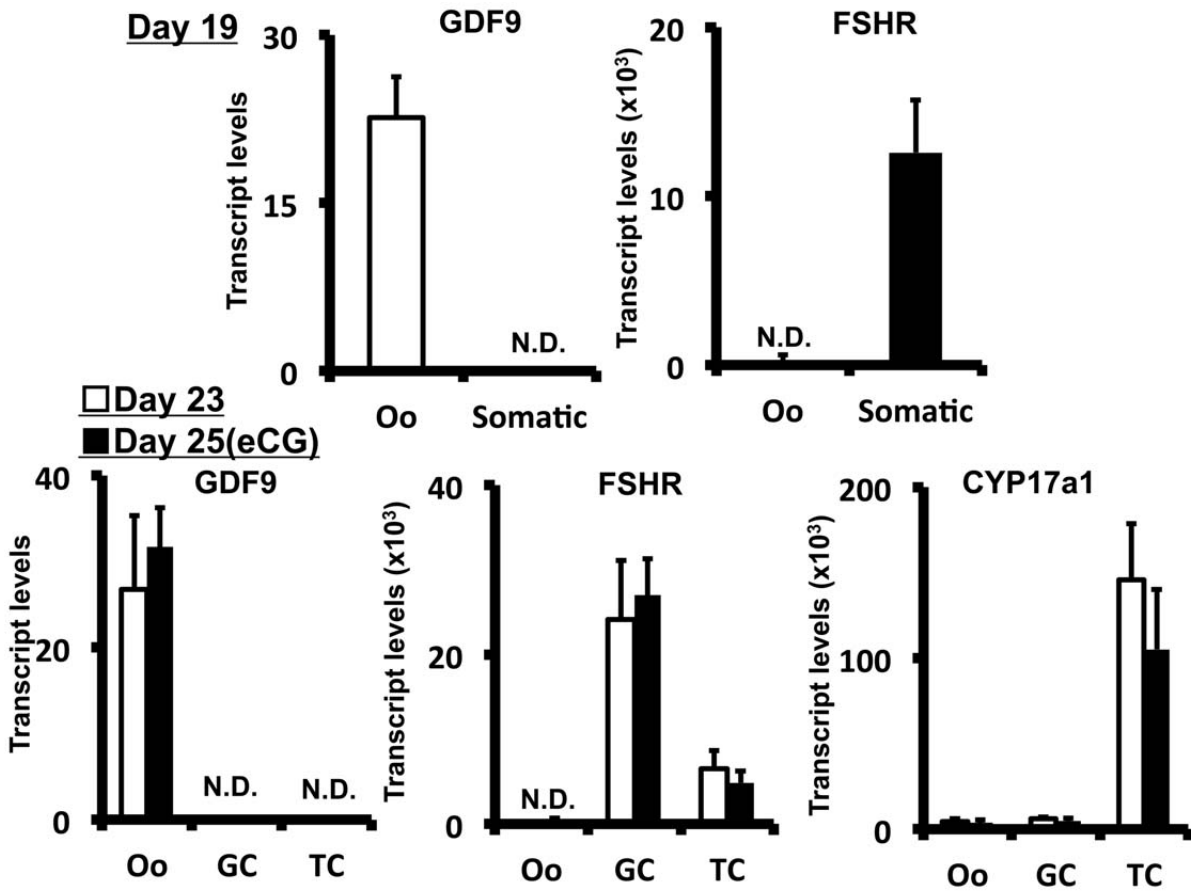


1 **SUPPLEMENTAL DATA**

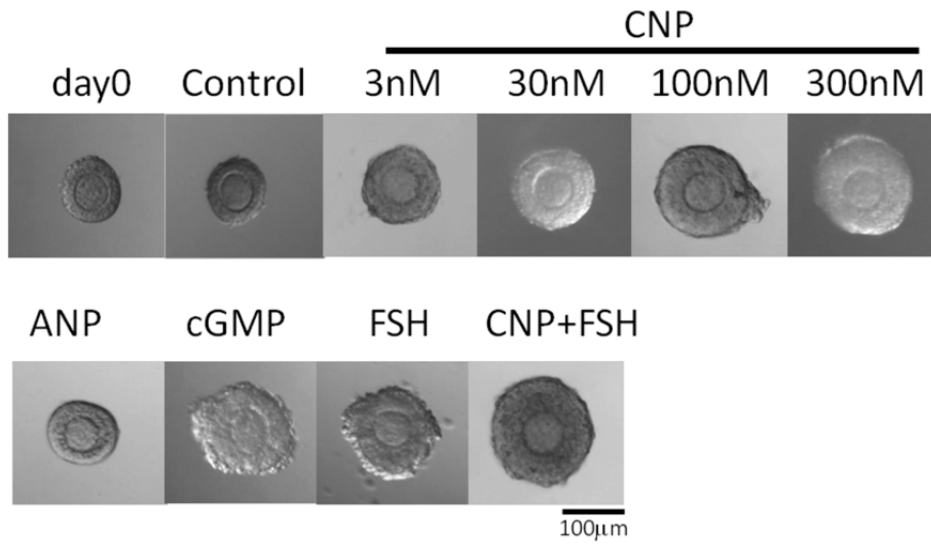
2 Supplemental Fig. 1 The purity of different cell types was confirmed using specific markers. GDF9 for  
3 oocyte, FSH receptor for granulosa cells, and CYP17a1 for theca cells. N. D.: not detectable, OC: oocyte;  
4 Somatic: somatic cells; GC: granulosa cells; TC: theca cells.



5

6

7 **Supplemental Fig. 2** Morphology of cultured preantral follicles treated with different hormones for 4  
8 days. Representative photographs of follicles at day 0 of culture or at 4 days after culture are shown.  
9 Control group received no treatment whereas other groups were treated with different doses (3-300 nM)  
10 of CNP, 100nM of ANP, 5mM of 8-bromo-cGMP (cGMP), FSH (25 ng/ml), or FSH plus 100nM of CNP.



11

12

13

14

15

16

17

**Supplementary Table 1: Primers used for RT-PCR**

Genes	Sequences of primer set (5'-3')	
	F; forward	R; reverse
GDF9	F R	CCAGAGGACGGAGTGTTTAGC TGAAGAGACTGCCAAGAGTGG
FSHR	F R	TCTAACAGGGTCTTCCTCTGC CTCAGTTCAATGGCGTTCC
CYP17a1	F R	TTCTGATCGACCCTTTCAAAGTG GGATCCGGACGTTAGATTCC
NPPC	F R	GGTCTGGGATGTTAGTGCAGCTA TAAAAGCCACATTGCGTTGGA
NPRB	F R	GCTGACCCGGCAAGTTCTGT ACAATACTCGGTGACAATGCAGAT
$\beta$ -actin	F R	GTATCCATGAAATAAGTGGTTACAGG GCAGTACATAATTTACACAGAAGCAAT
LH receptor	F R	GTATCCATGAAATAAGTGGTTACAGG GCAGTACATAATTTACACAGAAGCAAT
CYP11a	F R	CCAGAGGACGGAGTGTTTAGC TGAAGAGACTGCCAAGAGTGG
CYP19a1	F R	TCTAACAGGGTCTTCCTCTGC CTCAGTTCAATGGCGTTCC
StAR	F R	TTCTGATCGACCCTTTCAAAGTG GGATCCGGACGTTAGATTCC
Inhibin-a	F R	GGTCTGGGATGTTAGTGCAGCTA TAAAAGCCACATTGCGTTGGA
Progesterone receptor	F R	GCTGACCCGGCAAGTTCTGT ACAATACTCGGTGACAATGCAGAT
CREB	F R	CCAAACTAGCAGTGGGCAGT CCCATCCGTACCATTGTT
IGF1	F R	CAAAAGCAGCCCGCTCTA TCGATAGGGACGGGGACT
GATA6	F R	GGTCTCTACAGCAAGATGAATGG TGGCACAGGACAGTCCAAG
TPA	F R	GCCTGGGCAGACACAATTA ATCACATGGCACCAAGGTC
WT1	F R	CAGATGAACCTAGGAGCTACCTAAA TGCCCTTCTGTCCATTCA
CEBPa	F R	AAACAACGCAACGTGGAGA GCGGTCATTGTCACTGGTC